

LOC/DME I-TSL <b>111.1</b> Chan <b>48</b>	APP CRS <b>273°</b>	Rwy ldg <b>13000</b> TDZE <b>651</b> Apt Elev <b>680</b>
---	------------------------	--

**ILS RWY 28R (SA CAT I)**  
CHICAGO O'HARE INTL (ORD)

From VOGLR: RNAV 1-GPS required.  
Aircraft not GPS equipped - RADAR required for procedure entry.  
DME or RADAR required.

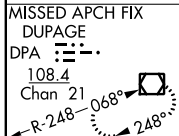
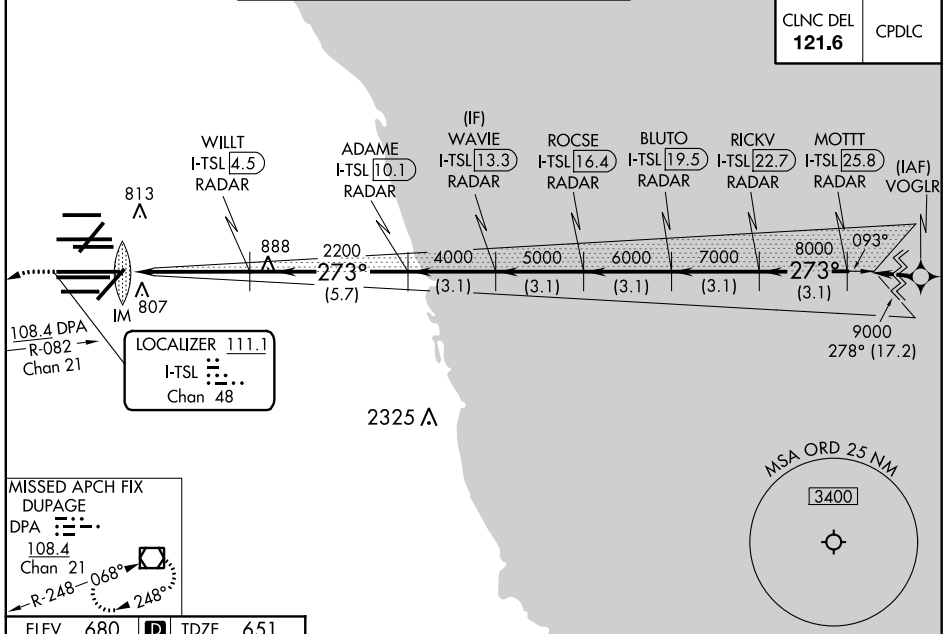


MISSED APPROACH: Climb to 1100 then climbing left turn to 4000 on heading 215° and DPA VOR/DME R-082 to DPA VOR/DME and hold.

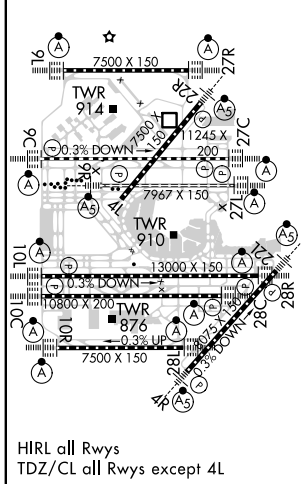
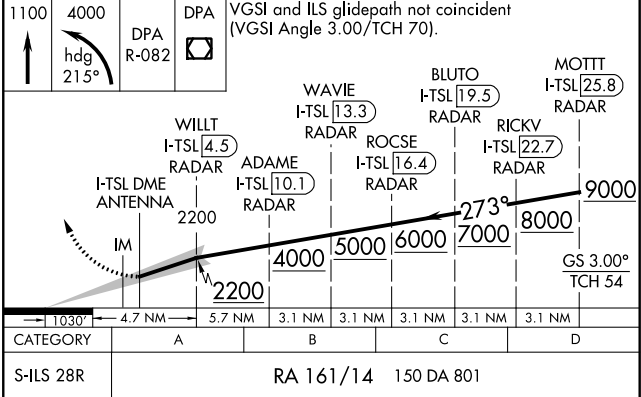
Simultaneous approach authorized. Requires specific OPSPEC, MSPEC, or LOA approval and use of HUD to DH.

D-ATIS <b>135.4</b> <b>282.225</b>	CHICAGO APP CON <b>119.0 292.125</b>	O'HARE TOWERS <b>128.15 348.0</b> (Rwy 9L/27R) <b>133.0 348.0</b> (10R/28L) <b>120.75 121.15 126.9 132.7 348.0</b> (CENTER)	GND CON <b>124.125</b> (TWR NORTH) <b>118.05</b> (TWR SOUTH) <b>226.675</b> (ALL TWRs)	(TWR CENTER) <b>121.75</b> (OBND) <b>121.9</b> (IBND)
--	---	---	---	---

CLNC DEL <b>121.6</b>	CPDLC
--------------------------	-------



ELEV <b>680</b>	<b>D</b>	TDZE <b>651</b>
-----------------	----------	-----------------



**SA CATEGORY I ILS - SPECIAL AIRCREW & AIRCRAFT CERTIFICATION REQUIRED**

EC-3, 09 SEP 2021 to 07 OCT 2021

EC-3, 09 SEP 2021 to 07 OCT 2021