

LOC I-FJU 110.1	APP CRS 045°	Rwy ldg TDZE Apt Elev	8075 661 680
---------------------------	------------------------	-----------------------------	---

ILS RWY 4R (SA CAT I & II)

CHICAGO O'HARE INTL (ORD)

RADAR required for procedure entry.

Simultaneous approach authorized.

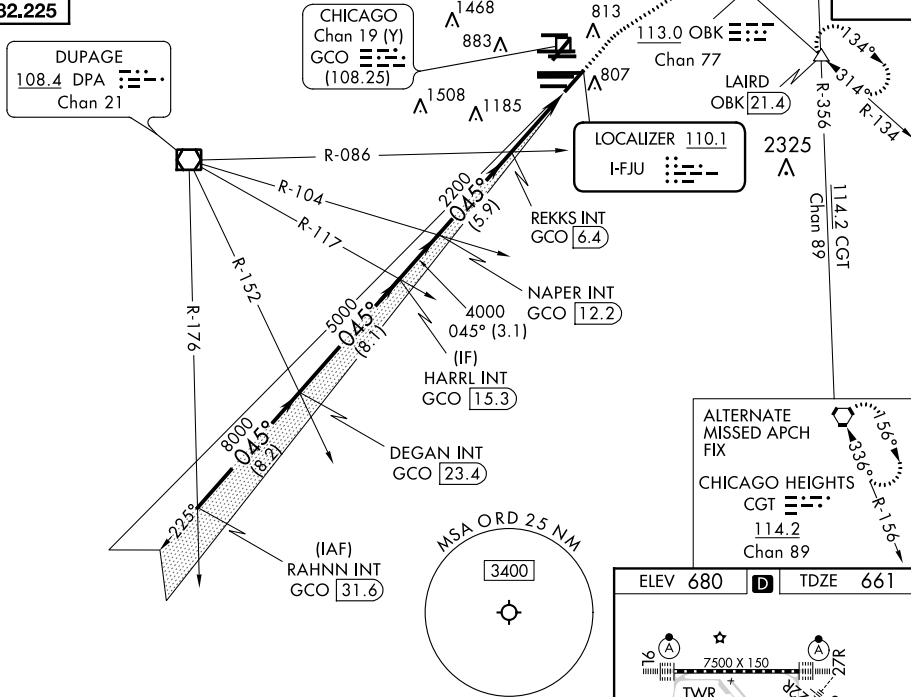
SA CAT I: Requires specific OPSPEC, MSPEC, or LOA approval and use of HUD to DH.
SA CAT II: Reduced lighting: Requires specific OPSPEC, MSPEC, or LOA approval and use of autoland or HUD to touchdown.

MALSR

MISSED APPROACH: Climb to 1200 then climbing right turn to 4000 on heading 060° and OBK VOR/DME R-134 to LAIRD INT/OBK 21.4 DME and hold.

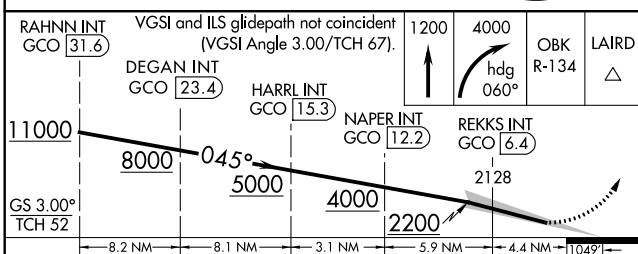
CHICAGO APP CON 119.0 292.125	O'HARE TOWERS 128.15 348.0 (Rwy 9L/27R) 120.75 121.15 126.9 132.7 348.0 (CENTER)	GND CON (TWR NORTH) 124.125 118.05 (TWR SOUTH) 226.675 (ALL TWRs)	(TWR CENTER) 121.75 (OBND) 121.9 (IBND)	CLNC DEL 121.6
---	--	--	---	--------------------------

D-ATIS
135.4
282.225



ALTERNATE MISSED APCH FIX

CHICAGO HEIGHTS
CGT 114.2
Chan 89



ELEV 680	D	TDZE 661
----------	----------	----------

Terminal area diagram showing various navigation aids and frequencies:

- TWR 914, TWR 910, TWR 876
- 1245 X 150, 13000 X 150, 7500 X 150, 10800 X 200
- 0.3% DOWN, 0.3% UP
- AS (Autoland) symbols

HIRL all Rwys
TDZ/CL all Rwys except 4L

CATEGORY	A	B	C	D
S-ILS 4R	SA CAT I	RA 160/16	150 DA 811	
S-ILS 4R	SA CAT II	RA 111/12	100 DA 761	

SA CATEGORY I & II ILS - SPECIAL AIRCREW & AIRCRAFT CERTIFICATION REQUIRED

EC-3, 09 SEP 2021 to 07 OCT 2021

EC-3, 09 SEP 2021 to 07 OCT 2021