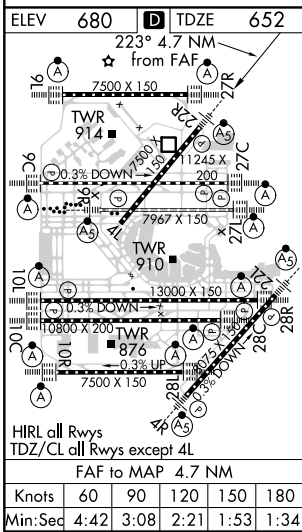
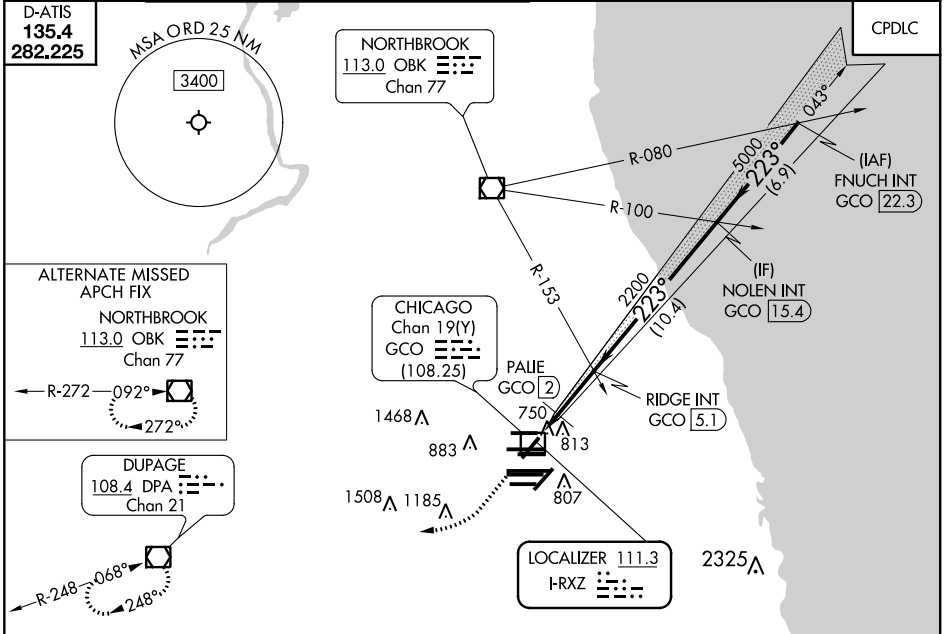


LOC I-RXZ 111.3	APP CRS 223°	Rwy ldg TDZE 7300 652	Apt Elev 680
---------------------------	------------------------	-------------------------------------------	------------------------

ILS or LOC RWY 22R

CHICAGO O'HARE INTL (ORD)

RADAR required for procedure entry.		MALSR	MISSED APPROACH: Climb to 1300 then climbing right turn to 4000 direct DPA VOR/DME and hold.		
Simultaneous approach authorized. DME from GCO DME.			CHICAGO APP CON 119.0 292.125	O'HARE TOWERS 128.15 348.0 (Rwy 9L/27R) 133.0 348.0 (10R/28L) 132.7 348.0 (CENTER) GND CON (TWR NORTH) 124.125 (TWR SOUTH) 118.05 (ALL TWRs) 226.675 (TWR CENTER) 121.75 (OBND) 121.9 (IBND)	CLNC DEL 121.6



ELEV 680	TDZE 652	223° 4.7 NM from FAF	1300	4000	DPA	VGSI and ILS glidepath not coincident (VGSI Angle 3.00/TCH 49).	FNUCH INT GCO 22.3
			0.8 NM	0.8	3.1 NM	10.4 NM	6.9 NM
			A		B	C	D
CATEGORY		S-ILS 22R		852/18		200 (200-½)	
		S-LOC 22R		1220/24 568 (600-½)		1220-1¼ 568 (600-1¼)	
CIRCLING		1220-1 540 (600-1)		1220-1½ 540 (600-1½)		1460-2½ 780 (800-2½)	
PALIE FIX MINIMUMS							
S-LOC 22R		980/24 328 (300-½)		980/26 328 (300-½)			
CIRCLING		1220-1 540 (600-1)		1220-1½ 540 (600-1½)		1460-2½ 780 (800-2½)	

EC-3, 09 SEP 2021 to 07 OCT 2021

EC-3, 09 SEP 2021 to 07 OCT 2021