

CHICAGO, ILLINOIS

AL-166 (FAA)

RNAV (GPS) PRM RWY 10C (CLOSE PARALLEL)

CHICAGO O'HARE INTL (ORD)

WAAS CH 81934 W10B	APP CRS 093°	Rwy Idg 10540 TDZE 669 Apt Elev 680
--	------------------------	--

ALSF-2



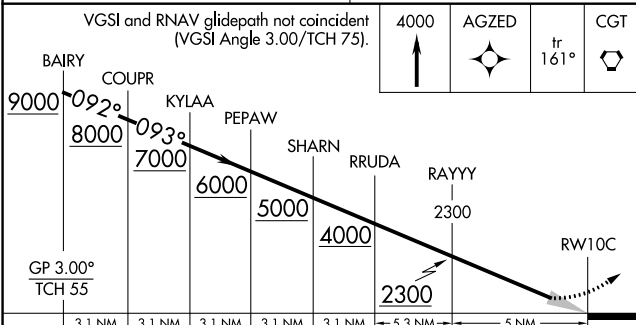
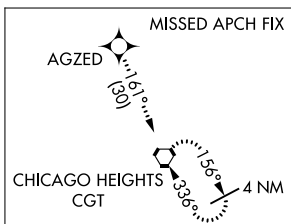
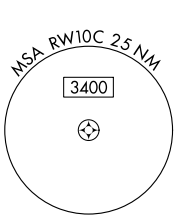
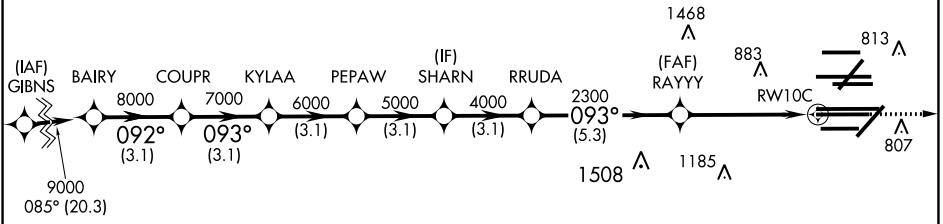
MISSED APPROACH: Climb to 4000 direct AGZED and on track 161° to CGT VORTAC and hold.

DME/DME RNP-0.3 NA. Simultaneous approach authorized. Dual VHF comm required. See additional requirements on AAUP. For uncompensated Baro-VNAV systems, LNAV/VNAV NA below -1°C (-2°F) or above 54°C (130°F). Use of FD or AP providing RNAV track guidance required during simultaneous operations.

D-ATIS 135.4 282.225	CHICAGO APP CON 119.0 292.125	O'HARE TOWERS 128.15 348.0 (Rwy 9L/27R) 133.0 348.0 (10R/28L) 120.75 121.15 126.9 132.7 348.0 (CENTER) PRM 119.625	GND CON (TWR NORTH) 124.125 (TWR SOUTH) 118.05 (ALL TWRs) 226.675	(TWR CENTER) 121.75 (CBND) 121.9 (IBND)
--	--	---	--	--

CLNC DEL 121.6	CPDLC
--------------------------	-------

RADAR REQUIRED



GP 3.00° TCH 55	3.1 NM	3.1 NM	3.1 NM	3.1 NM	3.1 NM	5.3 NM	5 NM
CATEGORY	A		B		C	D	
LPV DA	869/18		200 (200-1/2)				
LNAV/VNAV DA	1056/40		387 (400-3/4)				

ELEV 680 TDZE 669

HIRL all Rwy's
TDZ/CL all Rwy's except 4L

EC-3, 09 SEP 2021 to 07 OCT 2021

EC-3, 09 SEP 2021 to 07 OCT 2021

CHICAGO, ILLINOIS
Orig-A 17AUG17

41°59'N-87°54'W

CHICAGO O'HARE INTL (ORD)

RNAV (GPS) PRM RWY 10C (CLOSE PARALLEL)