

WAAS CH 42513 W29A	APP CRS 292°	Rwy Idg 5126 TDZE 1496 Apt Elev 1497
--	------------------------	---

RNAV (GPS) RWY 29

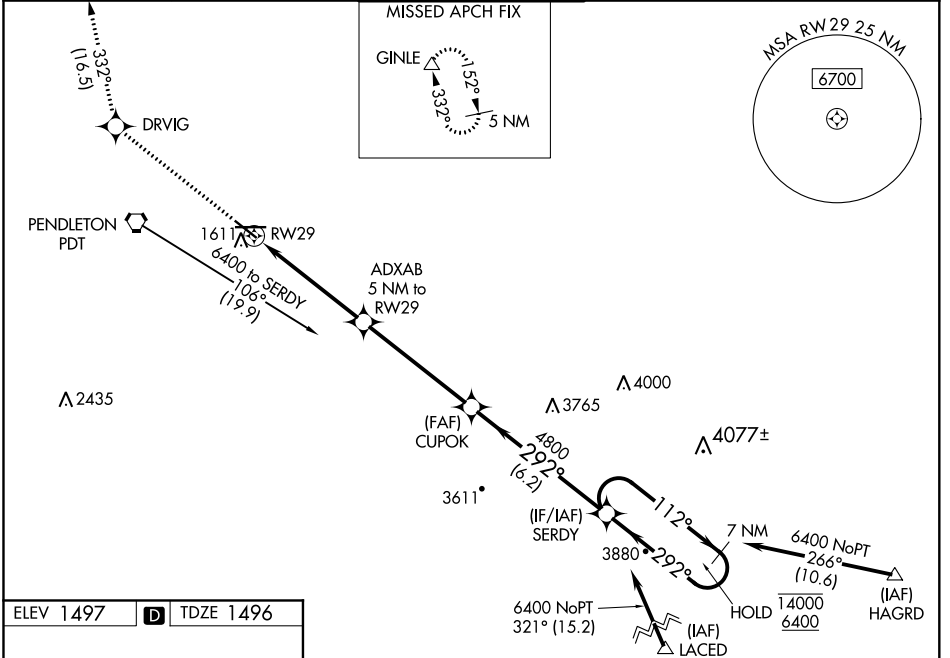
EASTERN OREGON RGNL AT PENDLETON (PDT)

RNP APCH.

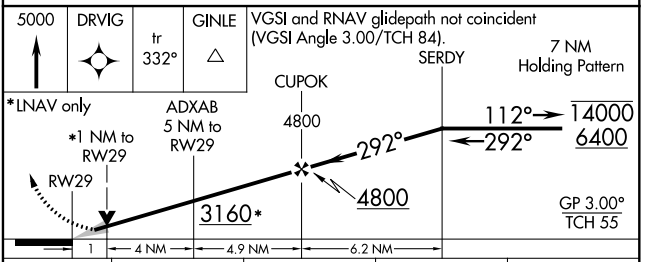
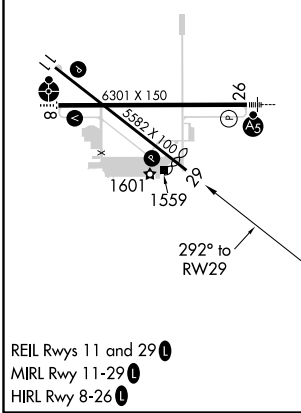
⚠ Baro-VNAV and VDP NA when using Walla Walla altimeter setting. For uncompensated Baro-VNAV systems, LNAV/VNAV NA below -17°C or above 54°C. When local altimeter setting not received, use Walla Walla altimeter setting and increase LPV DA to 1869 feet, LNAV/VNAV DA to 1923 feet, and all MDAs 140 feet; increase LNAV/VNAV all Cats visibility ¼ SM, LNAV Cats C/D visibility ¼ SM and Circling Cat C visibility ½ SM.

MISSED APPROACH: Climb to 5000 direct DRVIG and on track 332° to GINLE and hold.

ASOS 118.325	CHINOOK APP CON* 133.15 379.15	PENDLETON TOWER* 119.7 (CTAF) 257.8	GND CON 121.9 257.8	UNICOM 122.95
------------------------	--	---	-------------------------------	-------------------------



ELEV 1497	D	TDZE 1496
-----------	----------	-----------



CATEGORY	A	B	C	D
LPV DA	1747-1 251 (300-1)			
LNAV/VNAV DA	1801-1 305 (400-1)			
LNAV MDA	1880-1	384 (400-1)	1880-1½	384 (400-1½)
C CIRCLING	1920-1 423 (500-1)	1960-1 463 (500-1)	1980-1½ 483 (500-1½)	2200-2½ 703 (800-2½)

NW-1, 09 SEP 2021 to 07 OCT 2021

NW-1, 09 SEP 2021 to 07 OCT 2021