

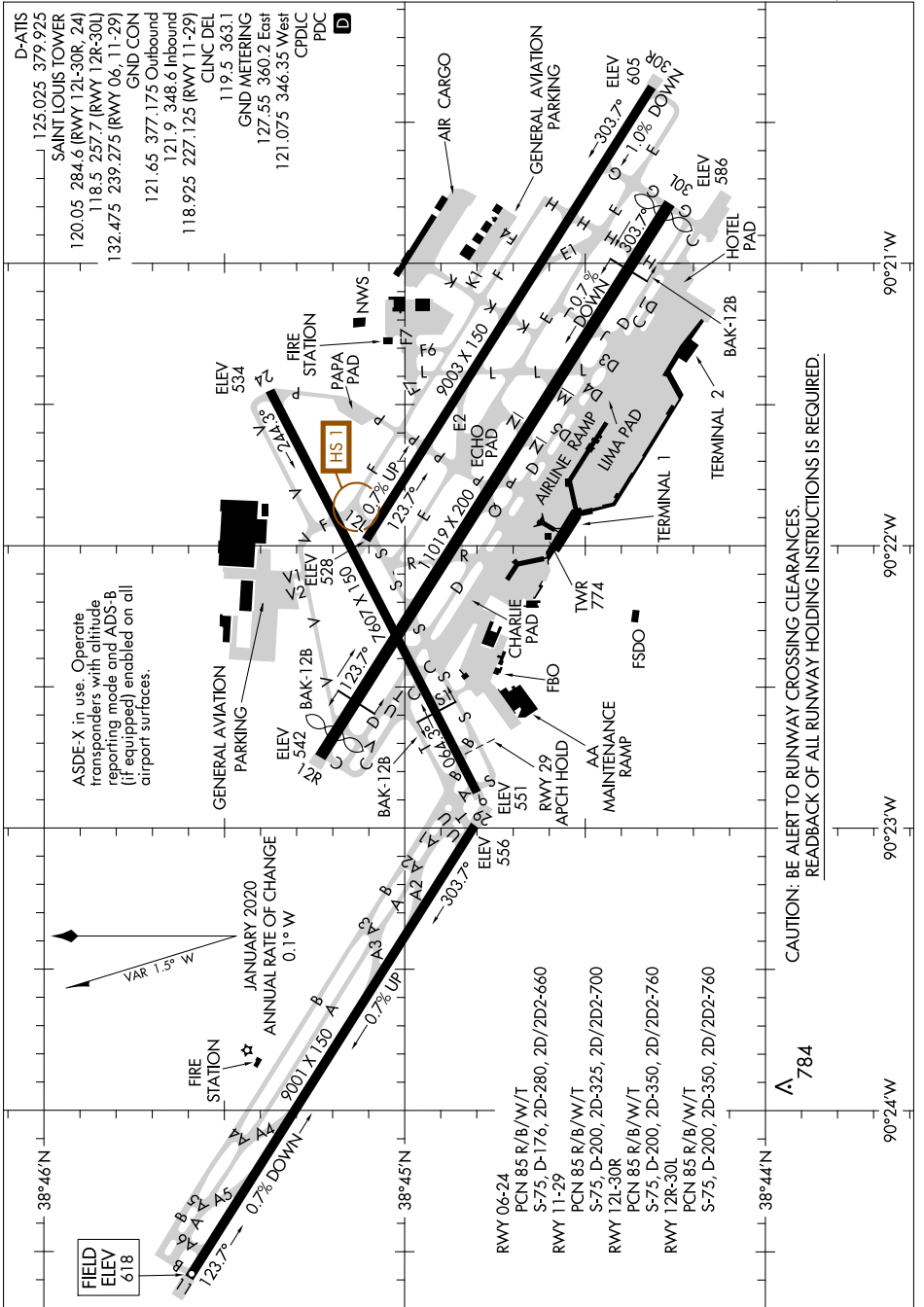
# AIRPORT DIAGRAM

AL-360 (FAA)

ST LOUIS LAMBERT INTL (STL)

ST LOUIS, MISSOURI

NC-3, 09 SEP 2021 to 07 OCT 2021



FIELD ELEV 618

ASDE-X in use. Operate transponders with altitude reporting mode and ADS-B (if equipped) enabled on all airport surfaces.

VAR 1.5° W  
ANNUAL RATE OF CHANGE 0.1° W  
JANUARY 2020

CAUTION: BE ALERT TO RUNWAY CROSSING CLEARANCES.  
READBACK OF ALL RUNWAY HOLDING INSTRUCTIONS IS REQUIRED.

A 784

# AIRPORT DIAGRAM

ST LOUIS, MISSOURI

ST LOUIS LAMBERT INTL (STL)

NC-3, 09 SEP 2021 to 07 OCT 2021