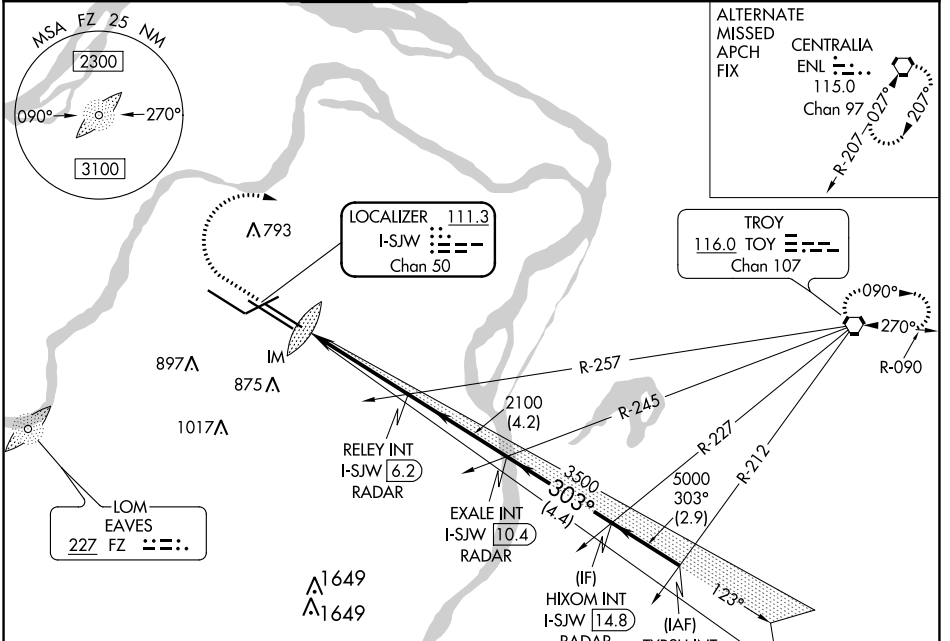


| | | | |
|---|------------------------|-----------------------------|---|
| LOC/DME I-SJW 111.3 Chan 50 | APP CRS 303° | Rwy ldg TDZE Apt Elev | 9003 605 618 |
|---|------------------------|-----------------------------|---|

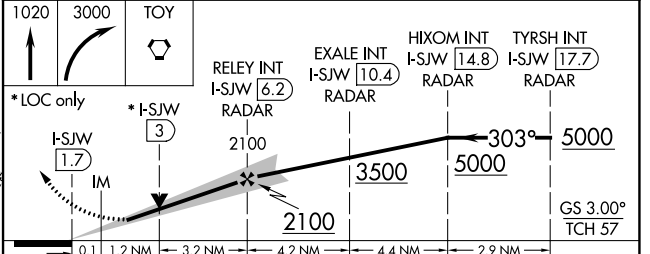
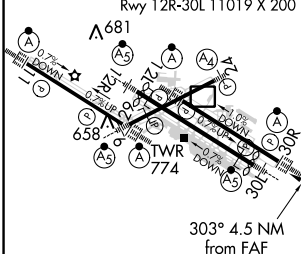
ILS or LOC RWY 30R

ST LOUIS LAMBERT INTL (STL)

| | | | | | |
|---|---|---|--|---|-------|
| RADAR required for procedure entry. | | ALSF-2 | | MISSED APPROACH: Climb to 1020 then climbing right turn to 3000 direct TOY VORTAC and hold. | |
| For inop ALS, increase S-ILS 30R Cat E visibility to RVR 4000 and S-LOC 30R Cat C/D/E visibility to 1 3/8 SM. Simultaneous approach authorized with Rwy 29. Simultaneous approach authorized with Rwy 30L requires use of vertical guidance; maintain last assigned altitude until established on glideslope. | | GND CON 121.9 348.6 (Inbound) 121.65 377.175 (Outbound) 118.925 227.125 (Rwy 11/29) | | CLNC DEL 119.5 363.1 | |
| D-ATIS 125.025 379.925 | ST. LOUIS APP CON 132.125 360.6 | ST. LOUIS TOWER 120.05 284.6 | | | CPDLC |



| | | |
|--|---|----------|
| ELEV 618 | D | TDZE 605 |
| Rwy 6-24 7607 X 150 Rwy 11-29 9001 X 150 Rwy 12L-30R 9003 X 150 Rwy 12R-30L 11019 X 200 | | |



| | | | | | |
|-----------|-----------------------|---|---------------------|---|---|
| CATEGORY | A | B | C | D | E |
| S-ILS 30R | 805/18 200 (200-1/2) | | | | |
| S-LOC 30R | 1080/24 475 (500-1/2) | | 1080/50 475 (500-1) | | |

NC-3, 09 SEP 2021 to 07 OCT 2021

NC-3, 09 SEP 2021 to 07 OCT 2021