

LOC/DME I-JAK 110.3 Chan 40	APP CRS 064°	Rwy Idg TDZE Apt Elev	7352 551 618
------------------------------------------	------------------------	-----------------------------	-----------------------------------------

ILS or LOC RWY 6

ST LOUIS LAMBERT INTL (STL)

DME or RADAR required. DME or RADAR required for procedure entry.



MISSED APPROACH: Climb to 2200 then climbing left turn to 3000 direct STL VORTAC and hold, continue climb-in-hold to 3000.

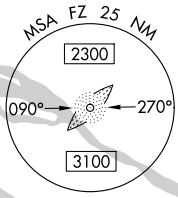
For inop ALS, increase S-ILS 6 Cat E visibility to RVR 4000 and S-LOC 6 Cat C/D/E visibility to 1 1/2 SM.

D-ATIS 125.025 379.925	ST. LOUIS APP CON 132.125 360.6	ST. LOUIS TOWER 132.475 239.275	GND CON 121.9 348.6 (Inbound) 121.65 377.175 (Outbound) 118.925 227.125 (Rwy 11/29)	CLNC DEL 119.5 363.1	CPDLC
--------------------------------------------	-------------------------------------------	-------------------------------------------	-------------------------------------------------------------------------------------------------------------------	--------------------------------	-------

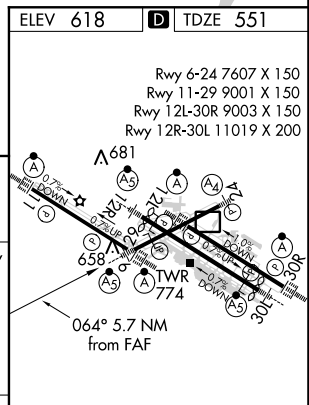
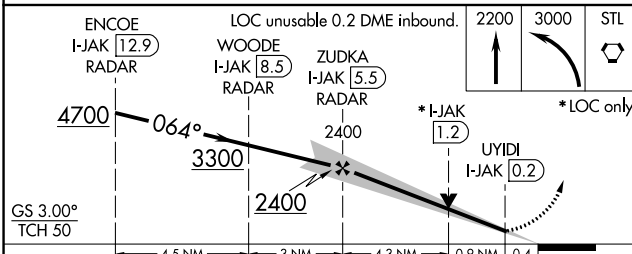
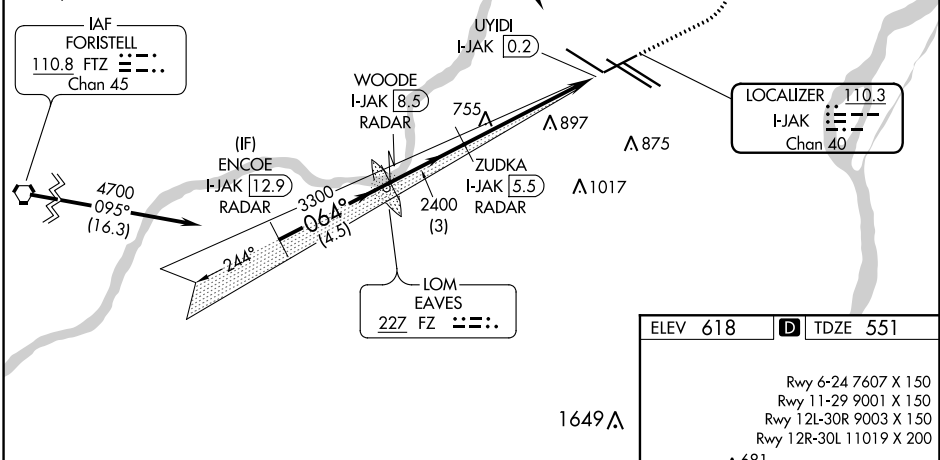
ALTERNATE MISSED APCH FIX

090°
270°
R-090

TROY
TOY
116.0
Chan 107



Procedure NA for arrival on FTZ VORTAC airway radials 082 CW 095.



CATEGORY	A	B	C	D	E
S-ILS 6	751/24 200 (200-1/2)				
S-LOC 6	1020/24	469 (500-1/2)	1020/50		469 (500-1)

HIRL all Rwy's					
TDZ/CL Rwy's 11, 12L, 12R, 29, and 30R					
FAF to MAP 5.3 NM					
Knots	60	90	120	150	180
Min:Sec	5:18	3:32	2:39	2:07	1:46

NC-3, 09 SEP 2021 to 07 OCT 2021

NC-3, 09 SEP 2021 to 07 OCT 2021