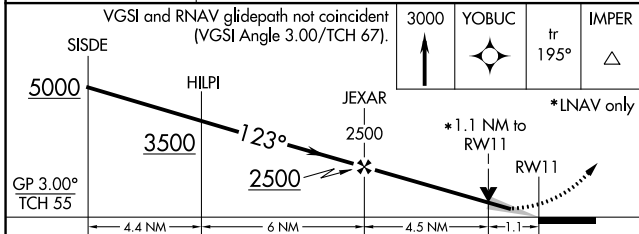
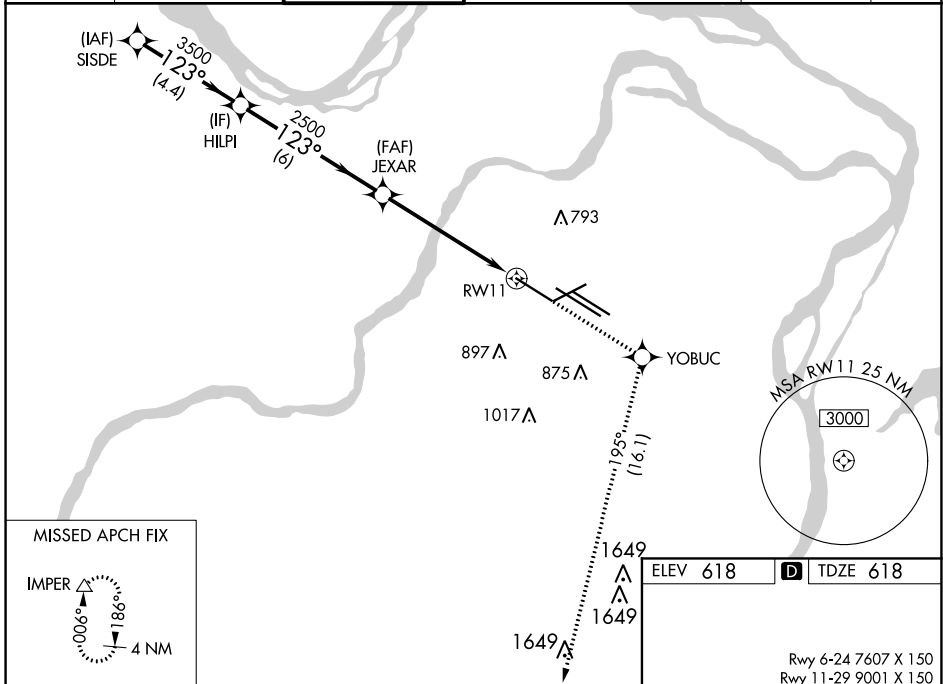


WAAS CH 82699 W11A	APP CRS 123°	Rwy Idg TDZE Apt Elev	9001 618 618
----------------------------------------	------------------------	-----------------------------	-----------------------------------------

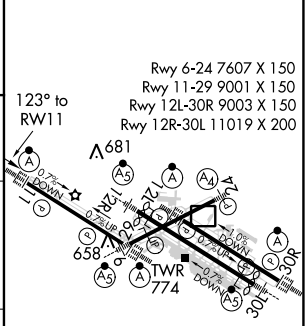
RNAV (GPS) Y RWY 11

ST LOUIS LAMBERT INTL (STL)

RNP APCH.		<p>Simultaneous approach authorized. Use of FD or AP required during simultaneous operations. LNAV procedure NA during simultaneous operations. For uncompensated Baro-VNAV systems, LNAV/VNAV NA below -16°C or above 54°C. For inop ALS, increase LPV Cat E visibility to RVR 4000 and LNAV Cat E visibility to 1¼ SM.</p>		<p>ALSF-2</p>		<p>MISSED APPROACH: Climb to 3000 direct YOBC and on track 195° to IMPER and hold.</p>	
D-ATIS 125,025 379,925	ST. LOUIS APP CON 132.125 360.6	ST. LOUIS TOWER 132.475 239,275	<p>GND CON</p> <p>121.9 348.6 (Inbound) 121.65 377.175 (Outbound) 118.925 227.125 (Rwy 11/29)</p>		CLNC DEL 119.5 363.1	CPDLC	



ELEV 618	D TDZE 618
----------	-------------------



CATEGORY	A	B	C	D	E
LPV DA		868/18	250 (300-½)		
LNAV/VNAV DA		960/40	342 (400-¾)		
LNAV MDA	1040/24	422 (500-½)	1040/40 422 (500-¾)	1040/50	422 (500-1)

HIRL all Rwys
TDZ/CL Rws 11, 12L, 12R, 29, and 30R

NC-3, 09 SEP 2021 to 07 OCT 2021

NC-3, 09 SEP 2021 to 07 OCT 2021