

WAAS CH 42500 W29A	APP CRS 303°	Rwy Idg TDZE Apt Elev	9001 580 618
--	------------------------	-----------------------------	---

RNAV (GPS) Y RWY 29

ST LOUIS LAMBERT INTL (STL)

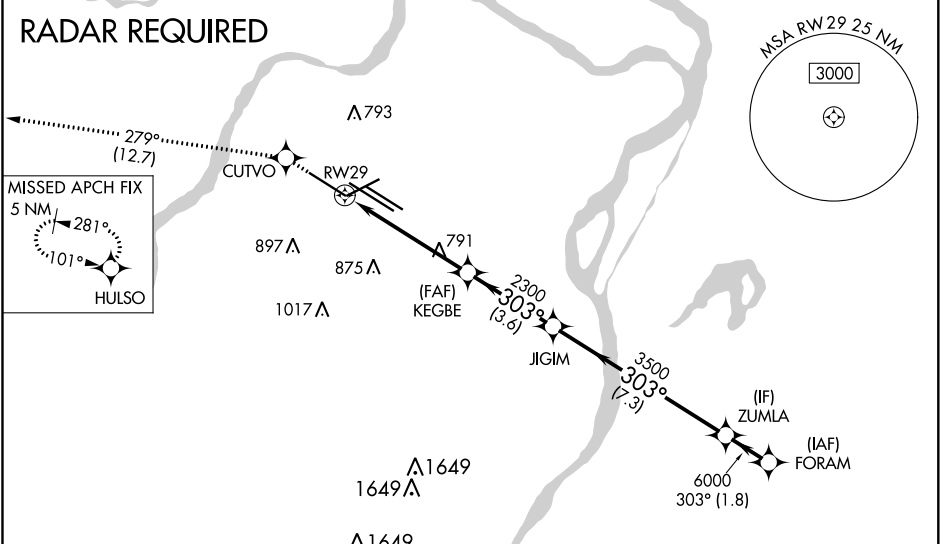
▼ For uncompensated Baro-VNAV systems, LNAV/VNAV NA below -16°C (4°F) or above 54°C (130°F). Rwy 29 helicopter visibility reduction below ¾ SM NA. Simultaneous approach authorized with Rwy 30R/L. LNAV procedure NA during simultaneous operations. Use of FD or AP providing RNAV track guidance required during simultaneous operations. DME/DME RNP-0.3 NA. For inop ALS, increase LPV all Cats visibility to RVR 6000, increase LNAV/VNAV Cat E visibility to 1¾, increase LNAV Cat A and B visibility to 1, Cat E visibility to 1¾.

ALSF-2

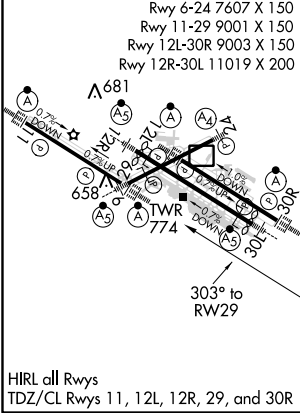


MISSED APPROACH:
Climb to 3000 direct CUTVO and on track 279° to HULSO and hold.

D-ATIS 125.025 379.925	ST. LOUIS APP CON 132.125 360.6	ST. LOUIS TOWER 132.475 239.275	GND CON 121.9 348.6 (Inbound) 121.65 377.175 (Outbound) 118.925 227.125 (Rwy 11/29)	CLNC DEL 119.5 363.1	CPDLC
--	---	---	---	--------------------------------	-------



ELEV 618	D	TDZE 580
----------	----------	----------



3000	CUTVO	tr 279°	HULSO	VGSI and RNAV glidepath not coincident (VGSI Angle 3.00/TCH 73).	
			JIGIM	ZUMLA	FORAM
*LNAV only	*1.5 NM to RWY29		KEGBE 2300	3500	6000
					GP 3.00° TCH 56
	1.5	3.7 NM	3.6 NM	7.3 NM	1.8 NM
CATEGORY	A	B	C	D	E
LPV DA	943/40 363 (400-¾)				
LNAV/VNAV DA	1074/60 494 (500-1¼)				
LNAV MDA	1100/40	520 (500-¾)	1100/50	520 (500-1)	1100/60 520 (500-1¼)

NC-3, 09 SEP 2021 to 07 OCT 2021

NC-3, 09 SEP 2021 to 07 OCT 2021