

WAAS CH 73000 W30A	APP CRS 303°	Rwy Idg TDZE Apt Elev	9003 605 618
--	------------------------	-----------------------------	---

RNAV (GPS) Y RWY 30R

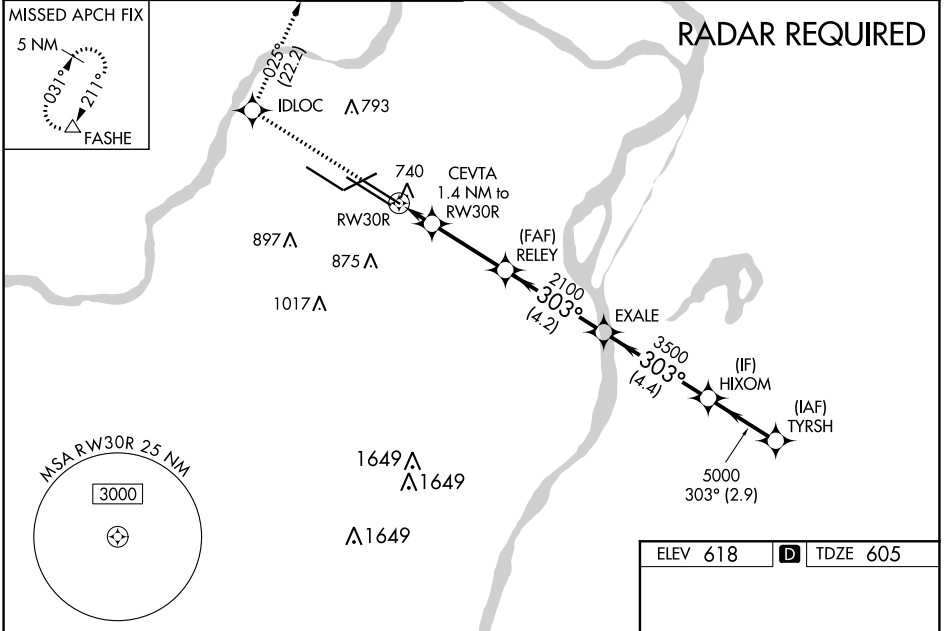
ST LOUIS LAMBERT INTL (STL)

For uncompensated Baro-VNAV systems, LNAV/VNAV NA below -15°C (5°F) or above 54°C (130°F). DME/DME RNP-0.3 NA. For inop ALS, increase LPV Cat E visibility to RVR 4000, LNAV/VNAV all Cats visibility to 4500, LNAV Cat D visibility to RVR 6000, and LNAV Cat E visibility to 1 1/8 SM. Simultaneous approach authorized with Rwy 29. LNAV procedure NA during simultaneous operations. Use of FD or AP required during simultaneous operations.

ALSF-2

MISSED APPROACH:
Climb to 3000 direct IDLOC and on track 025° to FASHE and hold.

D-ATIS 125.025 379.925	ST. LOUIS APP CON 132.125 360.6	ST. LOUIS TOWER 120.05 284.6	GND CON 121.9 348.6 (Inbound) 121.65 377.175 (Outbound) 118.925 227.125 (Rwy 11/29)	CLNC DEL 119.5 363.1	CPDLC
--	---	--	---	--------------------------------	-------



3000	IDLOC	tr 025°	FASHE					
*LNAV only				CEVTA 1.4 NM to RWY30R	RELEY 2100	EXALE 3500	HIXOM 5000	TYRSH 5000
				RWY30R	1100*	2100	3500	5000
				1.4	3.1 NM	4.2 NM	4.4 NM	2.9 NM
CATEGORY	A	B	C	D	E			
LPV DA	805/18		200 (200-1/2)					
LNAV/VNAV DA	901/24		296 (300-1/2)					
LNAV MDA	1000/24		395 (400-1/2)		1000/35		395 (400-5/8)	

ELEV 618 **D** TDZE 605

Rwy 6-24 7607 X 150
Rwy 11-29 9001 X 150
Rwy 12L-30R 9003 X 150
Rwy 12R-30L 11019 X 200

GP 3.00°
TCH 57

HIRL all Rwys
TDZ/CL Rwys 11, 12L, 12R, 29, and 30R

NC-3, 09 SEP 2021 to 07 OCT 2021

NC-3, 09 SEP 2021 to 07 OCT 2021