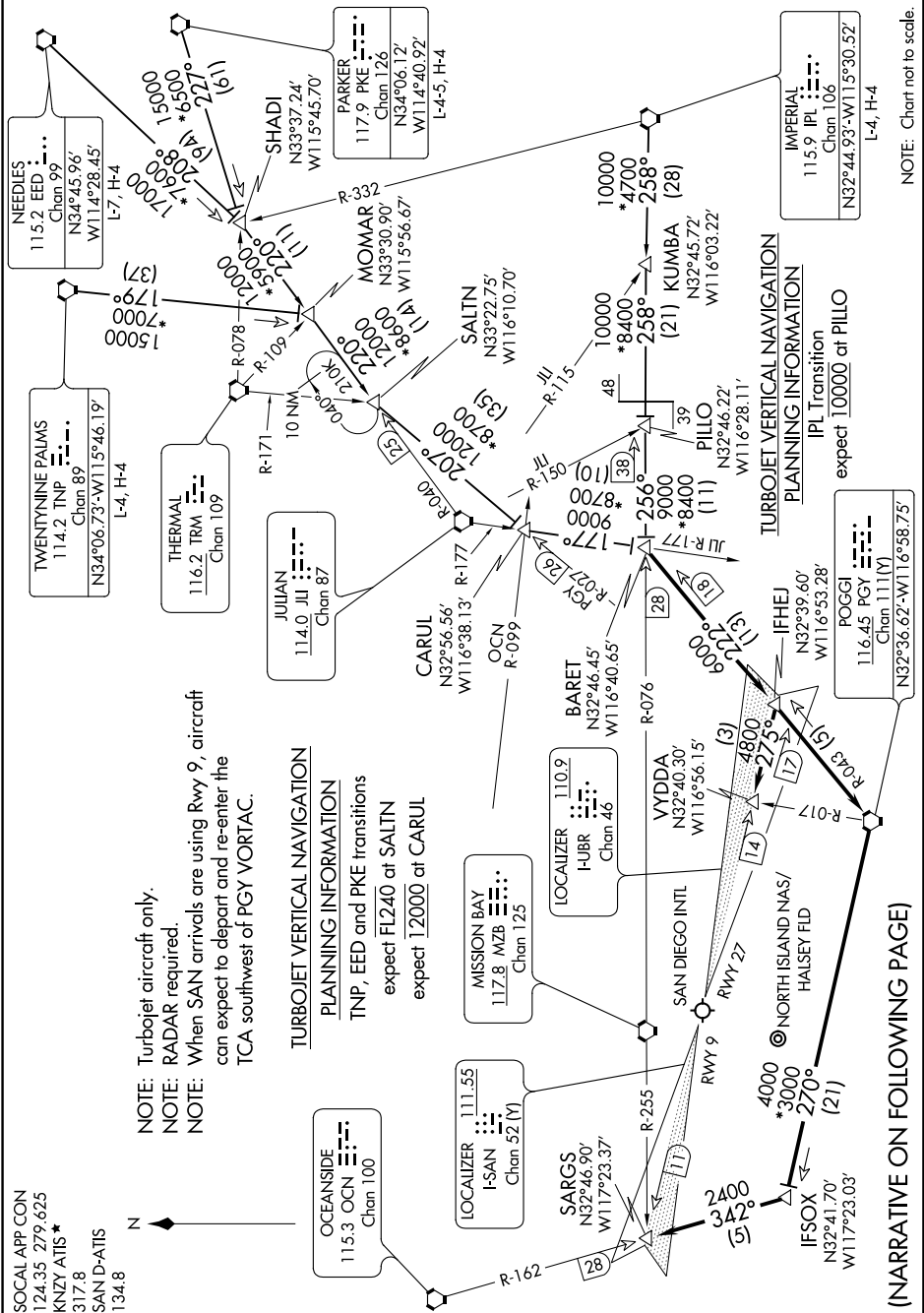


BARET FIVE ARRIVAL

SW-3, 09 SEP 2021 to 07 OCT 2021



NOTE: Turbojet aircraft only.
 NOTE: RADAR required.
 NOTE: When SAN arrivals are using Rwy 9, aircraft can expect to depart and re-enter the TCA southwest of PGY VORTAC.

TURBOJET VERTICAL NAVIGATION PLANNING INFORMATION
 TNP, EED and PKE transitions
 expect FL240 at SALTIN
 expect 12000 at CARUL

(NARRATIVE ON FOLLOWING PAGE)

NOTE: Chart not to scale.

BARET FIVE ARRIVAL

SW-3, 09 SEP 2021 to 07 OCT 2021