

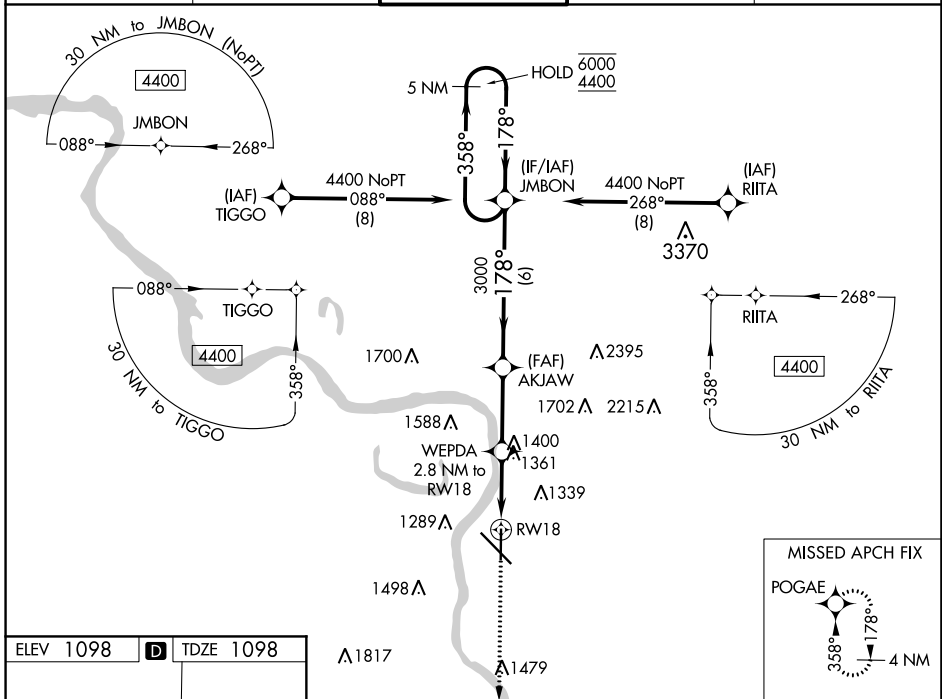
WAAS CH 77838 W18A	APP CRS 178°	Rwy ldg TDZE Apt Elev	6400 1098 1098
--	------------------------	-----------------------------	---

RNAV (GPS) RWY 18

SIoux GATEWAY/BRIG GENERAL BUD DAY FLD (SUX)

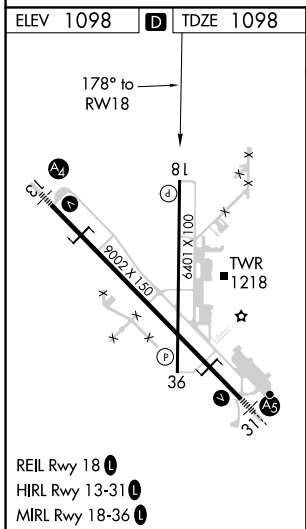
RNP APCH.	For uncompensated Baro-VNAV systems, LNAV/VNAV NA below -20°C or above 54°C.	MISSED APPROACH: Climb to 3200 direct POGAE and hold.
-----------	---	---

ATIS 119.45 270.8	SIoux CITY APP CON * 124.6 307.0	SIoux CITY TOWER * 118.7 (CTAF) 0 254.3	GND CON 121.9 348.6	UNICOM 122.95
-----------------------------	--	---	-------------------------------	-------------------------



NC-3, 09 SEP 2021 to 07 OCT 2021

NC-3, 09 SEP 2021 to 07 OCT 2021



ELEV 1098	D	TDZE 1098		
3200 POGAE	WEPDA 2.8 NM to RWY 18	AKJAW 3000		
*LNAV only	*1.6 NM to RWY 18	JMBON 5 NM Holding Pattern		
3000	2040*	358° → 6000 ← 178° 4400		
1.6	1.2	3 NM		
6 NM				
GP 3.00°		TCH 54		
CATEGORY	A	B	C	D
LPV DA		1352-3/4	254 (300-3/4)	
LNAV/VNAV DA		1430-1	332 (400-1)	
LNAV MDA	1680-1	582 (600-1)	1680-1 3/4	582 (600-1 3/4)
C CIRCLING	1680-1	1700-1	1700-1 3/4	1860-2 1/2
	582 (600-1)	602 (700-1)	602 (700-1 3/4)	762 (800-2 1/2)