

# RNAV (GPS) RWY 30

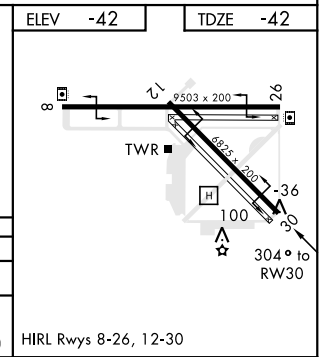
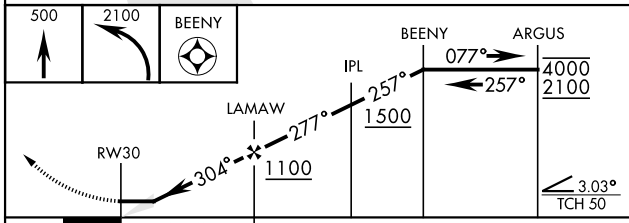
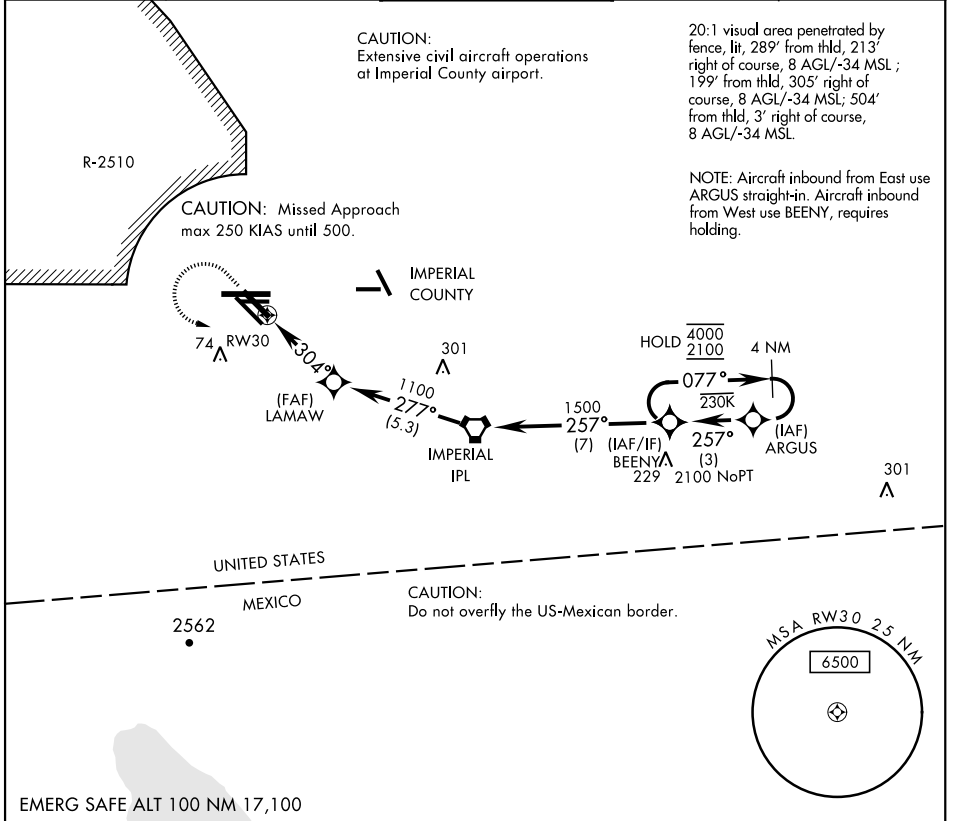
APCH CRS	Rwy ldg	6825
304°	TDZE	-42
	Arpt Elev	-42

AL-472 [USN]

EL CENTRO NAF (VRACIU FLD) (KNJK)

<p><b>▽</b> DME/DME RNP -0.3 NA. Visibility reduction by helicopters NA.</p>	<p>MISSED APPROACH: Climb to 500, then climbing left turn to 2100 direct BEENY and hold.</p>
--	--

<p>ATIS ★ <b>269.275</b></p>	<p>LOS ANGELES CENTER <b>128.6 291.7</b></p>	<p>TOWER ★ <b>119.1 360.2</b></p>	<p>GND CON <b>121.9 254.35</b></p>	<p>CLNC DEL <b>340.2</b></p>
----------------------------------	--	---------------------------------------	--	----------------------------------



CATEGORY	A	B	C	D
LNVA MDA	360-1 402 (500-1)	360-1½ 402 (500-1½)	420-1½ 462 (500-1½)	520-2 562 (600-2)
CIRCLING	420-1 462 (500-1)	420-1½ 462 (500-1½)	520-2 562 (600-2)	

HIRL Rwy 8-26, 12-30

# RNAV (GPS) RWY 30

SW-3, 09 SEP 2021 to 07 OCT 2021

SW-3, 09 SEP 2021 to 07 OCT 2021