

ALTUS, OKLAHOMA

ILS or RNAV (GPS) Y RWY 17R

LOC I-ALT 111.3	APCH CRS 175°	Rwy ldg 13,440
		TDZE 1379
		Arprt Elev 1382

AL-482 (USAF)

ALTUS AFB (KLTS)

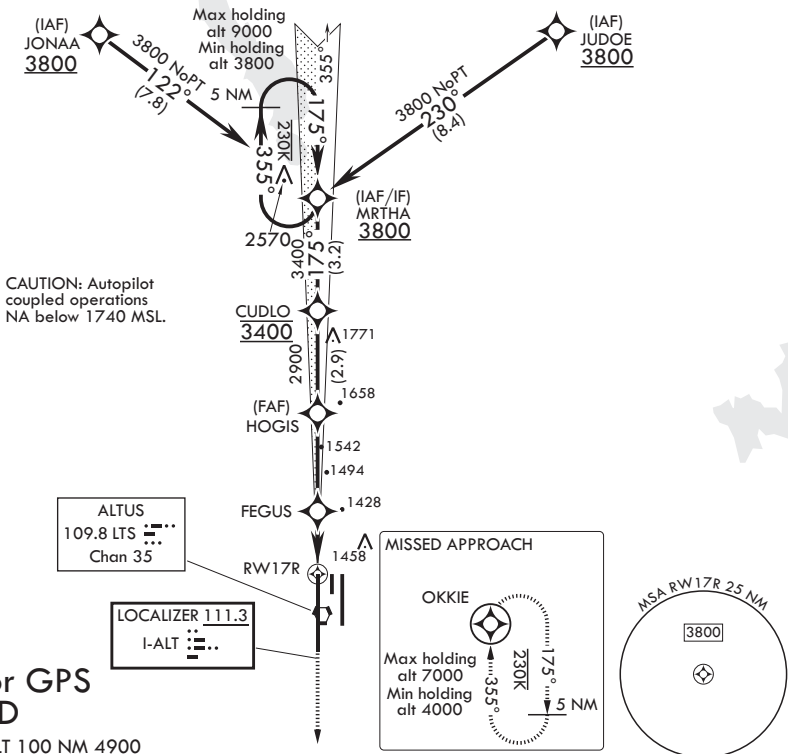
⚠ * When ALS inop, increase CAT AB RVR to 55, vis to 1 mile;
 CAT CDE RVR to 60, vis to 1 1/8 miles;
 ** Circling not authorized W of Rwy 17R-35L.



MISSED APPROACH: Climb to 4000 direct OKKIE and hold.

ATIS★ 109.8 273.5	FORT WORTH CENTER 133.5 350.35	APP CON 125.1 353.7	TOWER★ 119.65 254.4	GND CON 121.85 275.8	CLNC DEL 120.65 284.7
-----------------------------	--	-------------------------------	-------------------------------	--------------------------------	---------------------------------

DME/DME RNP 0.3 NA



RNAV1 or GPS REQUIRED

EMERG SAFE ALT 100 NM 4900

MRTHA		4000 OKKIE		ELEV 1382	TDZE 1379
3800 ← 355° / 175° → 3400		↑ LNAV only		175° 4.6NM from FAF	
GS 3.00° TCH 53		CUDLO HOGIS FEGUS VORTAC		ASSAULT STRIP	
		2900 2000		TWR 1496 BCN 1524	
		2.8 NM 1.8 NM		13,440 x 150	
CATEGORY	A	B	C	D	E
S-ILS 17R	1579/40		200	(200-3/4)	
LNAV MDA*	1760/40	381 (400-3/4)	1760/45	381	(400-7/8)
CIRCLING**	1780-1 398 (400-1)	1840-1 458 (500-1)	1860-1 1/2 478 (500-1 1/2)	1940-2 558 (600-2)	2100-2 1/2 718 (800-2 1/2)
HIRL all Rwys					

ALTUS, OKLAHOMA

34°40'N - 99°16'W

ALTUS AFB (KLTS)

Orig 23MAY19

ILS or RNAV (GPS) Y RWY 17R

SC-1, 09 SEP 2021 to 07 OCT 2021

SC-1, 09 SEP 2021 to 07 OCT 2021