

# ILS Z or LOC RWY 35L

LOC I-LTS <b>110.3</b>	APCH CRS <b>355°</b>	Rwy Idg <b>13,440</b>
		TDZE <b>1354</b>
		Arprt Elev <b>1382</b>

AL-482 [USAF]

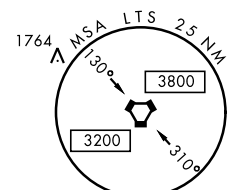
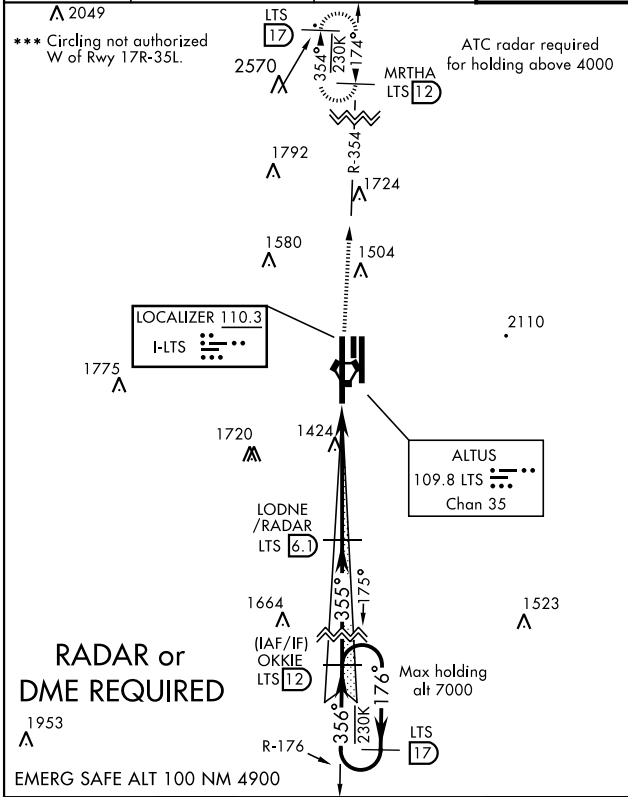
ALTUS AFB (KLTS)

▼ \* When ALS inop, increase RVR to 40 and vis to 3/4 mile;  
RVR 18 authorized with use of FD or AP or HUD to DA.  
\*\* When ALS inop, increase CAT ABCDE RVR to 55  
and vis to 1 mile.



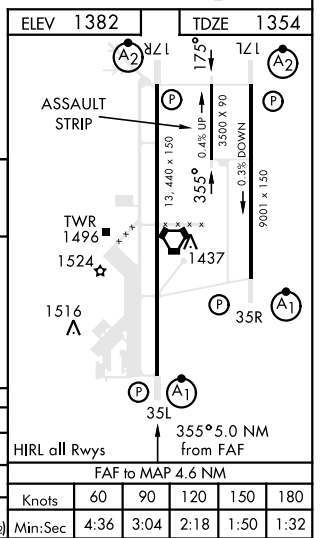
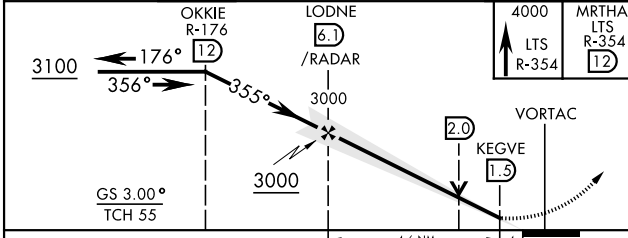
MISSED APPROACH: Climb to 4000, intercept  
LTS VORTAC R-354 to MRTHA and hold.

ATIS ★ <b>109.8 273.5</b>	FORT WORTH CENTER <b>133.5 350.35</b>	ALTUS APP CON <b>125.1 353.7</b>	ALTUS TOWER ★ <b>119.65 254.4</b>	GND CON <b>121.85 275.8</b>	CLNC DEL <b>120.65 284.7</b>
------------------------------	--	-------------------------------------	--------------------------------------	--------------------------------	---------------------------------



**RADAR or DME REQUIRED**

EMERG SAFE ALT 100 NM 4900



CATEGORY	A	B	C	D	E
S-ILS 35L*	1554/24		200	(200-1/2)	
S-LOC 35L**	1700/24	346 (400-1/2)	1700/30	346	(400-5/8)
*** CIRCLING	1780-1 398 (400-1)	1840-1 458 (500-1)	1860-1 1/2 478 (500-1 1/2)	1940-2 558 (600-2)	2100-2 1/2 718 (800-2 1/2)

ALTUS, OKLAHOMA

34°40'N-99°16'W

ALTUS AFB (KLTS)

Amtd 1 16JUL20

# ILS Z or LOC RWY 35L

SC-1, 09 SEP 2021 to 07 OCT 2021

SC-1, 09 SEP 2021 to 07 OCT 2021