

19283

# OKKIE TWO DEPARTURE (RNAV) (OKKIE2•OKKIE)

ALTUS AFB (KLTS)

ALTUS, OKLAHOMA

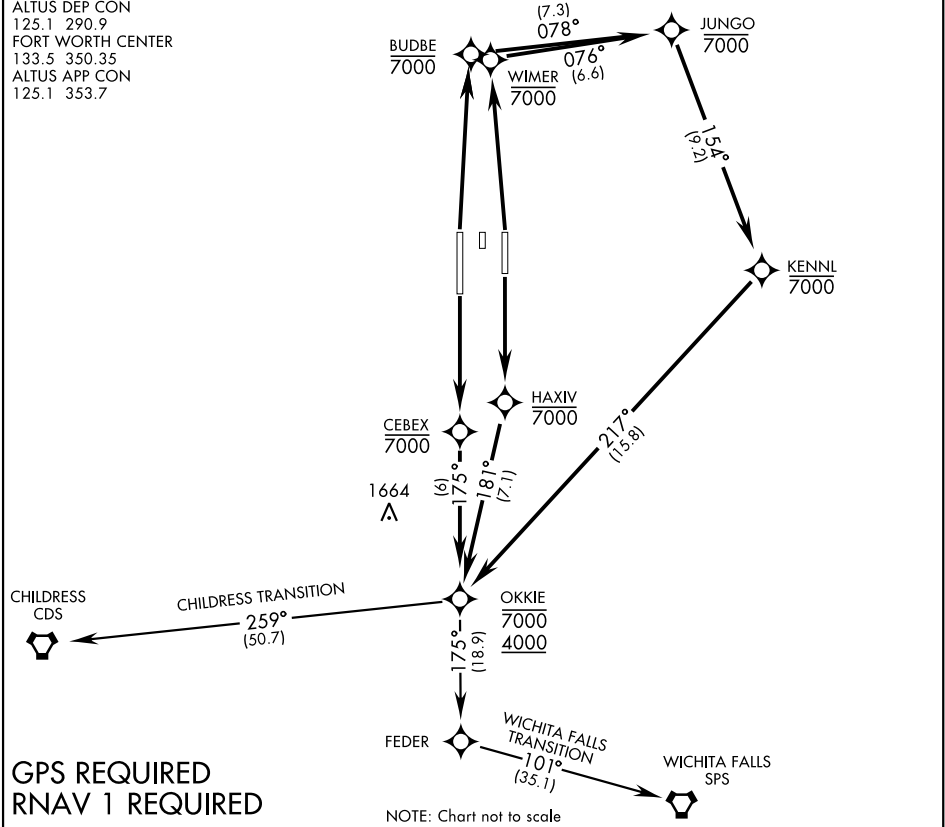
ATIS ★ 109.8 273.5  
 CLNC DEL  
 120.65 284.7  
 GND CON  
 121.85 275.8  
 ALTUS TOWER ★  
 119.65 254.4  
 ALTUS DEP CON  
 125.1 290.9  
 FORT WORTH CENTER  
 133.5 350.35  
 ALTUS APP CON  
 125.1 353.7

SHL-482 [USAF]

Rwy	Knots	60	120	180	240	300	360
35L/R	V/V(fpm)	300	600	900	1200	1500	1800

Minimum Climb to 1900

**TOP ALTITUDE:  
9000**



SC-1, 09 SEP 2021 to 07 OCT 2021

SC-1, 09 SEP 2021 to 07 OCT 2021

**GPS REQUIRED**  
**RNAV 1 REQUIRED**

## DEPARTURE ROUTE DESCRIPTION

**TAKE-OFF RWY 17L:** Climb direct HAXIV, then on track 181° to OKKIE. Cross OKKIE between 4000 and 7000, then via transition or assigned route. Maintain 9000. Expect filed alt 10 minutes after departure.

**TAKE-OFF RWY 17R:** Climb direct CEBEX, then on track 175° to OKKIE. Cross OKKIE between 4000 and 7000, then via transition or assigned route. Maintain 9000. Expect filed alt 10 minutes after departure.

**TAKE-OFF RWY 35L:** Climb direct BUDBE, then on depicted route to OKKIE. Cross OKKIE between 4000 and 7000, then via transition or assigned route. Maintain 9000. Expect filed alt 10 minutes after departure.

**TAKE-OFF RWY 35R:** Climb direct WIMER, then on depicted route to OKKIE. Cross OKKIE between 4000 and 7000, then via transition or assigned route. Maintain 9000. Expect filed alt 10 minutes after departure.

**CHILDRESS TRANSITION (OKKIE2-CDS):** Track 259° to CDS.

**WICHITA FALLS TRANSITION (OKKIE2-SPS):** Track 175° to FEDER, then via 101° track to SPS.

# OKKIE TWO DEPARTURE (RNAV) (OKKIE2•OKKIE)

Orig 10OCT19

ALTUS, OKLAHOMA

ALTUS AFB (KLTS)