

ALTUS, OKLAHOMA

# RNAV (GPS) Z RWY 35R

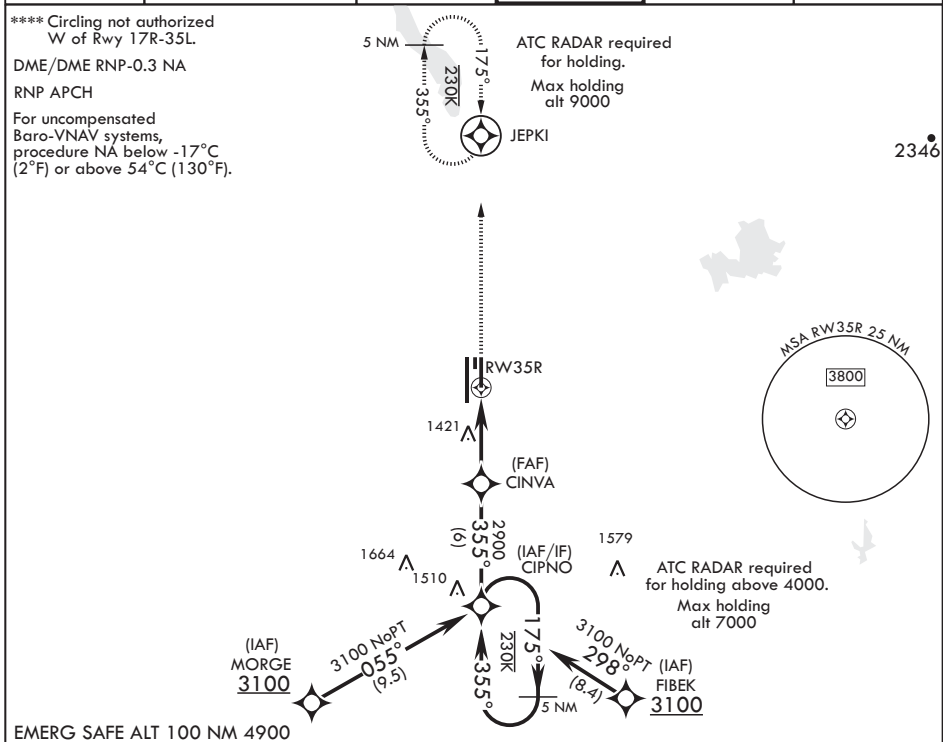
WAAS CH 41169 W35B	APCH CRS 355°	Rwy ldg TDZE 1362 Arprt Elev 1382
--------------------------	------------------	---

AL-482 (USAF)

ALTUS AFB (KLTS)

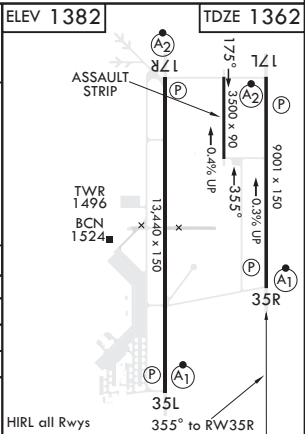
<p><b>V</b> * When ALS inop increase CAT ABCDE RVR to 40, vis to 3/4 mile; RVR 18 authorized with use of FD or AP or HUD to DA.                  ** When ALS inop increase CAT ABCDE RVR to 40, vis to 3/4 mile.                  *** When ALS inop increase CAT AB RVR to 55, vis to 1 mile; CAT CDE RVR 50, vis to 1 mile.</p>	<p>ALSIF-1</p>	<p>MISSED APPROACH: Climb to 4000 direct JEPKI and hold.</p>
--	----------------	--

<p>ATIS ★ 109.8 273.5</p>	<p>FORT WORTH CENTER 133.5 350.35</p>	<p>APP CON 125.1 353.7</p>	<p>TOWER ★ 119.65 254.4</p>	<p>GND CON 121.85 275.8</p>	<p>CLNC DEL 120.65 284.7</p>
-------------------------------	---	--------------------------------	---------------------------------	---------------------------------	----------------------------------



EMERG SAFE ALT 100 NM 4900

<p>GP 3.00° TCH 53</p>	<p>3100</p>	<p>175°</p>	<p>355°</p>	<p>CIPNO</p>	<p>VGSI and RNAV glidepath not coincident.</p>	<p>4000</p>	<p>JEPKI</p>	<p>ELEV 1382</p>	<p>TDZE 1362</p>
<p>† LNAV only</p>									
<p>‡ 0.9 NM to RW35R</p>									
<p>4.7 NM</p>									
CATEGORY	A	B	C	D	E				
LPV DA*	1562/24		200	(200-1/2)					
LNAV/VNAV DA**	1612/24		250	(300-1/2)					
LNAV MDA***	1700/24	338 (400-1/2)	1700/26	338 (400-1/2)					
CIRCLING****	1780-1	1840-1	1860-1 1/2	1940-2	2100-2 1/2				
	398 (400-1)	458 (500-1)	478 (500-1 1/2)	558 (600-2)	718 (800-2 1/2)				



ALTUS, OKLAHOMA

34°40'N - 99°16'W

ALTUS AFB (KLTS)

Amdt 1 20JUN19

# RNAV (GPS) Z RWY 35R

SC-1, 09 SEP 2021 to 07 OCT 2021

SC-1, 09 SEP 2021 to 07 OCT 2021