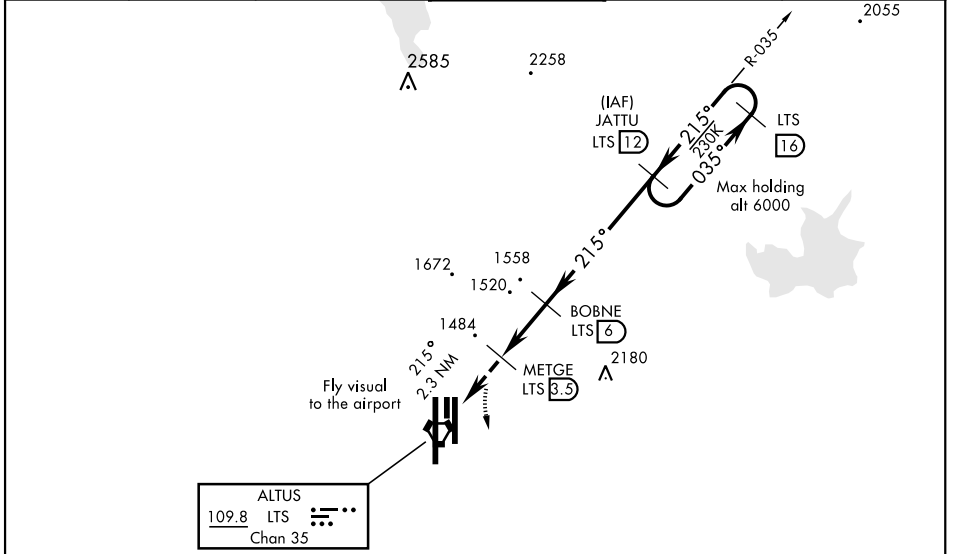


# VOR or TACAN-C

VORTAC LTS <b>109.8</b> Chan <b>35</b>	APCH CRS <b>215°</b>	Rwy Idg TDZE N/A Arprt Elev <b>1382</b>	AL-482 [USAF]	ALTUS AFB (KLTS)
--	-------------------------	---	---------------	------------------

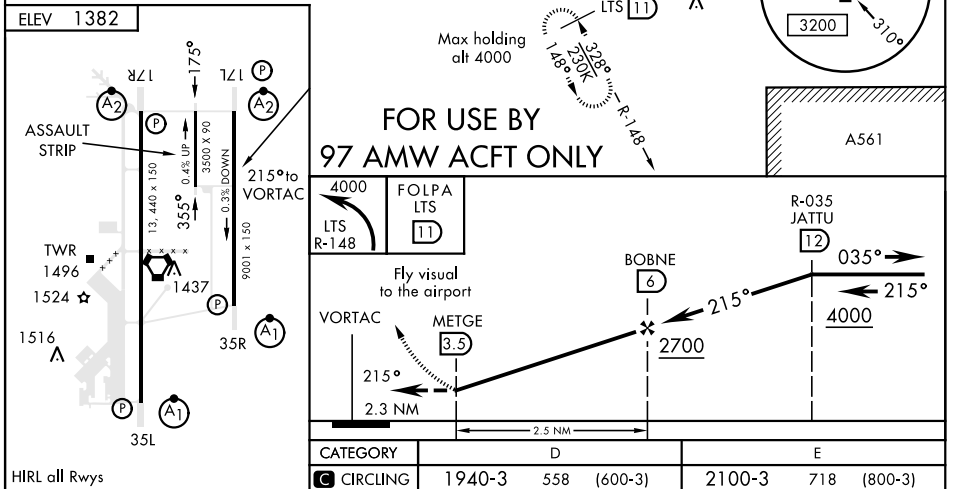
▼ Circling not authorized W of Rwy 17R-35L. MISSED APPROACH: Climbing left turn to 4000, intercept LTS VORTAC R-148 to FOLPA and hold.

ATIS ★ <b>109.8 273.5</b>	FORT WORTH CENTER <b>133.5 350.35</b>	ALTUS APP CON <b>125.1 353.7</b>	ALTUS TOWER ★ <b>119.65 254.4</b>	GND CON <b>121.85 275.8</b>	CLNC DEL <b>120.65 284.7</b>
------------------------------	--	-------------------------------------	--------------------------------------	--------------------------------	---------------------------------



## ATC RADAR REQUIRED DME REQUIRED

EMERG SAFE ALT 100 NM 4900



# VOR or TACAN-C

SC-1, 09 SEP 2021 to 07 OCT 2021