

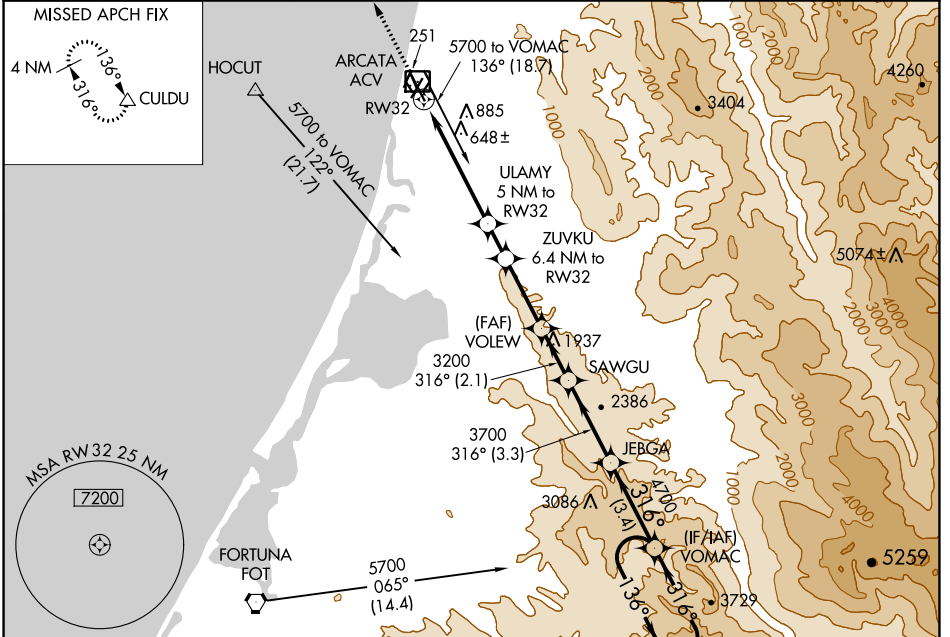
WAAS CH <b>63108</b> <b>W32A</b>	APP CRS <b>316°</b>	Rwy Idg TDZE Apt Elev	<b>5846</b> <b>221</b> <b>222</b>
--	------------------------	-----------------------------	---

# RNAV (GPS) RWY 32

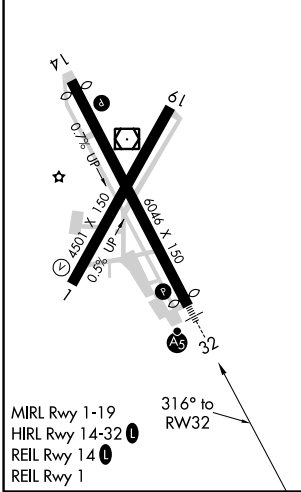
CALIFORNIA REDWOOD COAST-HUMBOLDT COUNTY (ACV)

<b>▽</b> Baro-VNAV NA. Circling NA northeast of Rwy 14-32. <b>▲</b> DME/DME RNP-0.3 NA.	<b>MALSR</b> 	MISSED APPROACH: Climb to 3000 direct CULDU and hold.
--	------------------	---

ASOS <b>118.525</b>	SEATTLE CENTER <b>124.85 306.3</b>	UNICOM <b>123.0 (CTAF)</b>
------------------------	---------------------------------------	-------------------------------



ELEV 222	<b>D</b>	TDZE 221
----------	----------	----------



3000 CULDU	VGSi and RNAV glidepath not coincident (VGSi Angle 3.00/TCH 43).			
<b>▲</b>	ZUVKU	VOLEW	SAWGU	VOMAC
*LNAV only.	ULAMY 6.4 NM to RW32	3200		JEBGA 5 NM Holding Pattern
*2 NM to RW32	5 NM to RW32	1860*	2300*	3200
			3700	4700
	2 NM	3 NM	1.4 NM	2.8 NM
			2.1 NM	3.3 NM
				3.4 NM
CATEGORY	A	B	C	D
LPV DA	441/18		220 (300-½)	
LNAV/VNAV DA	1056-2½		835 (900-2½)	
LNAV MDA	900/24 679 (700-½)	900/40 679 (700-¾)	900-1½	679 (700-1½)
<b>C</b> CIRCLING	900-1 678 (700-1)		900-2 678 (700-2)	900-2¼ 678 (700-2¼)

SW-2, 09 SEP 2021 to 07 OCT 2021

SW-2, 09 SEP 2021 to 07 OCT 2021