

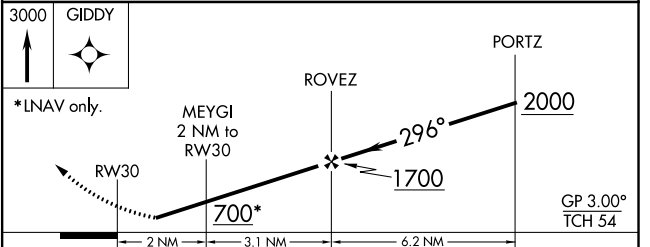
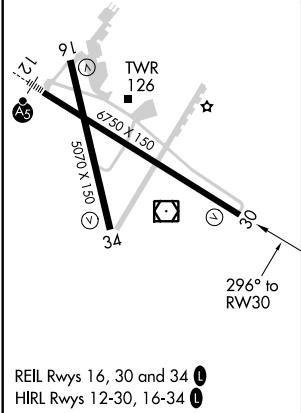
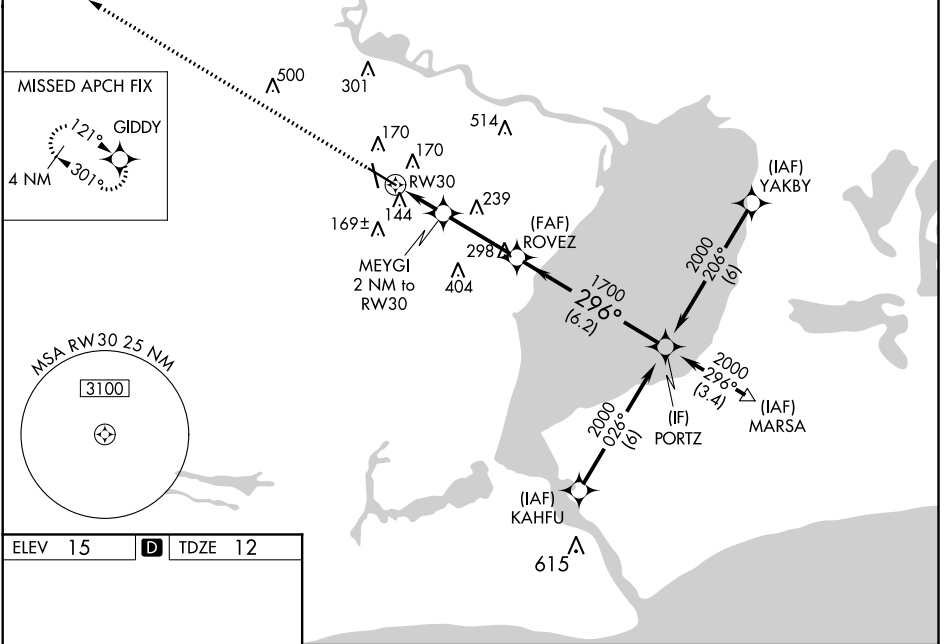
WAAS CH 69216 W30A	APP CRS 296°	Rwy Idg TDZE Apt Elev	6750 12 15
--	------------------------	-----------------------------	---------------------------------------

RNAV (GPS) RWY 30

JACK BROOKS RGNL (BPT)

RNP APCH.			MISSED APPROACH: Climb to 3000 direct GIDDY and hold.	
RADAR required.				
<p>⚠ Baro-VNAV NA when using Orange County altimeter setting. For uncompensated Baro-VNAV systems, LNAV/VNAV NA below -15°C (5°F) or above 49°C (120°F). Rwy 30 helicopter visibility reduction below 3/4 SM NA. When local altimeter setting not received, use Orange County altimeter setting: increase LPV DA to 295 feet; increase LNAV/VNAV DA to 436 feet; increase all MDAs 40 feet, increase LPV and LNAV/VNAV all Cats visibility 1/4 SM and LNAV Cat E visibility 1/4 SM.</p>				

ATIS 126.3	HOUSTON APP CON 121.3 377.1	BEAUMONT TOWER* 119.5 (CTAF) 0	GND CON 124.85	CLNC DEL 118.3	UNICOM 122.95
----------------------	---------------------------------------	--	--------------------------	--------------------------	-------------------------



CATEGORY	A	B	C	D	E
LPV DA	263-3/4		251 (300-3/4)		
LNAV/VNAV DA	404-1 1/4		392 (400-1 1/4)		404-1 1/2 392 (400-1 1/2)
LNAV MDA	540-1	528 (600-1)	540-1 1/2 528 (600-1 1/2)	540-1 3/4	528 (600-1 3/4)

SC-5, 09 SEP 2021 to 07 OCT 2021

SC-5, 09 SEP 2021 to 07 OCT 2021