

VOR/DME BPT 114.5 Chan 92	APP CRS 120°	Rwy Idg 6750 TDZE 15 Apt Elev 15
---	------------------------	---

VOR RWY 12

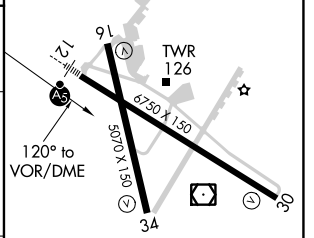
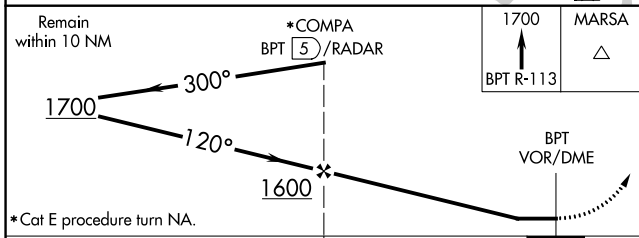
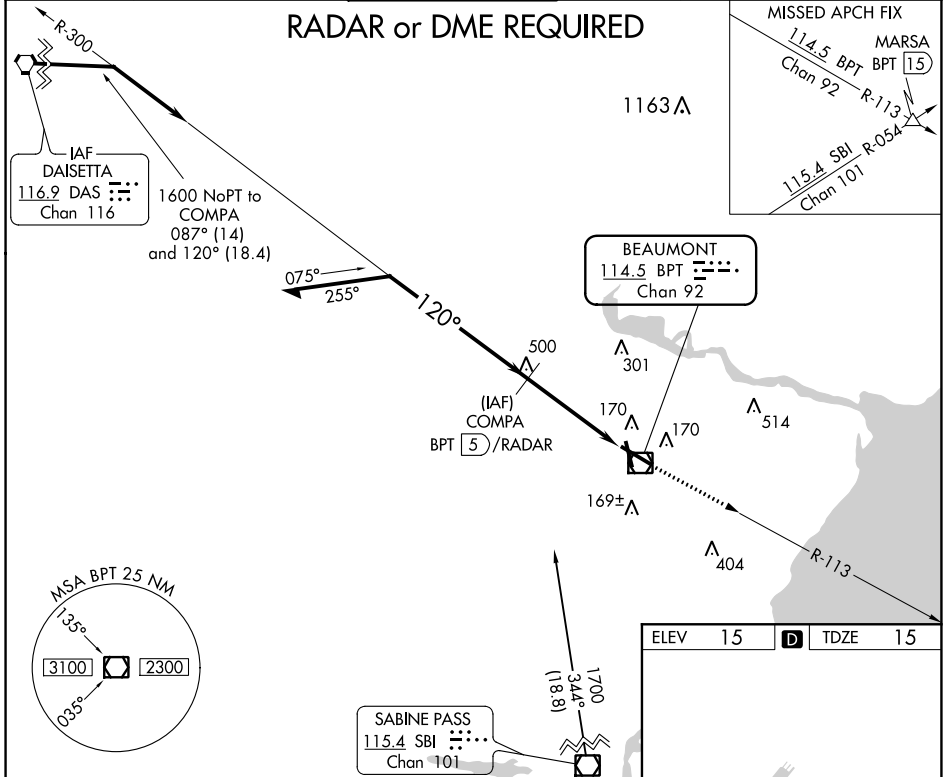
JACK BROOKS RGNL (BPT)

⚠ For inoperative MALS/R, increase S-12 Cat C/D/E visibility to RVR 6000. When local altimeter setting not received, use Orange County altimeter setting and increase all MDA 40 feet and S-12 Cat C/D/E visibility to RVR 4500. For inop MALS/R when using Orange County altimeter setting, increase S-12 Cat E visibility to 1½ mile.

MALS/R

MISSED APPROACH:
Climb to 1700 via BPT R-113 to MARS/A Int/BPT 15 DME.

ATIS 126.3	HOUSTON APP CON 121.3 377.1	BEAUMONT TOWER* 119.5 (CTAF) 0	GND CON 124.85	CLNC DEL 118.3	UNICOM 122.95
----------------------	---------------------------------------	--	--------------------------	--------------------------	-------------------------



	4.2 NM				
CATEGORY	A	B	C	D	E
S-12	420/24	405 (500-½)	420/40	405 (500-¾)	
CIRCLING	480-1 465 (500-1)	840-1¼ 825 (900-1¼)	840-2½ 825 (900-2½)	840-2¾ 825 (900-2¾)	840-3 825 (900-3)

REIL Rwy 16, 30 and 34 **0**
HIRL Rwy 12-30, 16-34 **0**

SC-5, 09 SEP 2021 to 07 OCT 2021

SC-5, 09 SEP 2021 to 07 OCT 2021