

VOR/DME BPT 114.5 Chan 92	APP CRS 359°	Rwy Idg 5070 TDZE 15 Apt Elev 15
---	------------------------	---

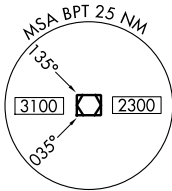
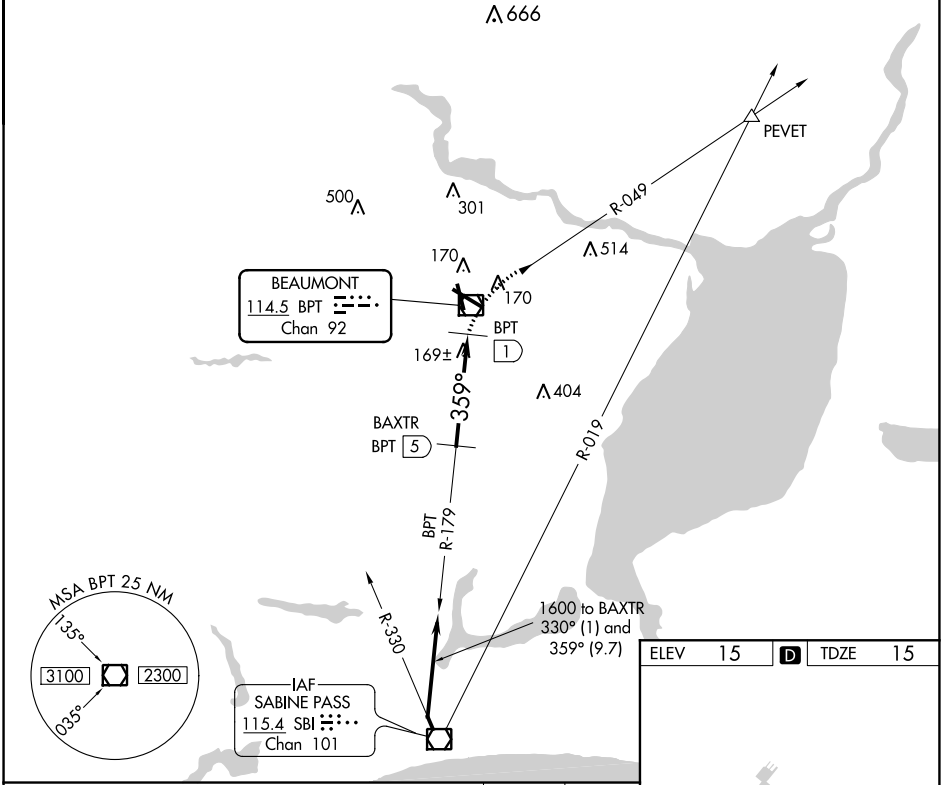
VOR/DME RWY 34

JACK BROOKS RGNL (BPT)

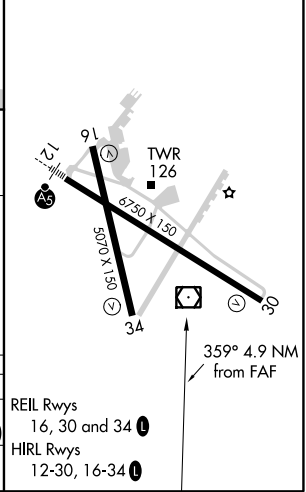
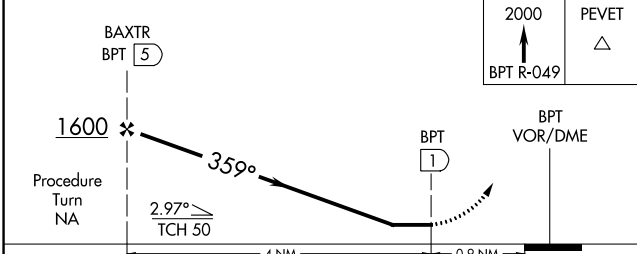
⚠ When local altimeter setting not received, use Orange County altimeter setting and increase all MDA 40 feet, increase S-34 visibility Cat C and D ¼ SM.

⚠ MISSED APPROACH: Climb to 2000 via BPT VOR/DME R-049 to PEVET INT.

ATIS 126.3	HOUSTON APP CON 121.3 377.1	BEAUMONT TOWER* 119.5 (CTAF) 0	GND CON 124.85	CLNC DEL 118.3	UNICOM 122.95
----------------------	---------------------------------------	--	--------------------------	--------------------------	-------------------------



ELEV 15	D	TDZE 15
---------	----------	---------



CATEGORY	A	B	C	D	E
S-34	500-1¼	485 (500-1¼)	500-1½	485 (500-1½)	500-1¾
CIRCLING	500-1¼	840-1½	840-2½	840-2¾	840-3
	485 (500-1¼)	825 (900-1½)	825 (900-2½)	825 (900-2¾)	825 (900-3)

REIL Rwy 16, 30 and 34
HIRL Rwy 12-30, 16-34

SC-5, 09 SEP 2021 to 07 OCT 2021

SC-5, 09 SEP 2021 to 07 OCT 2021