

WAAS CH <b>65927</b> <b>W33A</b>	APP CRS <b>339°</b>	Rwy Idg TDZE Apt Elev	<b>5659</b> <b>4782</b> <b>4875</b>
--	------------------------	-----------------------------	---

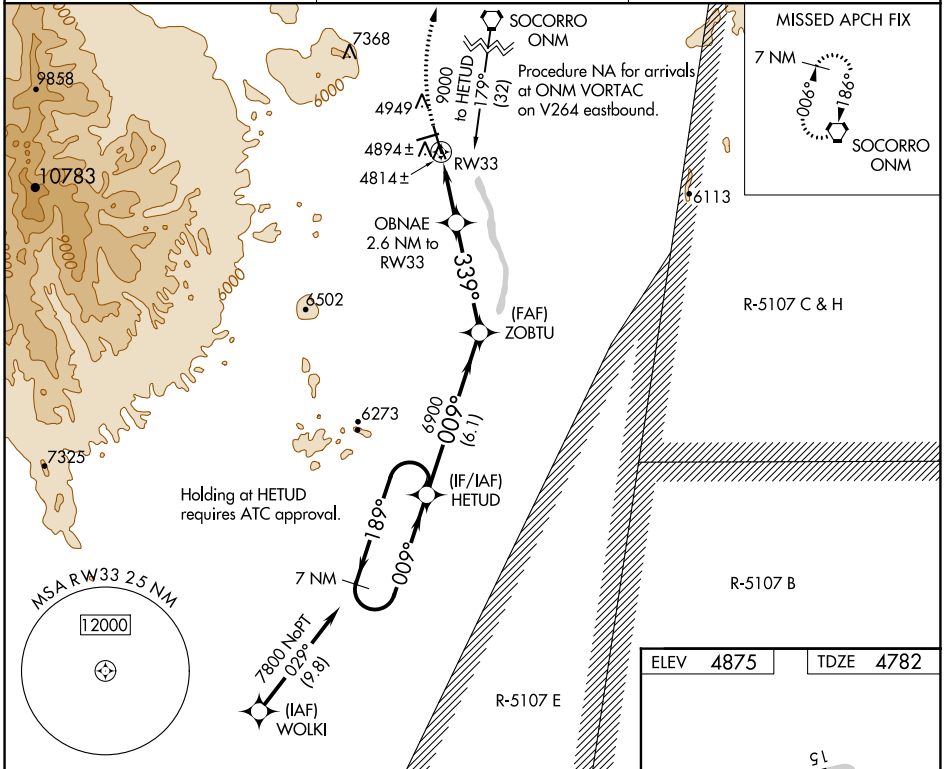
# RNAV (GPS) RWY 33

SOCORRO MUNI (ONM)

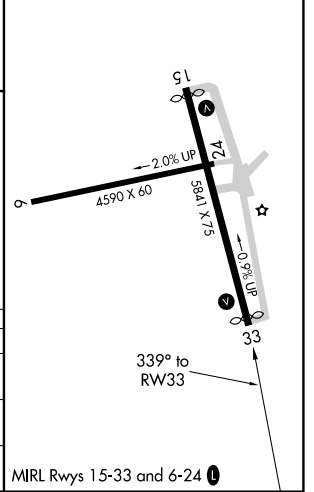
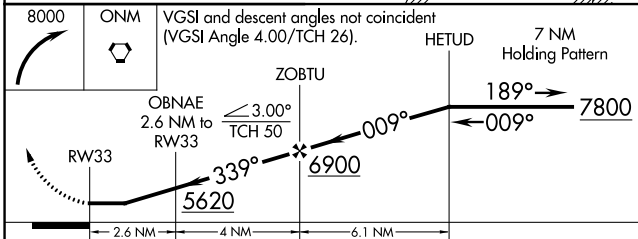
When VGSI inop, Circling Rwy 15 NA at night. When VGSI inop, Straight-in/Circling Rwy 33 procedure NA at night. DME/DME RNP-0.3 NA. Visibility reduction by helicopters NA. Circling Rwy west of Rwy 15-33. When local altimeter setting not received, procedure NA.

MISSED APPROACH: Climbing right turn to 8000 direct ONM VORTAC and hold.

AWOS-3 <b>118.325</b>	ALBUQUERQUE CENTER <b>124.325 288.25</b>	UNICOM <b>122.8 (CTAF) 0</b>
--------------------------	---	---------------------------------



ELEV <b>4875</b>	TDZE <b>4782</b>
------------------	------------------



CATEGORY	A	B	C	D
LP MDA	5080-1 298 (300-1)			NA
LNAV MDA	5160-1	378 (300-1)	5160-1 $\frac{1}{8}$ 378 (300-1 $\frac{1}{8}$ )	NA
CIRCLING	5320-1 445 (500-1)	5340-1 465 (500-1)	5340-1 $\frac{1}{2}$ 465 (500-1 $\frac{1}{2}$ )	NA

MIRL Rwy 15-33 and 6-24 0

SW-1, 09 SEP 2021 to 07 OCT 2021

SW-1, 09 SEP 2021 to 07 OCT 2021