

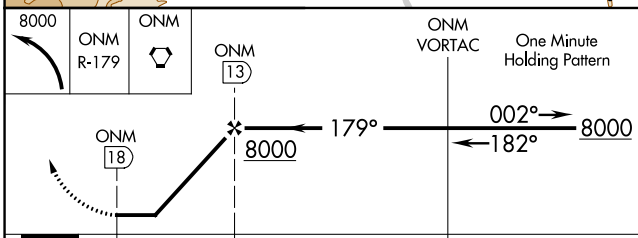
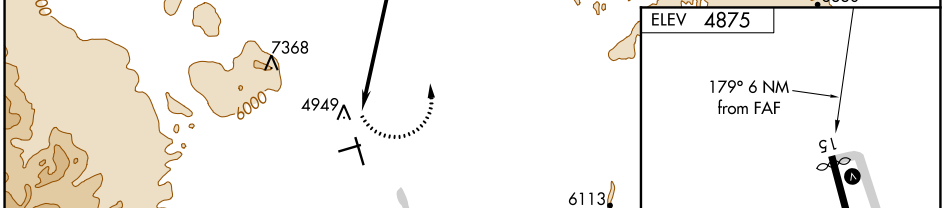
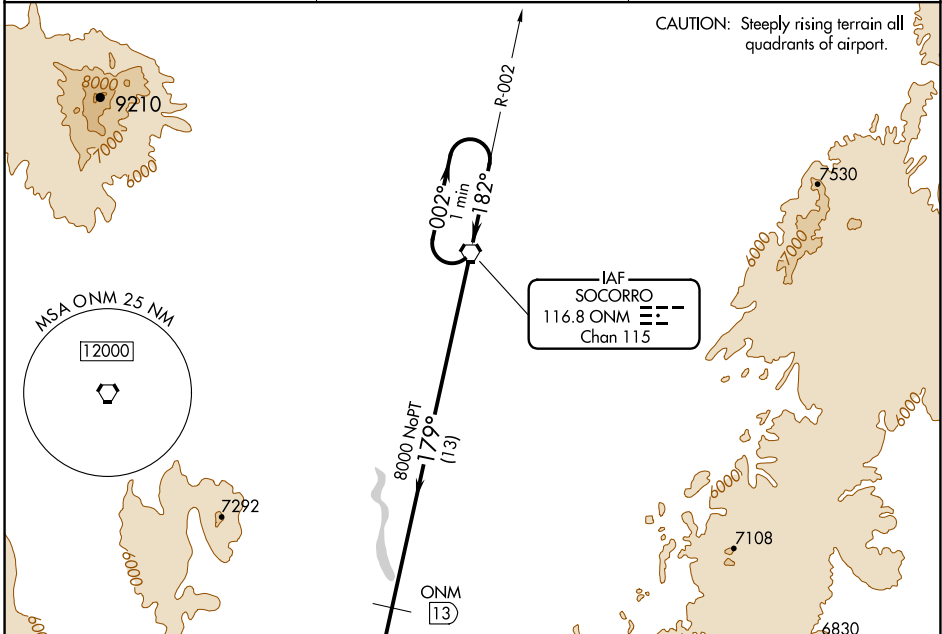
VORTAC ONM <b>116.8</b> Chan <b>115</b>	APP CRS <b>179°</b>	Rwy Idg TDZE Apt Elev <b>4875</b>	<b>N/A</b> <b>N/A</b> <b>4875</b>
---	------------------------	---	---

**VOR/DME-A**  
SOCORRO MUNI (ONM)

**NA** When local altimeter not available, procedure not authorized.  
Circling not authorized west of Rwy 15-33.  
If arrival over Socorro VOR is above 8000 descend in the holding pattern to 8000 before commencing approach.

MISSED APPROACH: Climbing left turn to 8000 intercept ONM R-179 direct to ONM VORTAC and hold.

AWOS-3 <b>118.325</b>	ALBUQUERQUE CENTER <b>124.325 288.25</b>	UNICOM <b>122.8 (CTAF) 0</b>
--------------------------	---	---------------------------------



CATEGORY	A	B	C	D
CIRCLING	6540-1¼ 1665 (1700-1¼)	6540-1½ 1665 (1700-1½)	6540-3 1665 (1700-3)	NA

ELEV 4875

179° 6 NM from FAF

51

24

33

4590 X 60

3841 X 75

4060 X 60

2.0% UP

0.6% UP

MIRL Rwy 15-33 and 6-24 0

SW-1, 09 SEP 2021 to 07 OCT 2021

SW-1, 09 SEP 2021 to 07 OCT 2021