

SPOKANE, WASHINGTON

RNAV (GPS) RWY 23

APCH CRS	Rwy Idg	13,899
231°	TDZE	2423
	Arpt Elev	2462

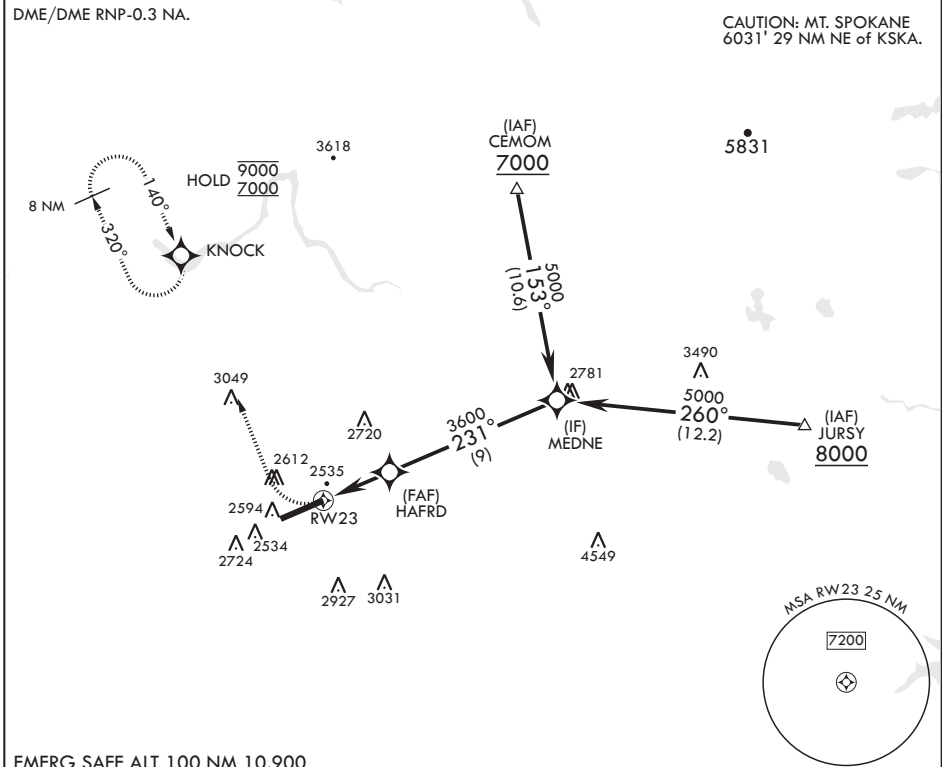
AL-553 (USAF)

FAIRCHILD AFB (KSKA)

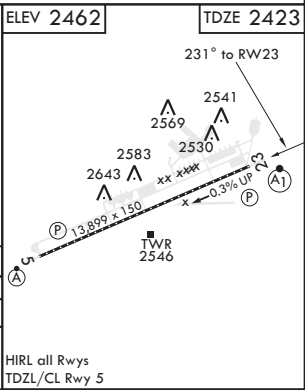
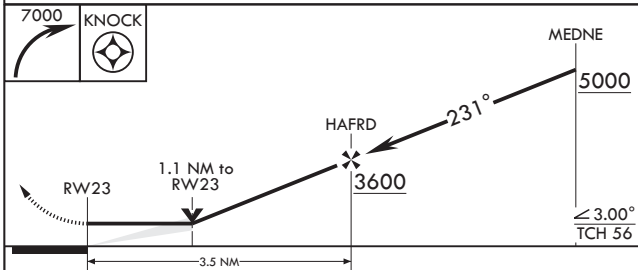
▼ * When ALS inop, increase CAT AB RVR to 55 and vis to 1 mile, CAT CDE vis to 1 1/4 miles.
 ** Circling S of Rwy 5-23 NA.

ALSF-1 MISSED APPROACH: Climb to 7000 via right turn direct to KNOCK and hold, continue climb in hold to 7000.

ATIS 257.625	SPOKANE APP CON 123.75 282.25 (208°-028°) 133.35 263.0 (029°-207°)	TOWER 120.35 233.7	GND CON 123.6 275.8
-------------------------------	---	-------------------------------------	--------------------------------------



EMERG SAFE ALT 100 NM 10,900



CATEGORY	A	B	C	D	E
LNVA MDA*	2820/24 397 (400-½)		2820/35 397 (400-¾)		
C CIRCLING**	2900-1 438 (500-1)	2920-1 458 (500-1)	3040-1½ 578 (600-1½)	3040-2 578 (600-2)	3500-3 1038 (1100-3)

HIRL all Rwys
 TDZL/CL Rwy 5

SPOKANE, WASHINGTON

47°37'N - 117°39'W

FAIRCHILD AFB (KSKA)

Amdt 1 24MAY18

RNAV (GPS) RWY 23

NW-1, 09 SEP 2021 to 07 OCT 2021

NW-1, 09 SEP 2021 to 07 OCT 2021