

SPOKANE, WASHINGTON

RNAV (GPS) RWY 5

APCH CRS	Rwy Idg	13,899
051°	TDZE	2462
	Arprt Elev	2462

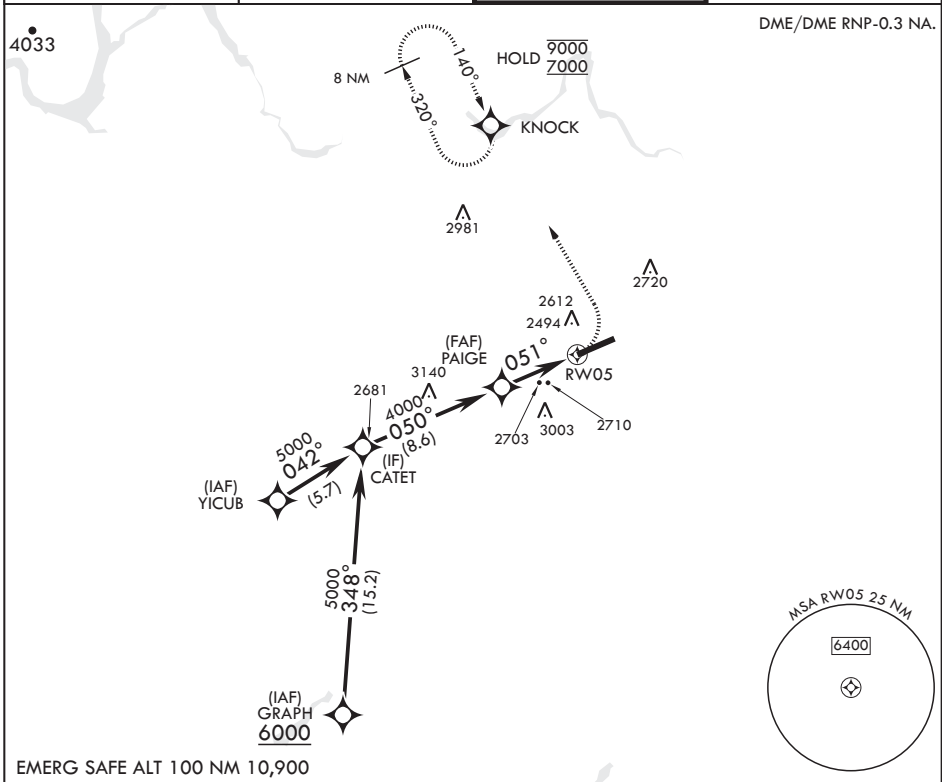
AL-553 (USAF)

FAIRCHILD AFB (KSKA)

V * When ALS inop, increase CAT A RVR to 55, vis to 1 mile, CAT B RVR to 60, vis to 1 1/4 miles, and CAT CDE vis to 2 1/2 miles.
 ** Circling not authorized S of Rwy 5-23.

ALSF-2 MISSED APPROACH: Climb to 7000 via left turn direct KNOCK and hold, continue climb in hold to 7000.

ATIS 257.625	SPOKANE APP CON 123.75 282.25 (208°-028°) 133.35 263.0 (029°-207°)	TOWER 120.35 233.7	GND CON 123.6 275.8
------------------------	--	------------------------------	-------------------------------



CATET	5000	050°	PAIGE	4000	051°	1.8 NM to RWY 5	RWY 5	7000	KNOCK	ELEV 2462	TDZE 2462	
3.00° TCH 58												
4.6 NM												
CATEGORY	A	B	C	D	E							
LNAV MDA*	3080/24	618 (700-½)	3080-1⅓	618	3500-3							
C CIRCLING**	3080-1	618 (700-1)	3080-1¼	618 (700-1¼)	3080-2	1038 (700-2)	1038 (1100-3)	051° to RWY 5 HIRL all Rwys TDZL/CL Rwy 5				

SPOKANE, WASHINGTON
Amdt 1 24MAY18

47°37'N - 117°39'W

FAIRCHILD AFB (KSKA)

RNAV (GPS) RWY 5

NW-1, 09 SEP 2021 to 07 OCT 2021

NW-1, 09 SEP 2021 to 07 OCT 2021