

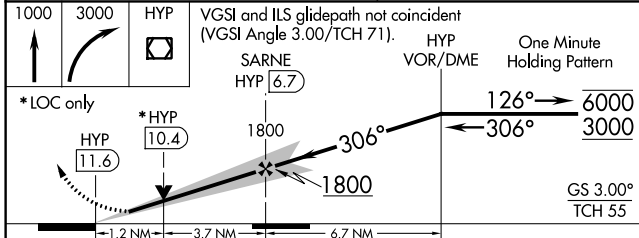
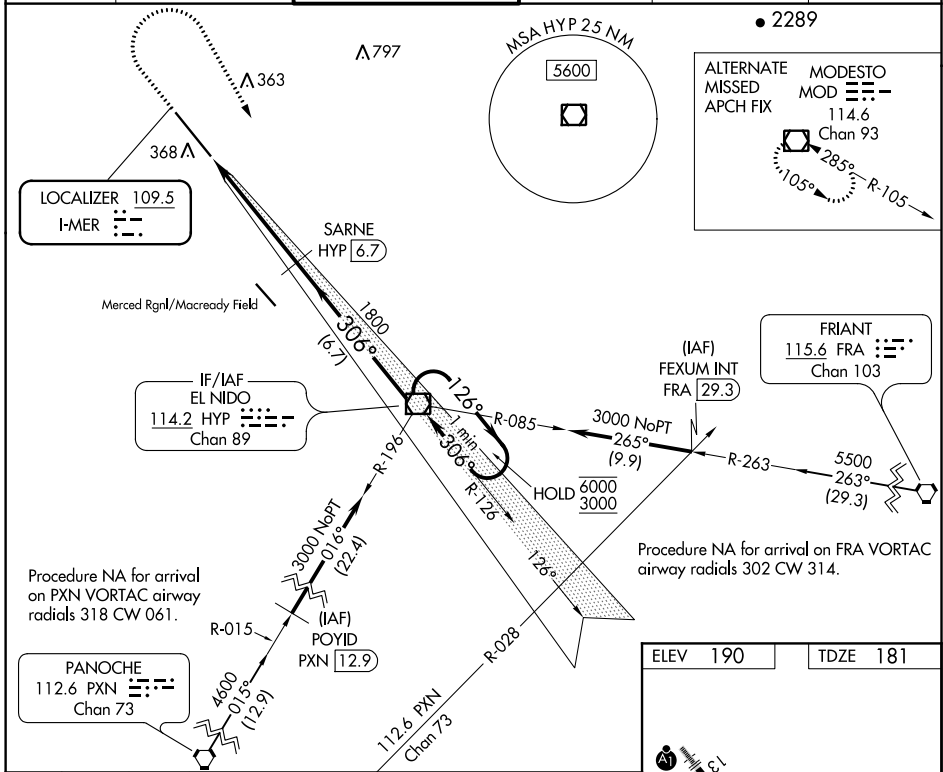
LOC I-MER <b>109.5</b>	APP CRS <b>306°</b>	Rwy Idg <b>11802</b> TDZE <b>181</b> Apt Elev <b>190</b>
---------------------------	------------------------	--

# ILS or LOC RWY 31

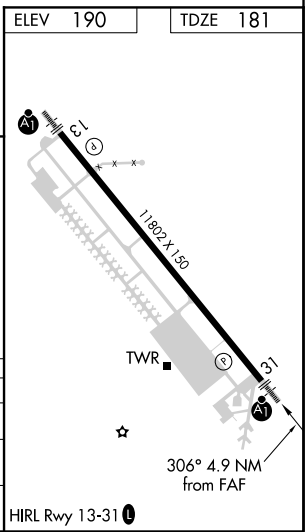
CASTLE (MER)

DME required for LOC only.	ALSF-1 	MISSED APPROACH: Climb to 1000 then climbing right turn to 3000 direct HYP VOR/DME and hold.
Circling NA southwest of Rwy 13-31. DME from HYP VOR/DME.	Simultaneous reception of I-MER and HYP DME required.	

ATIS <b>124.475</b>	NORCAL APP CON <b>120.95 269.45</b>	CASTLE TOWER * <b>118.175 (CTAF) 235.775</b>	GND CON <b>133.575</b>	UNICOM <b>122.95</b>	<b>123.0</b>
------------------------	--	---	---------------------------	-------------------------	--------------



CATEGORY	A	B	C	D
S-ILS 31	381-1/2		200 (200-1/2)	
S-LOC 31	620-1/2 439 (500-1/2)		620-3/4 439 (500-3/4)	
CIRCLING	660-1 470 (500-1)		720-1 1/2 800-2 530 (600-1 1/2) 610 (700-2)	



SW-2, 09 SEP 2021 to 07 OCT 2021

SW-2, 09 SEP 2021 to 07 OCT 2021