

LOC I-GLH <b>109.1</b>	APP CRS <b>177°</b>	Rwy ldg <b>7981</b> TDZE <b>129</b> Apt Elev <b>131</b>
---------------------------	------------------------	---

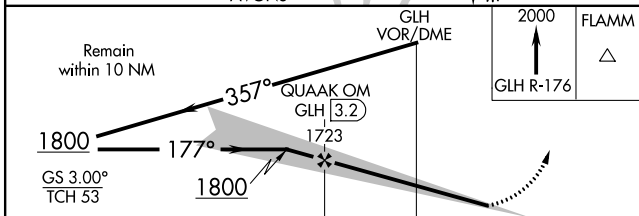
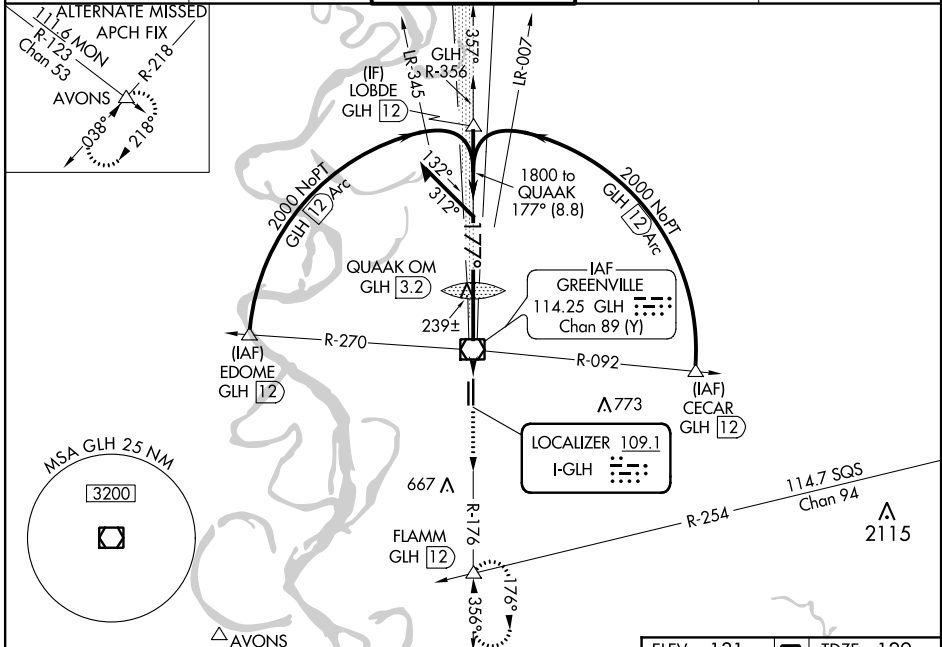
# ILS or LOC RWY 18L

GREENVILLE MID-DELTA (GLH)

**MAJORITY** When local altimeter setting not received, use Greenwood altimeter setting. For inop MALS when using Greenwood altimeter setting, increase S-ILS 18L and S-LOC 18L all Cts visibility ½ mile.

**MALS** MISSED APPROACH: Climb to 2000 on GLH VOR/DME R-176 to FLAMM INT/12 DME and hold.

ASOS <b>125.525</b>	MEMPHIS CENTER <b>135.875 269.35</b>	GREENVILLE TOWER ★ <b>119.0</b> (CTAF) <b>0 256.9</b>	GND CON <b>121.8 256.9</b>	UNICOM <b>122.95</b>
------------------------	---	--	-------------------------------	-------------------------



ELEV 131	<b>D</b>	TDZE 129			
177° 4.8 NM from FAF					
REIL Rwy 36R	MIRL Rwy 18R-36L	HIRL Rwy 18L-36R			
FAF to MAP 4.8 NM					
Knots	60	90	120	150	180
Min:Sec	4:48	3:12	2:24	1:55	1:36

CATEGORY	A	B	C	D
S-ILS 18L	329/24		200 (200-½)	
S-LOC 18L	500/24		371 (400-½)	
CIRCLING	600-1		600-1½	
	469 (500-1)		469 (500-1½)	
GREENWOOD ALTIMETER SETTING MINIMUMS				
S-ILS 18L	529/40		400 (400-¾)	
S-LOC 18L	700/40		700/50	
	571 (600-¾)		571 (600-1)	
CIRCLING	800-1¼		800-2	
	669 (700-1¼)		669 (700-2)	

SC-4, 09 SEP 2021 to 07 OCT 2021

SC-4, 09 SEP 2021 to 07 OCT 2021