

WAAS CH 77611 W36A	APP CRS 357°	Rwy Idg 7019 TDZE 130 Apt Elev 131
--	------------------------	---

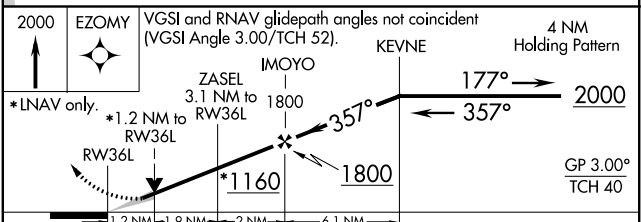
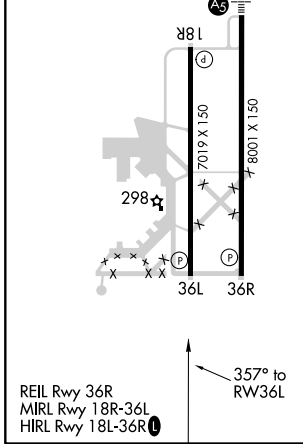
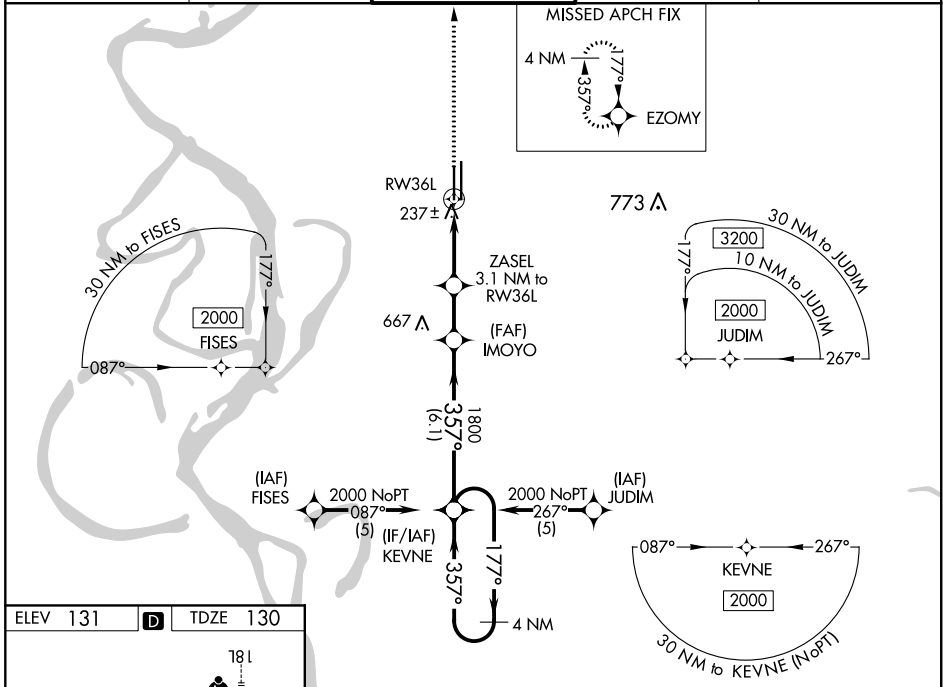
RNAV (GPS) RWY 36L

GREENVILLE MID-DELTA (GLH)

⚠ For uncompensated Baro-VNAV systems, LNAV/VNAV NA below -15°C (5°F) or above 54°C (130°F).
⚠ DME/DME RNP-0.3 NA. When local altimeter setting not received, use Greenwood altimeter setting and increase LPV DA to 575 feet and all Cats visibility ¼ SM; increase LNAV/VNAV DA to 620 feet and all Cats visibility ½ SM; increase all MDA 120 feet and LNAV Cat C visibility ¼ SM, Cat D and Circling Cat D visibility ½ SM. VDP and Baro-VNAV NA when using Greenwood altimeter setting.

MISSED APPROACH: Climb to 2000 direct EZOMY and hold.

ASOS 125.525	MEMPHIS CENTER 135.875 269.35	GREENVILLE TOWER ★ 119.0 (CTAF) 0 256.9	GND CON 121.8 256.9	UNICOM 122.95
------------------------	---	--	-------------------------------	-------------------------



CATEGORY	A	B	C	D
LPV DA	467-1¼ 337 (400-1¼)			
LNAV/VNAV DA	512-1¼ 382 (400-1¼)			
LNAV MDA	540-1 410 (500-1)		540-1¼ 410 (500-1¼)	
CIRCLING	600-1 469 (500-1)		600-1½ 800-2 469 (500-1½) 669 (700-2)	

SC-4, 09 SEP 2021 to 07 OCT 2021

SC-4, 09 SEP 2021 to 07 OCT 2021