

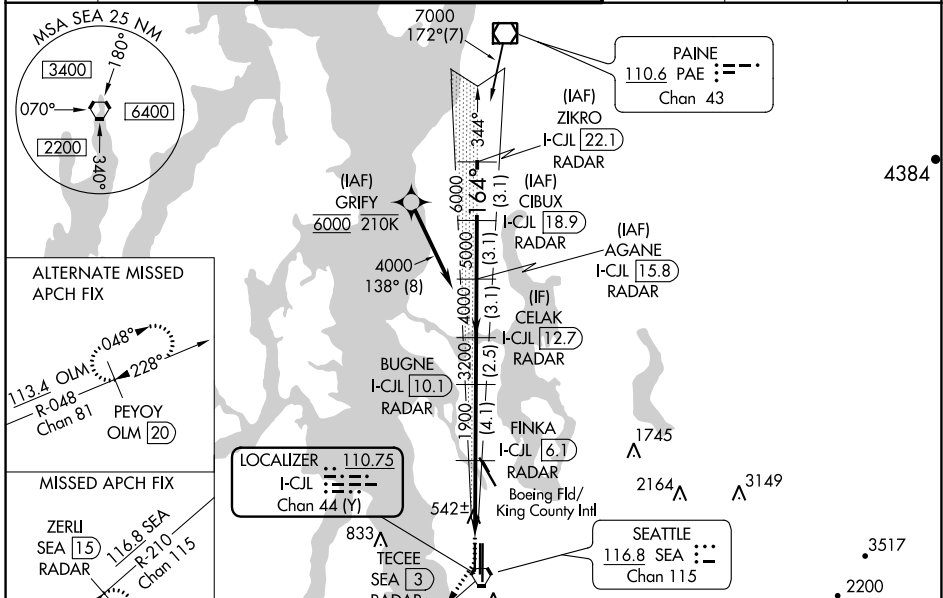
LOC/DME I-CJL 110.75 Chan 44 (Y)	APP CRS 164°	Rwy Idg TDZE Apt Elev	8500 415 432
---	------------------------	--------------------------	---

ILS RWY 16R (CAT II & III)

SEATTLE-TACOMA INTL (SEA)

DME or RADAR required. From GRIFY: RNAV 1-GPS required.	ALSF-2	MISSED APPROACH: Climb to 900 then climb on heading 195° and on SEA VORTAC R-210 to cross TECEE/SEA 3 DME/RADAR at or below 2000 then climb to 5000 on SEA VORTAC R-210 to ZERLI/SEA 15 DME/RADAR and hold, continue climb-in-hold to 5000.
---	--------	---

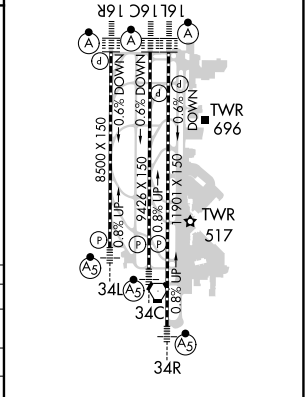
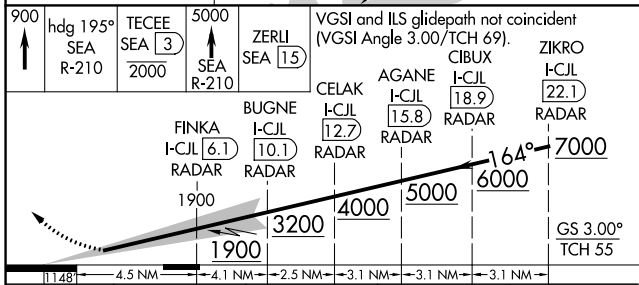
D-ATIS 118.0	SEATTLE APP CON 133.65 273.45	SEATTLE TOWER 119.9 239.3 (Rwys 16L, 16C, 34C, 34R) 120.95 239.3 (Rwys 16R, 34L)	GND CON 121.7	CLNC DEL 128.0	CPDLC
------------------------	---	--	-------------------------	--------------------------	-------



NW-1, 09 SEP 2021 to 07 OCT 2021

NW-1, 09 SEP 2021 to 07 OCT 2021

ELEV 432	D	TDZE 415
----------	---	----------



CATEGORY	A	B	C	D
S-ILS 16R	CAT II RA 139/12 100 DA 515			
S-ILS 16R	CAT III RVR 03			

CATEGORY II & III ILS - SPECIAL AIRCREW & AIRCRAFT CERTIFICATION REQUIRED

HIRL all Rwys TDZ/CL Rwys 16L, 16C, 16R and 34R