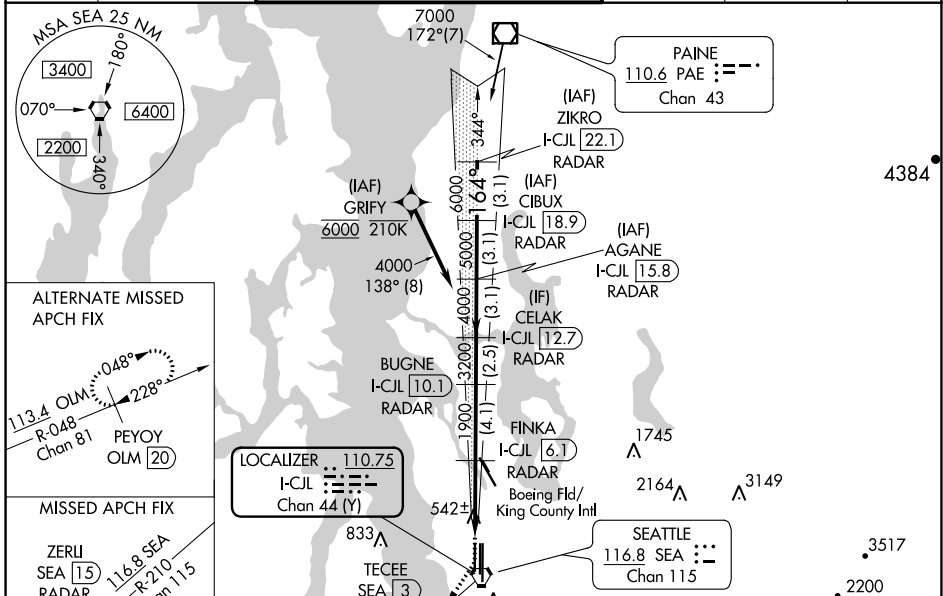


LOC/DME I-CJL <b>110.75</b> Chan 44 (Y)	APP CRS <b>164°</b>	Rwy Idg TDZE Apt Elev	<b>8500</b> <b>415</b> <b>432</b>
---	------------------------	-----------------------------	---

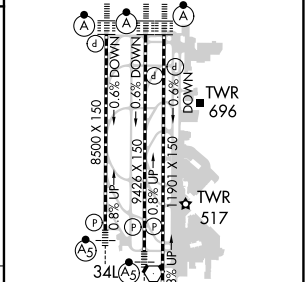
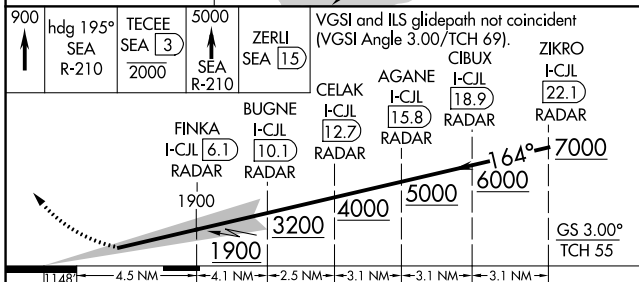
# ILS RWY 16R (SA CAT I)

SEATTLE-TACOMA INTL (SEA)

DME or RADAR required. From GRIFY: RNAV 1-GPS required.		ALSF-2 	MISSED APPROACH: Climb to 900 then climb on heading 195° and on SEA VORTAC R-210 to cross TECEE/SEA 3 DME/RADAR at or below 2000 then climb to 5000 on SEA VORTAC R-210 to ZERLI/SEA 15 DME/RADAR and hold, continue climb-in-hold to 5000.		
D-ATIS <b>118.0</b>	SEATTLE APP CON <b>133.65 273.45</b>		SEATTLE TOWER <b>119.9 239.3</b> (Rwys 16L, 16C, 34C, 34R) <b>120.95 239.3</b> (Rwys 16R, 34L)	GND CON <b>121.7</b>	CLNC DEL <b>128.0</b>



ELEV 432	<b>D</b>	TDZE 415
----------	----------	----------



CATEGORY	A	B	C	D
----------	---	---	---	---

S-ILS 16R	RA 176/14 150 DA 565			
-----------	----------------------	--	--	--

## SA CAT I ILS-SPECIAL AIRCREW & AIRCRAFT CERTIFICATION REQUIRED

NW-1, 09 SEP 2021 to 07 OCT 2021

NW-1, 09 SEP 2021 to 07 OCT 2021