

LOC/DME I-BEJ <b>110.75</b> Chan 44 (Y)	APP CRS <b>344°</b>	Rwy ldg TDZE <b>8500</b> <b>379</b> Apt Elev <b>433</b>
---	------------------------	---

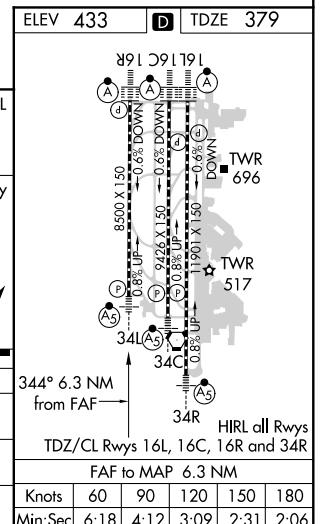
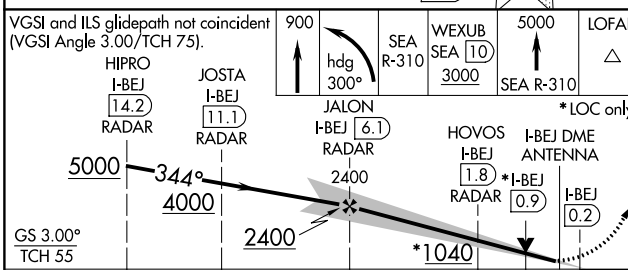
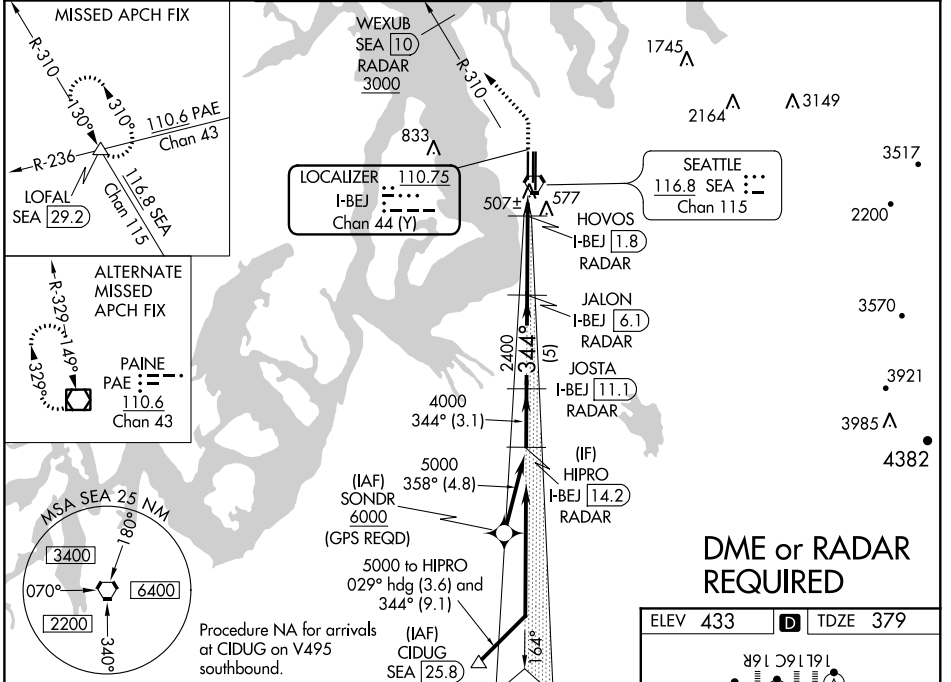
# ILS or LOC RWY 34L

SEATTLE-TACOMA INTL (SEA)

**MISSED APPROACH:** Climb to 900 then climbing left turn on heading 300° and on SEA VORTAC R-310 to cross WEXUB/10 DME/RADAR at or above 3000, then climb to 5000 on SEA VORTAC R-310 to LOFAL/SEA 29.2 DME and hold.

DME or RADAR required.  
Simultaneous approach authorized with Rwy 34R/C.  
# RVR 1800 authorized with use of FD or AP or HUD to DA.

D-ATIS <b>118.0</b>	SEATTLE APP CON <b>133.65 273.45</b>	SEATTLE TOWER <b>119.9 239.3</b> (Rwys 16L, 16C, 34C, 34R) <b>120.95 239.3</b> (Rwys 16R, 34L)	GND CON <b>121.7</b>	CLNC DEL <b>128.0</b>	CPDLC
------------------------	---	--	-------------------------	--------------------------	-------



VGSI and ILS glidepath not coincident (VGSI Angle 3.00/TCH 75).	900	SEA R-310	WEXUB SEA 10 3000	5000	LOFAL
HIPRO I-BEJ 14.2 RADAR	JOSTA I-BEJ 11.1 RADAR	JALON I-BEJ 6.1 RADAR	HOVOS I-BEJ 1.8 RADAR	I-BEJ DME ANTENNA I-BEJ 0.9	I-BEJ 0.2
GS 3.00° TCH 55	344°	300°	2400	1040	
	3.1 NM	5 NM	4.3 NM	0.9 NM	1 NM

SEATTLE, WASHINGTON Amdt 1F 26APR18	47°27'N-122°19'W	SEATTLE-TACOMA INTL (SEA) ILS or LOC RWY 34L
--	------------------	---

NW-1, 09 SEP 2021 to 07 OCT 2021

NW-1, 09 SEP 2021 to 07 OCT 2021