

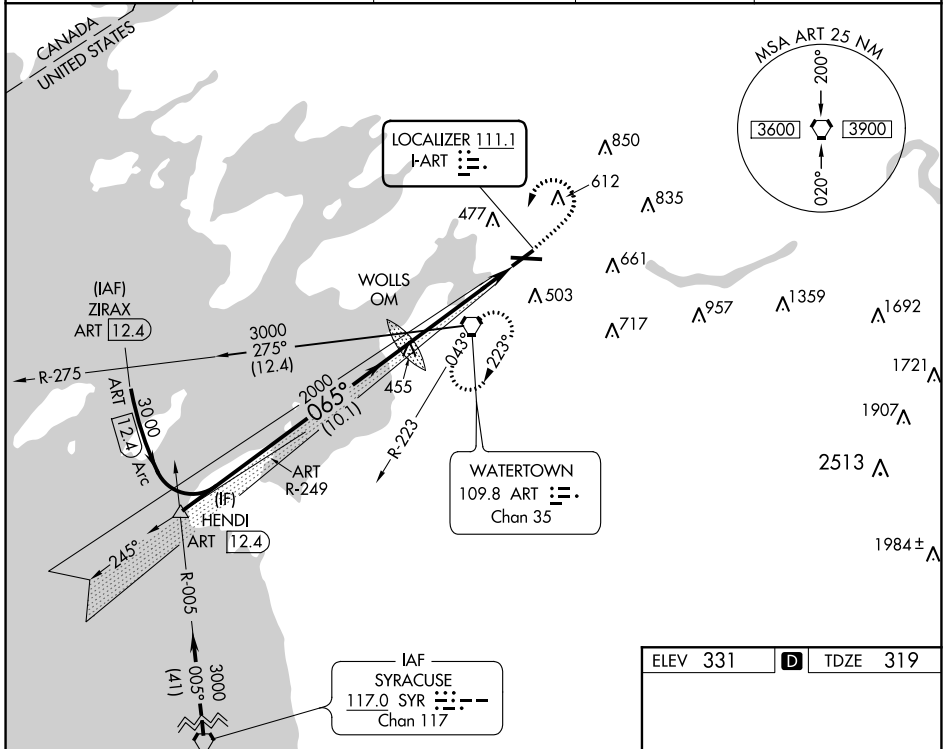
LOC I-ART <b>111.1</b>	APP CRS <b>065°</b>	Rwy Idg TDZE Apt Elev	<b>4784</b> <b>319</b> <b>331</b>
---------------------------	------------------------	-----------------------------	---

# ILS or LOC RWY 7

WATERTOWN INTL (ART)

		MISSED APPROACH: Climb to 900 then climbing left turn to 2400 direct ART VORTAC and hold.		
		ASOS <b>132.325</b>	GTB ATIS <b>119.525</b>	WHEELER-SACK APP CON <b>124.875 257.6</b>

UNICOM <b>123.0</b> (CTAF)
-------------------------------

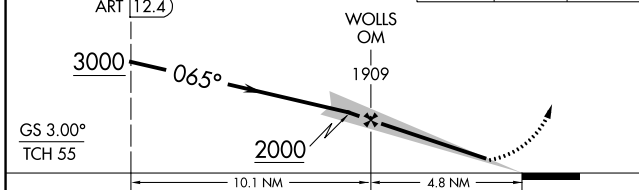


NE-2, 09 SEP 2021 to 07 OCT 2021

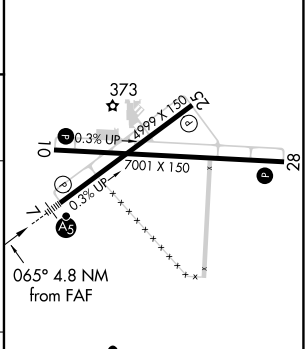
NE-2, 09 SEP 2021 to 07 OCT 2021

VGSI and ILS glidepath not coincident (VGSI Angle 3.00/TCH 52).

900	2400	ART



ELEV 331		TDZE 319
----------	--	----------



CATEGORY	A	B	C	D
S-ILS 7	519-½ 200 (200-½)			
S-LOC 7	760-½ 441 (500-½)		760-¾ 441 (500-¾)	
CIRCLING	960-1 629 (700-1)		980-1¾ 649 (700-1¾)	1080-2½ 749 (800-2½)

FAF to MAP 4.8 NM					
Knots	60	90	120	150	180
Min:Sec	4:48	3:12	2:24	1:55	1:36