

WAAS CH 42899 W10A	APP CRS 104°	Rwy Idg TDZE Apt Elev	8204 5516 5516
--	------------------------	-----------------------------	---

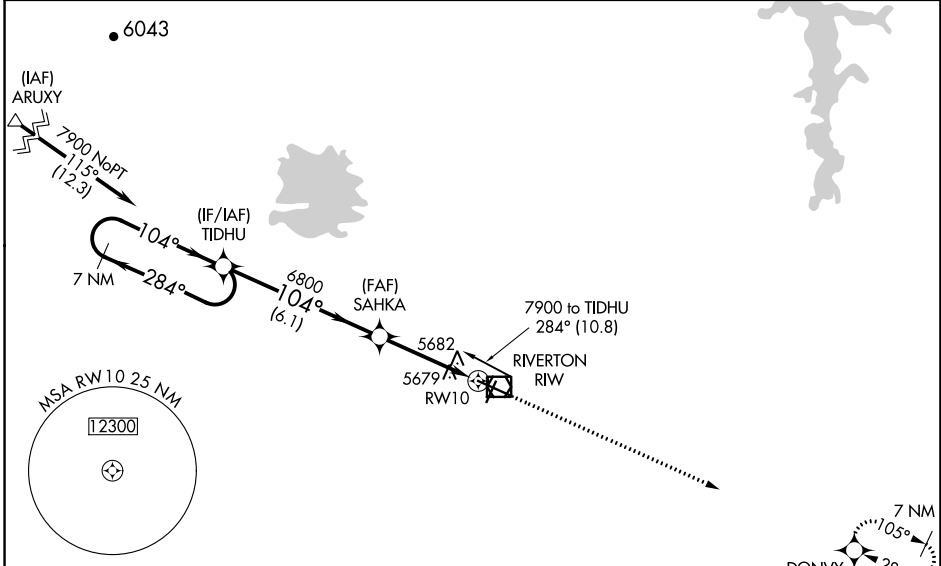
RNAV (GPS) RWY 10

CENTRAL WYOMING RGNL (RIW)

⚠ DME/DME RNP-0.3 NA. When local altimeter setting not received, use Lander altimeter setting and increase all DA 54 feet and all MDA 60 feet, and increase LPV and LNAV/VNAV all Cats visibility ¼ mile and increase LNAV Cat C/D visibility ½ mile. Baro-VNAV and VDP NA when using Lander altimeter setting. Rwy 10 helicopter visibility reduction below ¾ SM NA. For uncompensated Baro-VNAV systems, LNAV/VNAV NA below -27°C (-16°F) or above 48°C (118°F).

MISSED APPROACH: Climb to 8600 direct DONVY and hold.

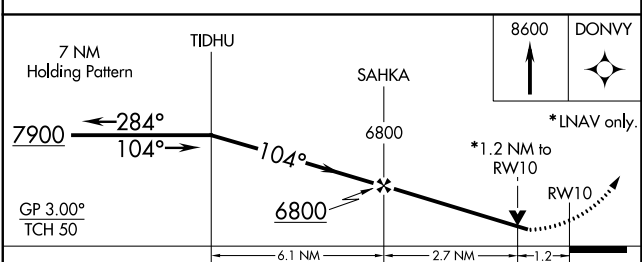
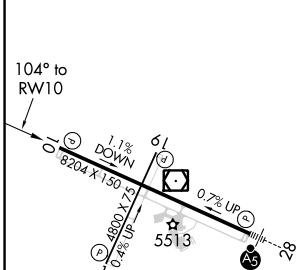
ASOS 121.425	SALT LAKE CENTER 133.25 285.6	UNICOM 122.8 (CTAF) 0
------------------------	---	---------------------------------



NW-1, 09 SEP 2021 to 07 OCT 2021

NW-1, 09 SEP 2021 to 07 OCT 2021

ELEV 5516	D	TDZE 5516
-----------	----------	-----------



CATEGORY	A	B	C	D
LPV DA		5902-1¼	386 (400-1¼)	
LNAV/VNAV DA		5965-1½	449 (500-1½)	
LNAV MDA	5940-1	424 (500-1)	5940-1¼	424 (500-1¼)
C CIRCLING	6000-1	484 (500-1)	6000-1½	6120-2 604 (700-2)

REIL Rwy 1, 10 and 19 **0**
MIRL Rwy 1-19 **0**
HIRL Rwy 10-28 **0**