

WAAS CH 70405 W18A	APP CRS 185°	Rwy Idg TDZE Apt Elev 6499 813 813
--	------------------------	--

RNAV (GPS) RWY 18

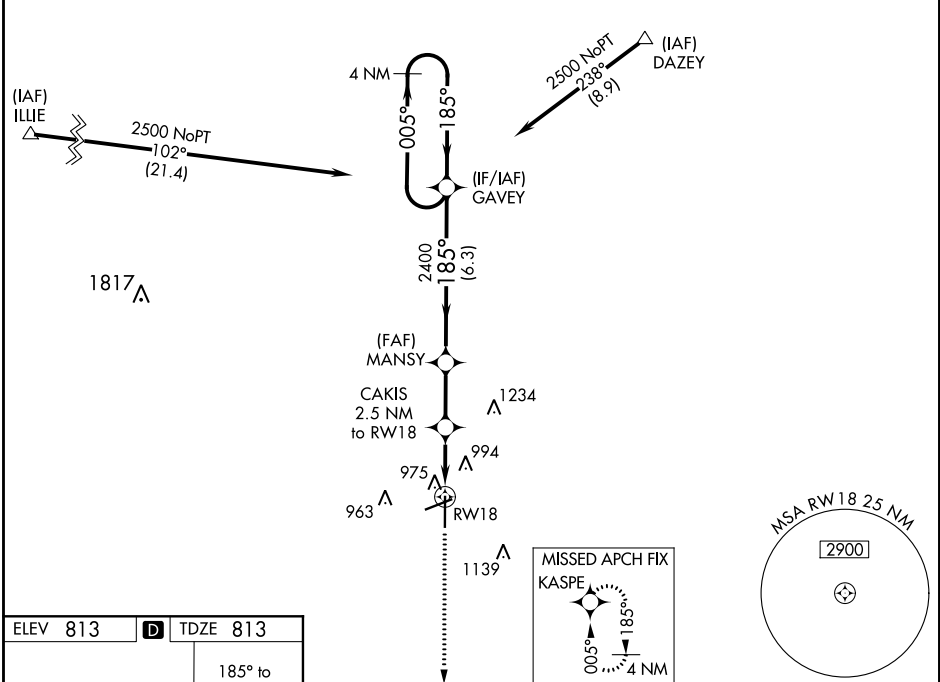
FINDLAY (F'DY)

RNP APCH

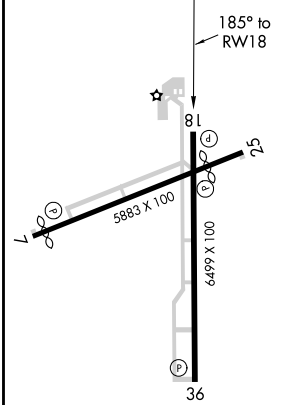
▼ For uncompensated Baro-VNAV systems, LNAV/VNAV NA below -16°C or above 47°C. Baro-VNAV and VDP NA when using Lima Allen County altimeter setting. When local altimeter setting not received, use Lima Allen County altimeter setting; increase all DAs/MDAs 80 feet; increase LNAV Cat C/D and Circling Cat C/D visibility ¼ SM.

MISSED APPROACH:
Climb to 2600 direct
KASPE and hold.

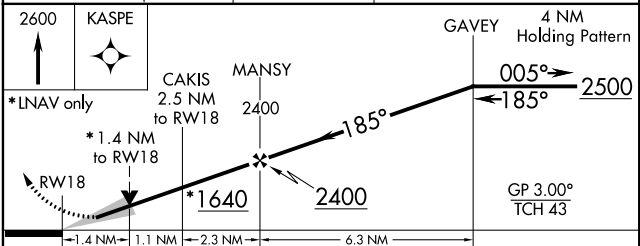
ASOS 132.85	TOLEDO APP CON 120.8 317.55	UNICOM 122.725 (CTAF) 0
-----------------------	---------------------------------------	-----------------------------------



ELEV 813	D	TDZE 813
----------	----------	----------



HIRL Rwy 7-25 and 18-36 **0**
REIL Rwy 7, 25 and 36 **0**



CATEGORY	A	B	C	D
LPV DA	1063-1 250 (300-1)			
LNAV/VNAV DA	1320-1¾ 507 (600-1¾)			
LNAV MDA	1300-1	487 (500-1)	1300-1⅜ 487 (500-1⅜)	1300-1½ 487 (500-1½)
CIRCLING	1440-1	627 (700-1)	1440-1¾ 627 (700-1¾)	1440-2 627 (700-2)

EC-2, 09 SEP 2021 to 07 OCT 2021

EC-2, 09 SEP 2021 to 07 OCT 2021