

WAAS CH <b>56405</b> <b>W25A</b>	APP CRS <b>254°</b>	Rwy Idg TDZE <b>812</b> Apt Elev <b>813</b>
--	------------------------	---

# RNAV (GPS) RWY 25

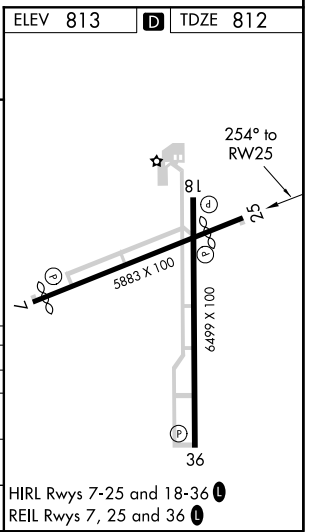
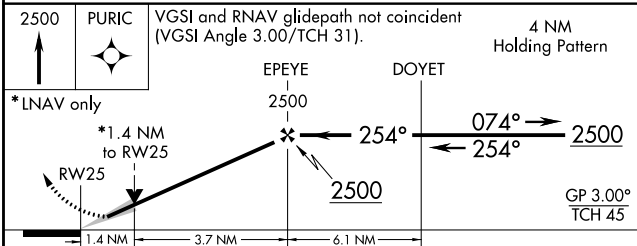
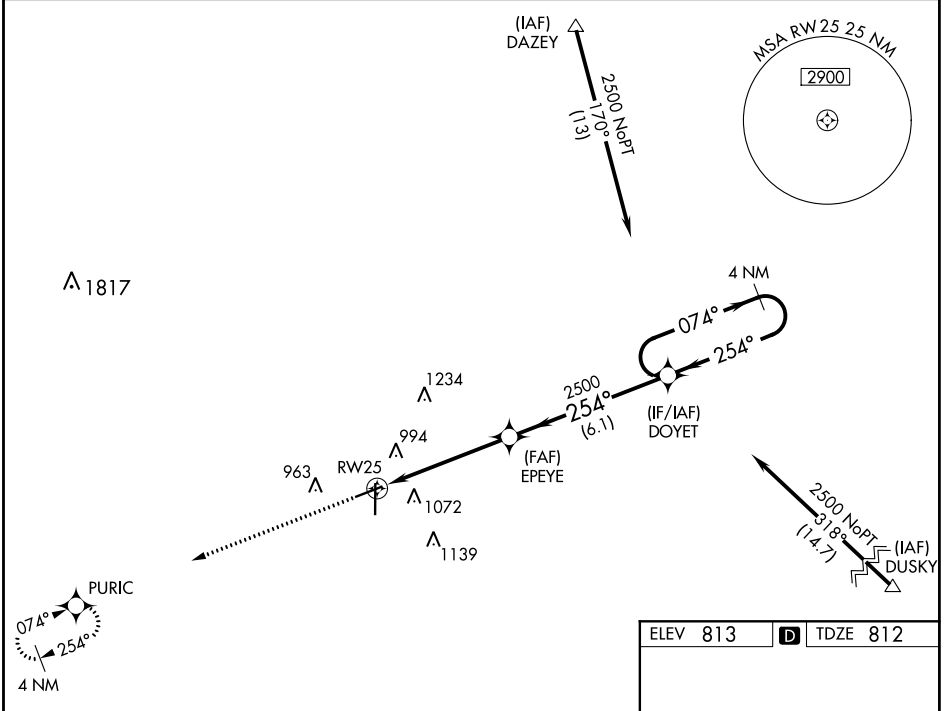
FINDLAY (FDY)

**RNP APCH**

▼ For uncompensated Baro-VNAV systems, LNAV/VNAV NA below -16°C or above 47°C. Baro-VNAV and VDP NA when using Lima Allen County altimeter setting. When local altimeter setting not received, use Lima Allen County altimeter setting: increase all DAs/MDAs 80 feet; increase LPV visibility 1/8 SM all Cats; increase LNAV Cat C/D and Circling Cat C/D visibility 1/4 SM.

MISSED APPROACH: Climb to 2500 direct PURIC and hold.

ASOS <b>132.85</b>	TOLEDO APP CON <b>120.8 317.55</b>	UNICOM <b>122.725 (CTAF) 0</b>
-----------------------	---------------------------------------	-----------------------------------



CATEGORY	A	B	C	D
LPV DA	1116-1		304 (400-1)	
LNAV/VNAV DA	1411-2		599 (600-2)	
LNAV MDA	1280-1	468 (500-1)	1280-1 1/8 468 (500-1 3/8)	1280-1 1/2 468 (500-1 1/2)
CIRCLING	1440-1	627 (700-1)	1440-1 3/4 627 (700-1 3/4)	1440-2 627 (700-2)

HIRL Rwy 7-25 and 18-36 0  
REIL Rwy 7, 25 and 36 0

EC-2, 09 SEP 2021 to 07 OCT 2021

EC-2, 09 SEP 2021 to 07 OCT 2021