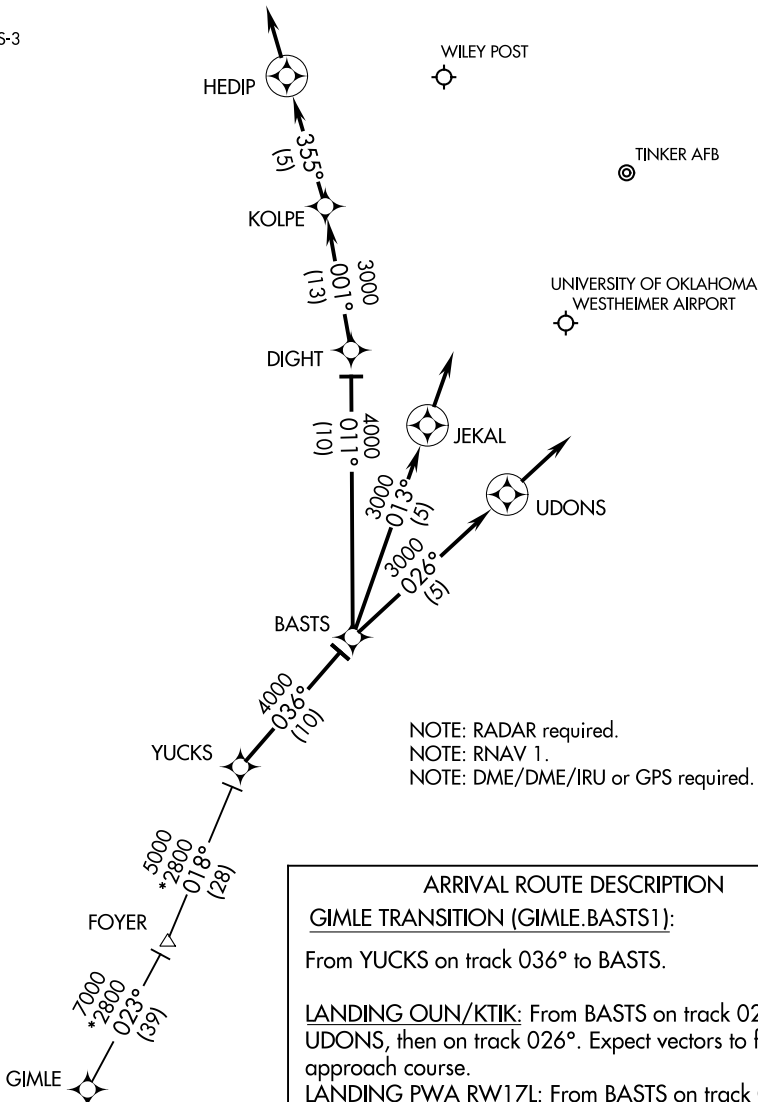


BASTS ONE ARRIVAL (RNAV)

OKLAHOMA CITY, OKLAHOMA

OKE CITY APP CON
 124.6 266.8
 KTIK ATIS ★
 270.1
 OUN AWOS-3
 119.55
 PWA ATIS
 128.725



NOTE: RADAR required.
 NOTE: RNAV 1.
 NOTE: DME/DME/IRU or GPS required.

ARRIVAL ROUTE DESCRIPTION

GIMLE TRANSITION (GIMLE.BASTS1):

From YUCKS on track 036° to BASTS.

LANDING OUN/KTIK: From BASTS on track 026° to UDONS, then on track 026°. Expect vectors to final approach course.

LANDING PWA RW17L: From BASTS on track 011° to DIGHT, then on track 001° to KOLPE, then on track 355° to HEDIP, then on track 355°. Expect vectors to final approach course.

LANDING PWA RW35R: From BASTS on track 013° to JEKAL, then on track 013°. Expect vectors to final approach course.

NOTE: Chart not to scale.

BASTS ONE ARRIVAL (RNAV)

(YUCKS.BASTS1) 24JUL14

OKLAHOMA CITY, OKLAHOMA

SC-1, 09 SEP 2021 to 07 OCT 2021

SC-1, 09 SEP 2021 to 07 OCT 2021