

HI-VOR or TACAN RWY 17R

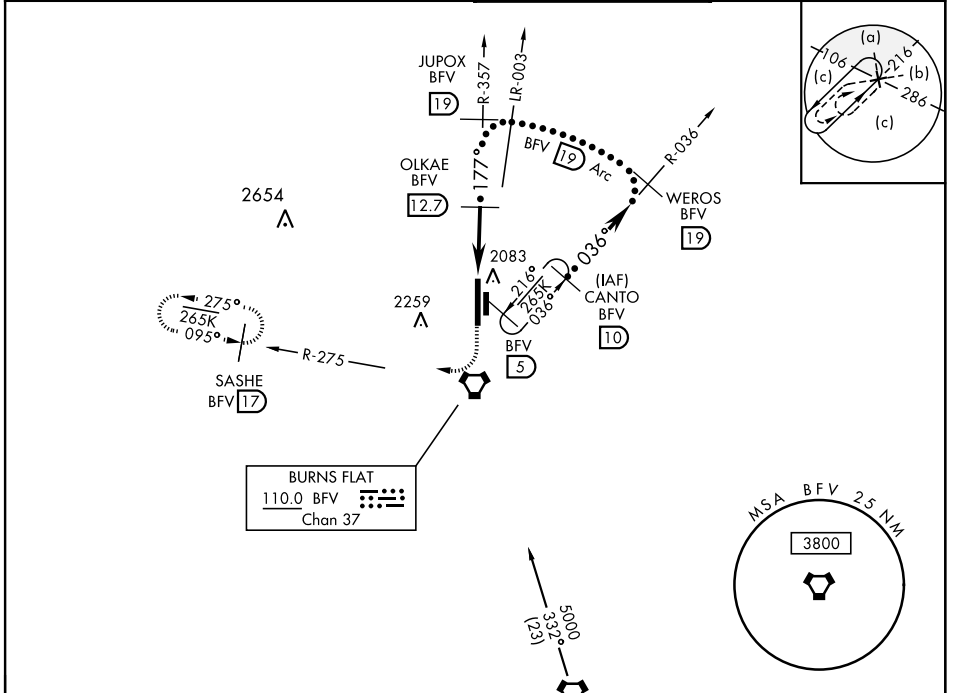
VORTAC BFV 110.0 Chan 37	APCH CRS 177°	Rwy Idg 13,503 TDZE 1922 Arprt Elev 1922	AL-778 [USAF]	CLINTON-SHERMAN (KCSM)
--	-------------------------	---	---------------	------------------------

DME required.

* Circling not authorized E of Rwy 17R-35L.

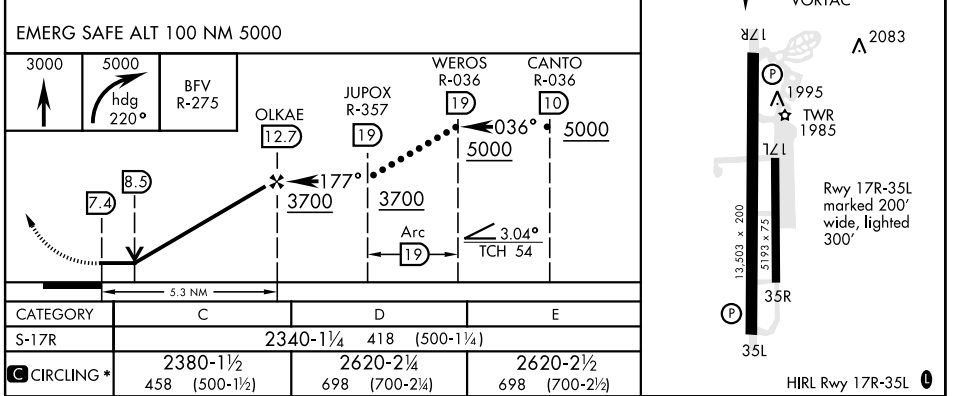
MISSED APPROACH: Climb to 3000 then climbing right turn to 5000 via heading 220° and BFV R-275 to SASHE/17 DME and hold.

ASOS 118.45	FORT WORTH CENTER 128.4 269.375	TOWER ★ 119.6 (CTAF) 0 256.9	GND CON 121.7 239.0
-----------------------	---	--	-------------------------------



ELEV 1922	TDZE 1922
-----------	-----------

177° to VORTAC



HI-VOR or TACAN RWY 17R

SC-1, 09 SEP 2021 to 07 OCT 2021

SC-1, 09 SEP 2021 to 07 OCT 2021