

LOC I-BLF 109.5	APP CRS 229°	Rwy Idg 4743
		TDZE 2857
		Apt Elev 2857

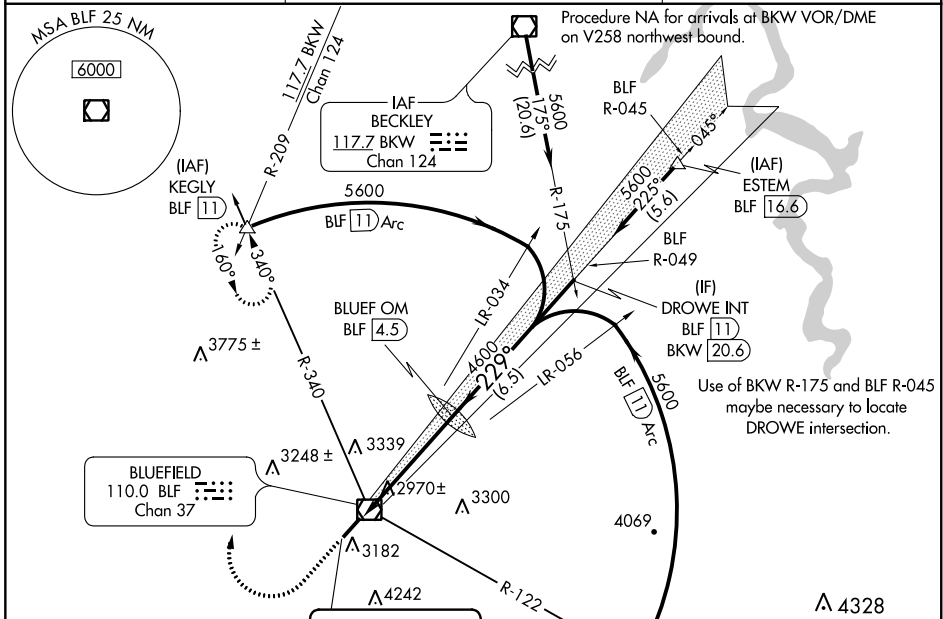
ILS or LOC RWY 23

MERCER COUNTY (BLF)

⚠ Autopilot coupled approach NA below 3600 MSL. When local altimeter setting not received, use Beckley altimeter setting and increase all DA 443 feet and all MDA 460 feet; increase S-ILS 23 all Cats visibility 2½ mile and S-LOC 23 Cat A visibility 1¼ mile, Cat B to 1½ mile and Cats C and D to 3 miles. Circling NA southeast of Rwy 5-23.

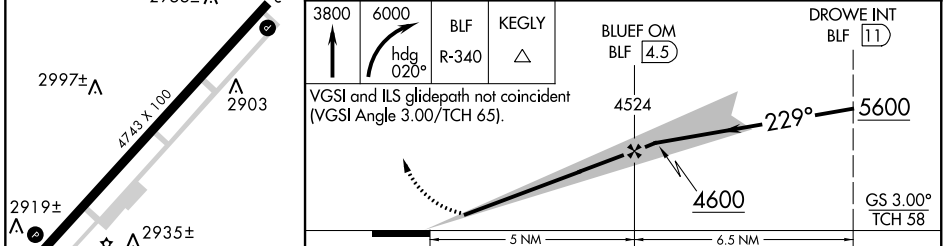
MISSED APPROACH: Climb to 3800 then climbing right turn to 6000 on heading 020° and BLF VOR/DME R-340 to KEGLY INT/BLF 11 DME and hold.

ASOS 132.725	INDIANAPOLIS CENTER 126.575 257.85	CTAF 122.9
------------------------	--	----------------------



ELEV 2857	D	TDZE 2857
229° 5 NM from FAF		
2890± A		
2955± A		
2997± A		
2919± A		
2913		
2935± A		
2903 A		
4743 x 100		
HIRL Rwy 5-23		
REIL Rwys 5 and 23		

LOCALIZER 109.5
I-BLF
3519 A



	A	B	C	D
S-ILS 23		3157-1	300 (300-1)	3157-7/8 300 (300-7/8)
S-LOC 23	3520-1	663 (700-1)	3520-1 3/4 663 (700-1 1/2)	3520-2 663 (700-2)
CIRCLING	3520-1	663 (700-1)	3560-2 703 (800-2)	3560-2 1/4 703 (800-2 1/4)

NE-4, 09 SEP 2021 to 07 OCT 2021

NE-4, 09 SEP 2021 to 07 OCT 2021