

# RNAV (GPS) RWY 5

MERCER COUNTY (BLF)

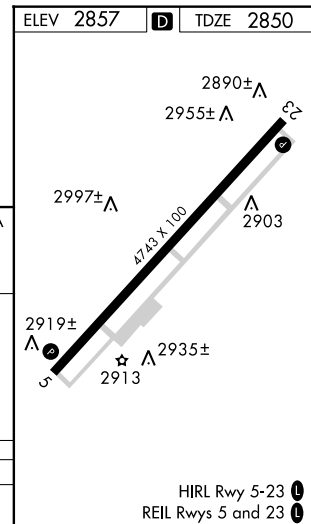
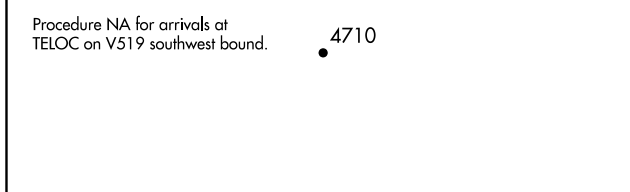
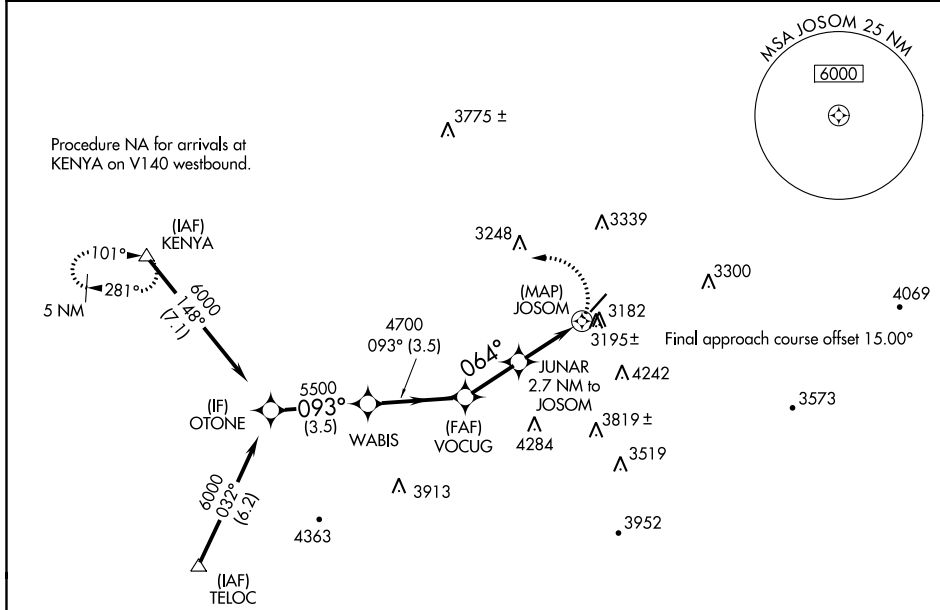
APP CRS <b>064°</b>	Rwy Idg <b>4743</b>
	TDZE <b>2850</b>
	Apt Elev <b>2857</b>

RNP APCH.

**Procedure NA at night.**  
Rwy 5 helicopter visibility reduction below 1 SM NA.

MISSED APPROACH: Climbing left turn to 6000 direct KENYA and hold.

ASOS <b>132.725</b>	INDIANAPOLIS CENTER <b>126.575 257.85</b>	CTAF <b>122.9</b>
------------------------	--	----------------------



OTONE	WABIS		VOCUG	JUNAR 2.7 NM to JOSOM	JOSOM	KENYA
6000	5500	4700	3940			
3.5 NM	3.5 NM	2.3 NM	2.7 NM	0.5		
CATEGORY	A	B	C	D		
LNAV MDA	3560-1	710 (800-1)	3560-2	3560-2 1/4		
			710 (800-2)	710 (800-2 1/4)		

NE-4, 09 SEP 2021 to 07 OCT 2021

NE-4, 09 SEP 2021 to 07 OCT 2021