

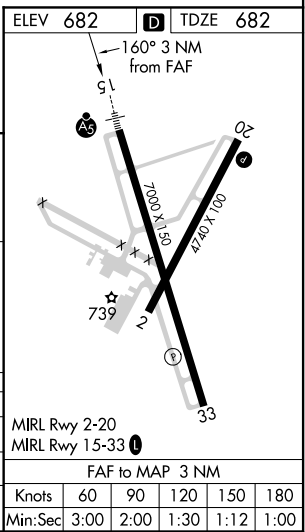
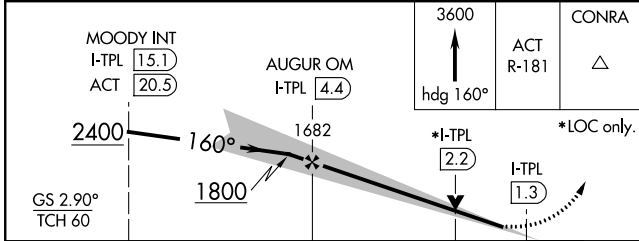
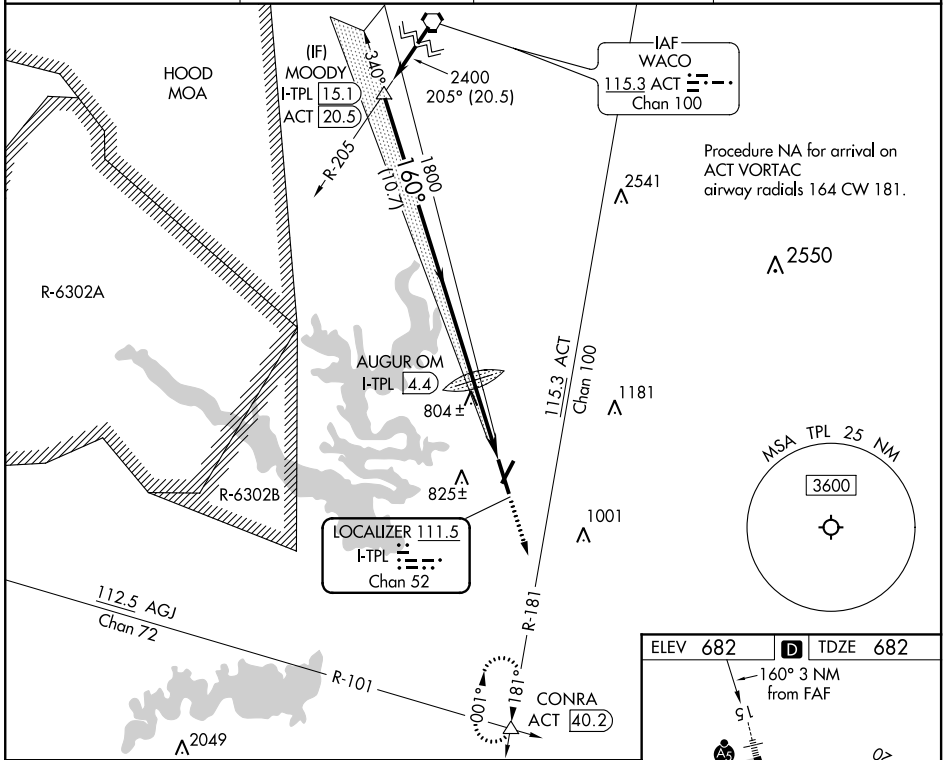
LOC/DME I-TPL <b>111.5</b> Chan 52	APP CRS <b>160°</b>	Rwy Idg <b>6301</b> TDZE <b>682</b> Apt Elev <b>682</b>
--	------------------------	---

# ILS or LOC RWY 15

DRAUGHON-MILLER CENTRAL TEXAS RGNL (TPL)

<p>Autopilot coupled approach NA below 990. For inop ALS, increase S-LOC 15 Cats C/D visibility to 1 SM.</p>	<p>MALSR AS</p>	<p>MISSED APPROACH: Climb to 3600 on heading 160° and an ACT VORTAC R-181 to CONRA INT/ACT 40.2 DME and hold, continue climb-in-hold to 3600.</p>
--	---------------------	---

AWOS-3PT <b>134.975</b>	GRAY APP CON <b>120.075 370.0</b>	CLNC DEL <b>125.9</b>	UNICOM <b>123.0 (CTAF) 0</b>
----------------------------	--------------------------------------	--------------------------	---------------------------------



CATEGORY	A	B	C	D
S-ILS 15		882-½	200 (200-½)	
S-LOC 15	1060-½	378 (400-½)	1060-¾	378 (400-¾)
CIRCLING	1120-1 438 (500-1)	1180-1 498 (500-1)	1280-1½ 598 (600-½)	1420-2¼ 738 (800-2¼)

SC-3, 09 SEP 2021 to 07 OCT 2021

SC-3, 09 SEP 2021 to 07 OCT 2021