

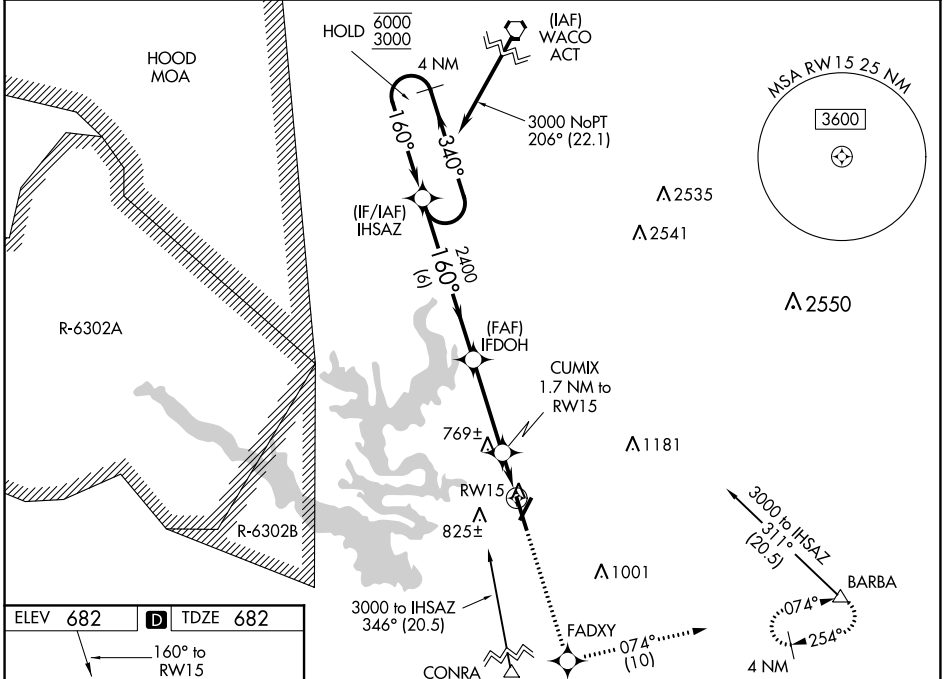
WAAS Ch <b>78101</b> <b>W15A</b>	APP CRS <b>160°</b>	Rwy Idg TDZE Apt Elev	<b>6301</b> <b>682</b> <b>682</b>
--	------------------------	-----------------------------	---

# RNAV (GPS) RWY 15

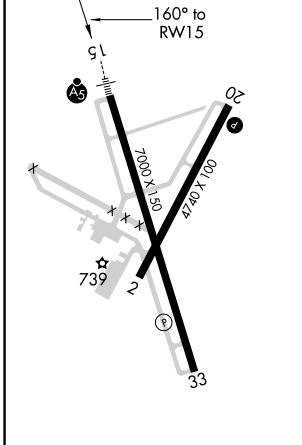
DRAUGHON-MILLER CENTRAL TEXAS RGNL (TPL)

RNP APCH. ⚠ For uncompensated Baro-VNAV systems, LNAV/VNAV NA below -16°C or above 54°C. For inop ALS, increase LNAV/VNAV all Cats and LNAV Cats C visibility to 1 SM.	MALSR 	MISSED APPROACH: Climb to 3600 direct FADXY and on track 074° to BARBA and hold, continue climb-in-hold to 3600.
---	-----------	--

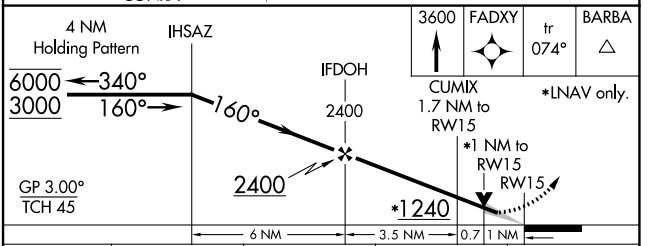
AWOS-3PT <b>134.975</b>	GRAY APP CON <b>120.075 370.0</b>	CLNC DEL <b>125.9</b>	UNICOM <b>123.0</b> (CTAF)
----------------------------	--------------------------------------	--------------------------	-------------------------------



ELEV <b>682</b>	<b>D</b> TDZE <b>682</b>
-----------------	--------------------------



MIRL Rwy 2-20  
MIRL Rwy 15-33



CATEGORY	A	B	C	D
LPV DA	882-½ 200 (200-½)			
LNAV/VNAV DA	1025-¾ 343 (400-¾)			
LNAV MDA	1040-½	358 (400-½)	1040-⅝ 358 (400-⅝)	1040-1 358 (400-1)
<b>C</b> CIRCLING	1120-1 438 (500-1)	1180-1 498 (500-1)	1280-1½ 598 (600-1½)	1420-2¼ 738 (800-2¼)

SC-3, 09 SEP 2021 to 07 OCT 2021

SC-3, 09 SEP 2021 to 07 OCT 2021