


LOC I-BVO 111.3	APP CRS 176°	Rwy ldg 6201
		TDZE 694
		Apt Elev 717

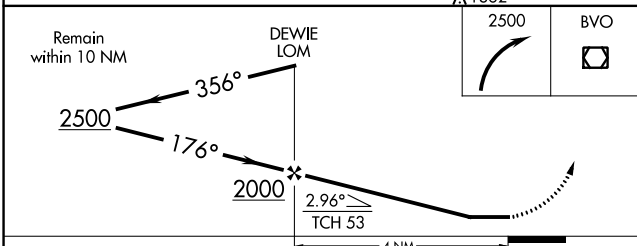
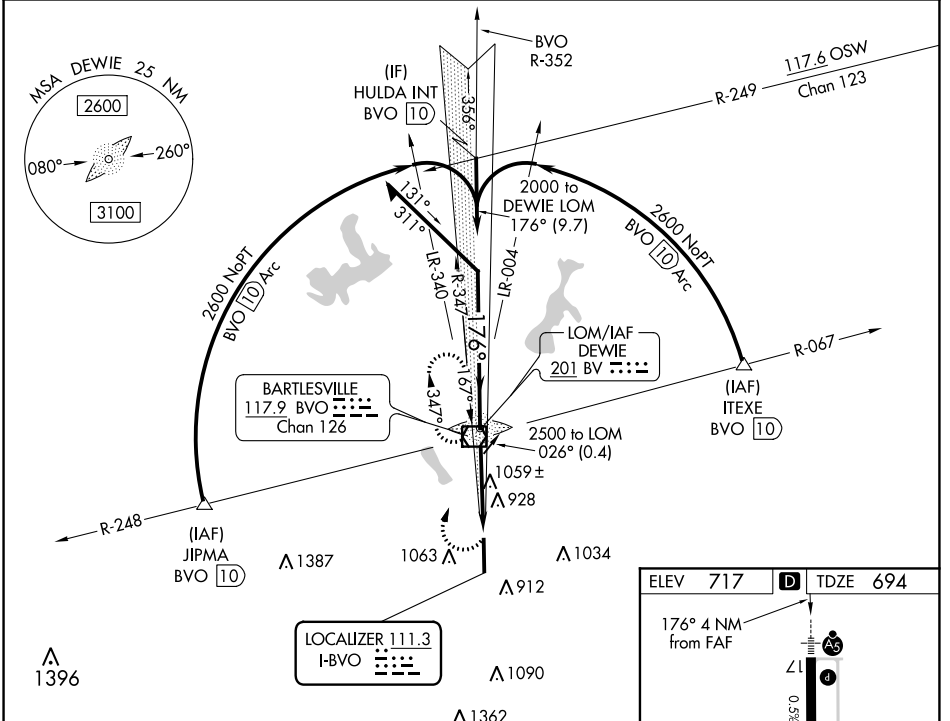
LOC RWY 17

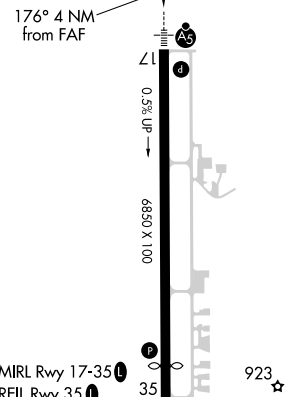
BARTLESVILLE MUNI (BVO)

NA When local altimeter setting not received, use Tulsa Intl altimeter setting and increase all MDA 100 feet, increase S-17 and Circling Cat C visibility ¼ mile. For inop MALSR, increase S-17 Cat A/B visibility to 1 mile and Cat C to 1 ¼ mile. For inop MALSR when using Tulsa Intl altimeter setting, increase S-17 Cat A/B visibility to 1 mile and Cat C to 2 mile. Circling NA east of Rwy 17-35. Helicopter visibility reduction below ¾ SM NA.

MALSR

MISSED APPROACH: Climbing right turn to 2500 direct BVO VOR/DME and hold, continue climb-in-hold to 2500.

AWOS 132.675	KANSAS CITY CENTER 128.8 354.1	UNICOM 122.825 (CTAF) 0
------------------------	--	-----------------------------------



ELEV 717	D TDZE 694
176° 4 NM from FAF	
	
MIRL Rwy 17-35 0	923 ☆
REL Rwy 35 0	35
FAF to MAP 4 NM	
Knots	60 90 120 150 180
Min:Sec	4:00 2:40 2:00 1:36 1:20

CATEGORY	A	B	C	D
S-17	1320-¾	626 (700-¾)	1320-1⅞ 626 (700-1⅞)	NA
C CIRCLING	1380-1	663 (700-1)	1400-2 683 (700-2)	NA

SC-1, 09 SEP 2021 to 07 OCT 2021

SC-1, 09 SEP 2021 to 07 OCT 2021