

| | | |
|--|------------------------|---|
| WAAS CH 61305 W35A | APP CRS 356° | Rwy Idg 6201 TDZE 712 Apt Elev 717 |
|--|------------------------|---|

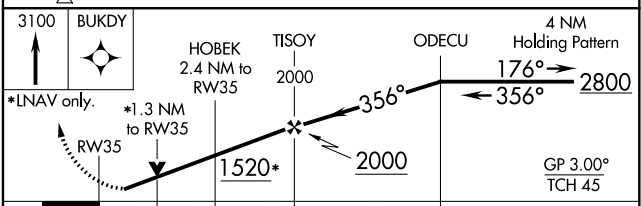
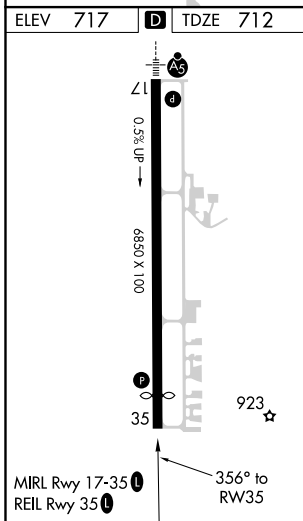
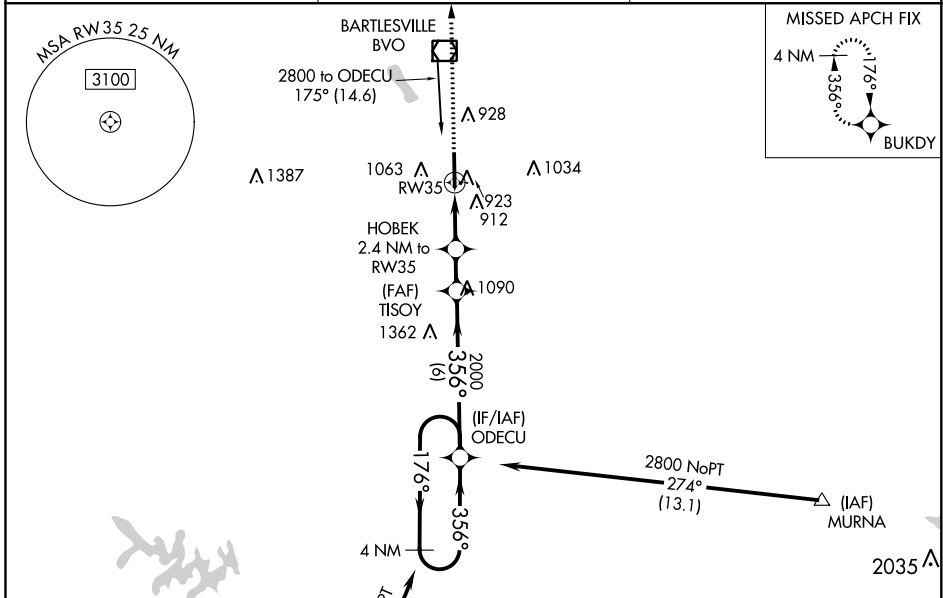
RNAV (GPS) RWY 35

BARTLESVILLE MUNI (BVO)

⚠ For uncompensated Baro-VNAV systems, LNAV/VNAV NA below -18°C (0°F) or above 54°C (130°F).
⚠ DME/DME RNP-0.3 NA. When local altimeter setting not received, use Tulsa Intl altimeter setting and increase all DA 85 feet and all MDA 100 feet, increase LPV all Cats visibility ¼ mile, LNAV/VNAV all Cats visibility ⅓ mile, LNAV and Circling Cat C visibility ¼ mile. Circling NA east of Rwy 17-35. Baro-VNAV and VDP NA when using Tulsa Intl altimeter setting. Helicopter visibility reduction below ¾ SM NA.

MISSED APPROACH:
Climb to 3100 direct BUKDY and hold.

| | | |
|-------------------------------|---|--|
| AWOS 132.675 | KANSAS CITY CENTER 128.8 354.1 | UNICOM 122.825 (CTAF) 0 |
|-------------------------------|---|--|



| CATEGORY | A | B | C | D |
|-------------------|------------|-----------------|-----------------------------|----|
| LPV DA | 968-7/8 | 256 (300-7/8) | | NA |
| LNAV/VNAV DA | 1161-1 1/2 | 449 (500-1 1/2) | | NA |
| LNAV MDA | 1180-1 | 468 (500-1) | 1180-3/8 468 (500-1 3/8) | NA |
| C CIRCLING | 1380-1 | 663 (700-1) | 1400-2 683 (700-2) | NA |

SC-1, 09 SEP 2021 to 07 OCT 2021

SC-1, 09 SEP 2021 to 07 OCT 2021