


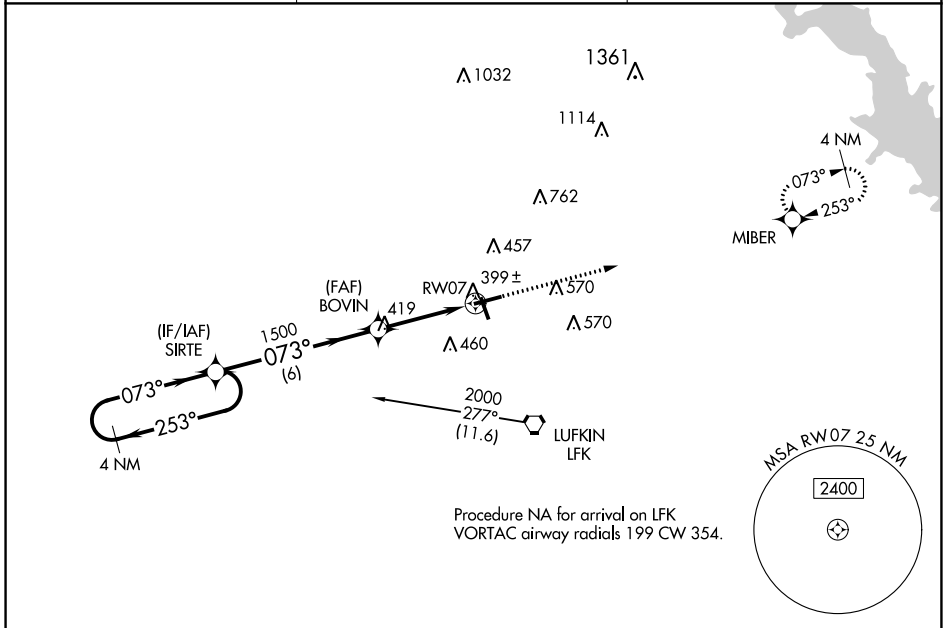
WAAS CH <b>50105</b> <b>W07A</b>	APP CRS <b>073°</b>	Rwy Idg TDZE Apt Elev	<b>5400</b> <b>287</b> <b>296</b>
--	------------------------	-----------------------------	---

# RNAV (GPS) RWY 7

ANGELINA COUNTY (L.F.K)

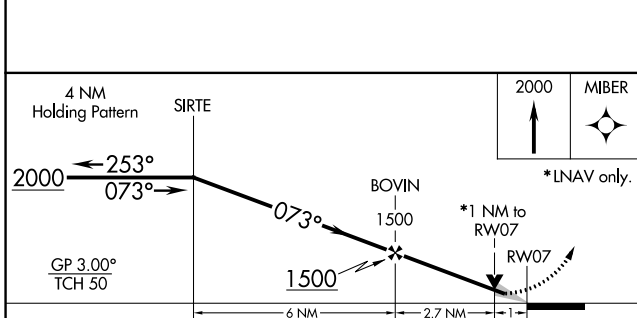
▼ For uncompensated Baro-VNAV systems, LNAV/VNAV NA below -4°C (25°F) or above 54°C (130°F). DME/DME RNP-0.3 NA. Circling Rwy 16, 25 NA at night.
 
 MALSR  MISSED APPROACH: Climb to 2000 direct MIBER and hold.

ASOS <b>120.625</b>	HOUSTON CENTER <b>125.175 285.575</b>	UNICOM <b>123.0 (CTAF) 0</b>
------------------------	--	---------------------------------

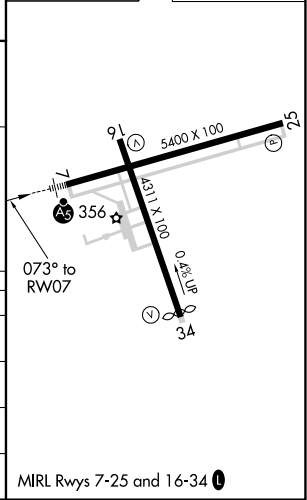



SC-5, 09 SEP 2021 to 07 OCT 2021

SC-5, 09 SEP 2021 to 07 OCT 2021



ELEV 296	TDZE 287
----------	----------



CATEGORY	A	B	C	D
LPV DA		537-½	250 (300-½)	
LNAV/VNAV DA		563-½	276 (300-½)	
LNAV MDA	660-½	373 (400-½)	660-⅝	373 (400-⅝)
 CIRCLING	740-1 444 (500-1)	760-1 464 (500-1)	880-1½ 584 (600-1½)	1140-2¾ 844 (900-2¾)

MIRL Rwy 7-25 and 16-34 0