

APP CRS <b>007°</b>	Rwy Idg TDZE Apt Elev	<b>N/A</b> <b>N/A</b> <b>4862</b>
------------------------	-----------------------------	---

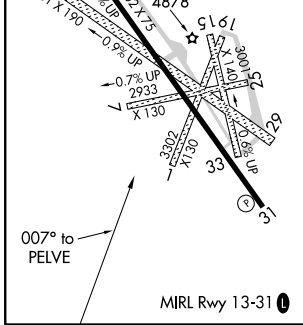
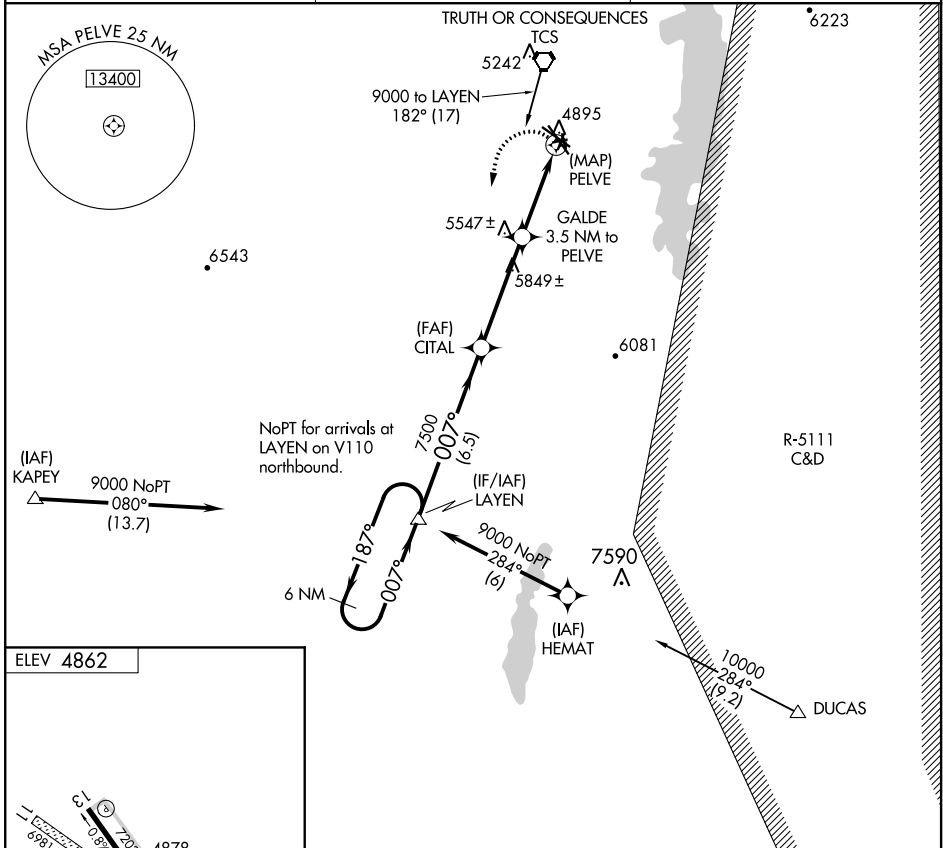
# RNAV (GPS)-A

TRUTH OR CONSEQUENCES MUNI (TCS)

**▽** GPS or RNP-0.3 required. DME/DME RNP-0.3 NA.  
**△** NA DUCAS transition NA when R-5111 A-D active.  
 Circling NA to Rwy 1, 7, 11, 15, 19, 25, 29 and 33.

MISSED APPROACH: Climbing left turn to 9000 direct LAYEN WP and hold.

ASOS <b>120.675</b>	ALBUQUERQUE CENTER <b>128.2 285.5</b>	UNICOM <b>122.8 (CTAF) 0</b>
------------------------	--	---------------------------------



	6 NM Holding Pattern	LAYEN	CITAL	GALDE 3.5 NM to PELVE	PELVE
		9000	7500	6200	
		187°	007°	007°	
		6.5 NM	4.2 NM	3.5 NM	
CATEGORY	A	B	C	D	
CIRCLING	5280-1 418 (500-1)	5320-1 458 (500-1)	5340-1½ 478 (500-1½)	5420-2 558 (600-2)	

SW-1, 09 SEP 2021 to 07 OCT 2021

SW-1, 09 SEP 2021 to 07 OCT 2021