

VOR/DME SMO 110.8 Chan 45	APP CRS 212°	Rwy Idg TDZE Apt Elev	N/A N/A 170
--	------------------------	-----------------------------	--------------------------

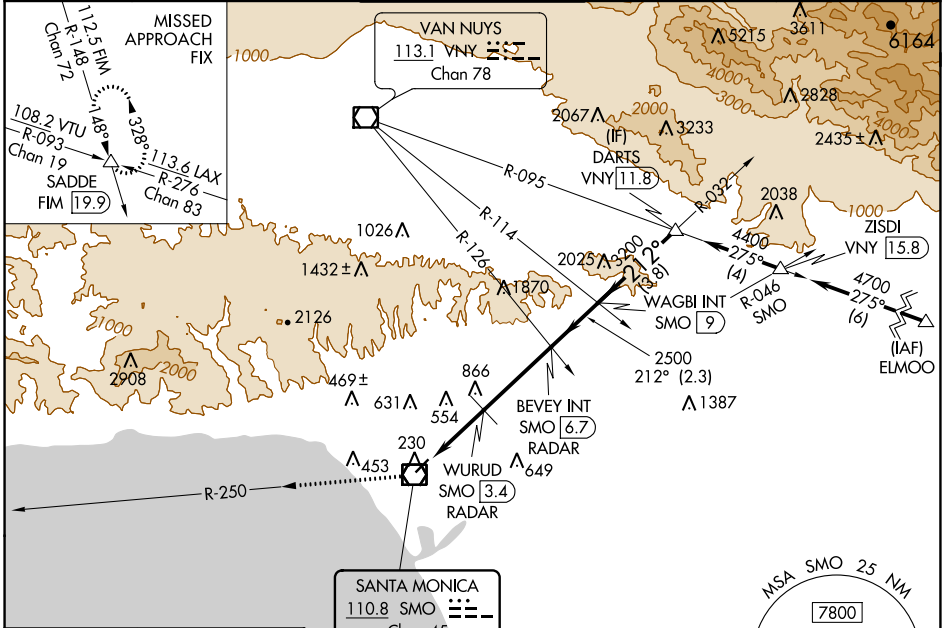
VOR-A

SANTA MONICA MUNI (SMO)

NA Procedure NA for arrivals at ELMOO on V186 southeast bound. Circling NA northwest of Rwy 3-21.

MISSED APPROACH: Climb to 5000 on SMO VOR/DME R-250 and on FIM VORTAC R-148 to SADDE INT/19.9 DME and hold, continue climb-in-hold to 5000.

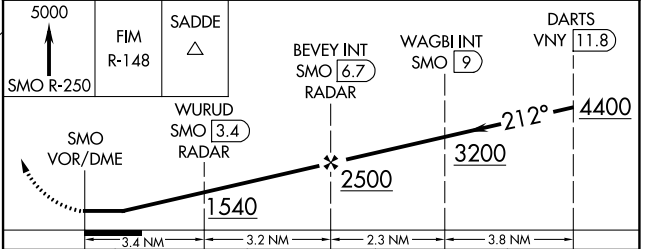
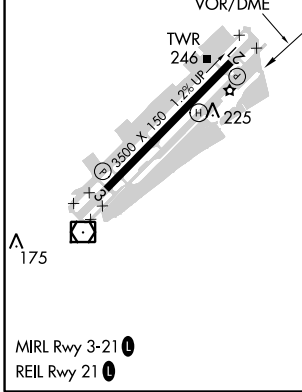
ATIS 119.15	SOCAL APP CON 128.5 235.975	SANTA MONICA TOWER * 120.1 (CTAF) 257.8	GND CON 121.9	UNICOM 122.95
-----------------------	---------------------------------------	---	-------------------------	-------------------------



SW-3, 09 SEP 2021 to 07 OCT 2021

SW-3, 09 SEP 2021 to 07 OCT 2021

ELEV 170	D
----------	----------



CATEGORY	A	B	C	D
C CIRCLING	1540-1¼ 1370 (1400-1¼)	1540-1½ 1370 (1400-1½)	1540-3	1370 (1400-3)
WURUD FIX MINIMUMS				
C CIRCLING	860-1	690 (700-1)	1180-3	1010 (1100-3)