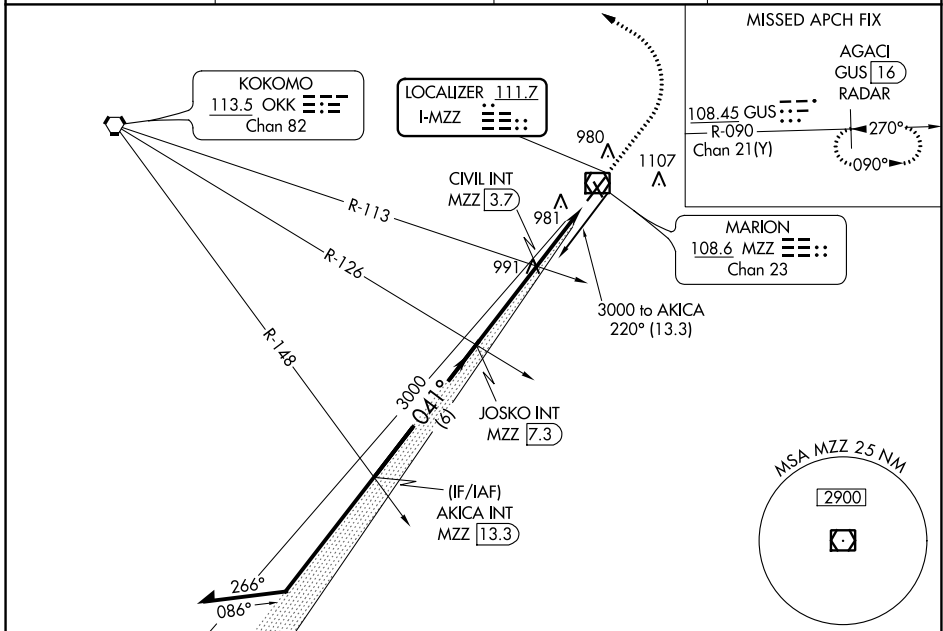


LOC I-MZZ <b>111.7</b>	APP CRS <b>041°</b>	Rwy Idg TDZE Apt Elev	<b>6011</b> <b>858</b> <b>859</b>
---------------------------	------------------------	-----------------------------	---

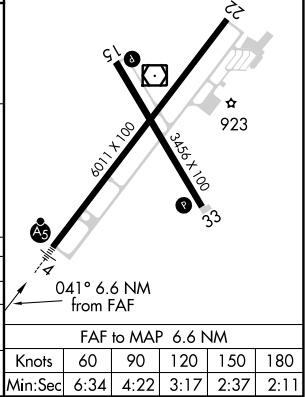
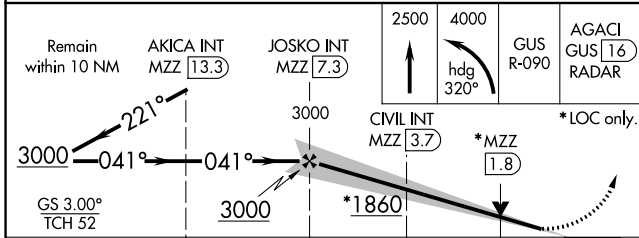
# ILS or LOC RWY 4

MARION MUNI - MCKINNEY FLD (MZZ)

DME required. ▼ DME from MZZ VOR/DME. ▲ NA Simultaneous reception of I-MZZ and MZZ DME required.		MALSR ⬆️	MISSED APPROACH: Climb to 2500 then climbing left turn to 4000 on heading 320° to intercept GUS VORTAC R-090 to AGACI/GUS VORTAC 16 DME/RADAR and hold.
AWOS-3 <b>108.6</b>	GRISSOM APP CON ★ <b>121.05 338.275</b>	CLNC DEL <b>120.0</b>	UNICOM <b>122.7</b> (CTAF) 0



ELEV 859	TDZE 858
HIRL Rwy 4-22	MIRL Rwy 15-33
REIL Rwy 15, 22, and 33	



CATEGORY	A	B	C	D
S-ILS 4		1058-½	200 (200-½)	
S-LOC 4		1260-½	402 (500-½)	
CIRCLING	1300-1 441 (500-1)	1320-1 461 (500-1)	1400-1½ 541 (600-1½)	1500-2 641 (700-2)

EC-2, 09 SEP 2021 to 07 OCT 2021

EC-2, 09 SEP 2021 to 07 OCT 2021