

WAAS CH <b>56415</b> <b>W30A</b>	APP CRS <b>298°</b>	Rwy ldg TDZE Apt Elev	<b>5320</b> <b>919</b> <b>919</b>
--	------------------------	-----------------------------	---

# RNAV (GPS) RWY 30

ANDERSON MUNI-DARLINGTON FLD (AID)

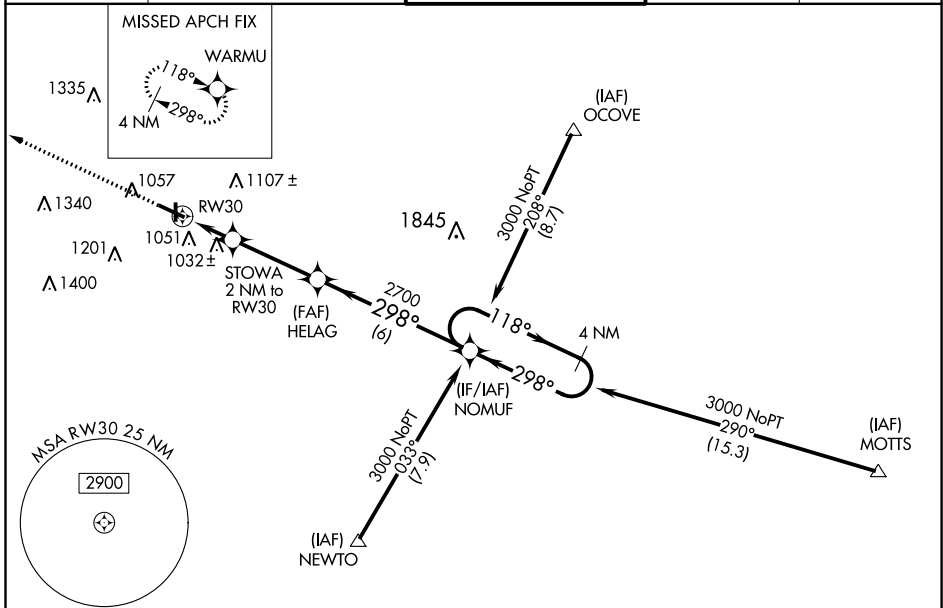
RNP APCH

For uncompensated Baro-VNAV systems, LNAV/VNAV NA below -16°C (4°F) or above 47°C (116°F). When local altimeter setting not received, use Muncie altimeter setting and increase all DA 32 feet and all MDA 40 feet, and increase LPV and LNAV/VNAV all Cats and LNAV Cat C visibility ¼ mile. Inoperative table does not apply.  
Rwy 30 helicopter visibility reduction below ¾ SM NA.



MISSED APPROACH:  
Climb to 3000 direct  
WARMU and hold.

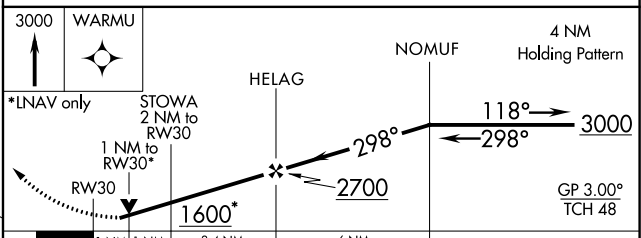
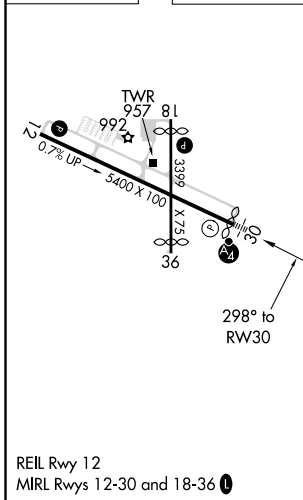
AWOS-3 <b>128.55</b>	INDIANAPOLIS APP CON <b>120.65 317.8</b>	ANDERSON TOWER * <b>126.0</b> (CTAF) <b>0</b>	GND CON <b>121.6</b>	UNICOM <b>122.95</b>
-------------------------	---	--	-------------------------	-------------------------



EC-2, 09 SEP 2021 to 07 OCT 2021

EC-2, 09 SEP 2021 to 07 OCT 2021

ELEV	919	TDZE	919
------	-----	------	-----



CATEGORY	A	B	C	D
LPV DA	1234-1		315 (400-1)	
LNAV/VNAV DA	1367-1½		448 (500-1½)	
LNAV MDA	1300-1		381 (400-1)	
<b>C</b> CIRCLING	1360-1 441 (500-1)	1400-1 481 (500-1)	1520-1¾ 601 (700-1¾)	1300-1¼ 381 (400-1¼)